

is THE
HAIR
TREND
2022 STEP by STEP

**NEXT
TRUST
ONLIFE
FLEXIBLE**



Step by Step
Video

 framesi



Isolate a half-moon shaped section under the fringe.

Color the entire hair with **Framcolor Eclectic 4CVE** (60 g/cc).

Making veil subsections, lighten the isolated section up to level 9 with **Decolor B Diamond**. Apply the product 2 – 3 cm away from the roots.

Tone using the following nuances and apply the colors following the shape of the section:

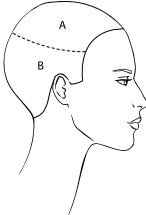
- 1) **Framcolor 2001 Intense 10.66** (20 g/cc) + **Framcolor Pure Pigment Plus /22** (1 g/cc)
- 2) **Framcolor Pure Pigment Plus /00** (20 g/cc) + **Framcolor Pure Pigment Plus /22** (1 g/cc) + **Framcolor Pure Pigment Plus /11** (1 g/cc)
- 3) **Framcolor Pure Pigment Plus /00** (20 g/cc) + **Framcolor Pure Pigment Plus /11** (1 g/cc) + **Framcolor Pure Pigment Plus /3** (3 g/cc)
- 4) **Framcolor 2001 Intense 10.66** (20 g/cc) + **Framcolor Pure Pigment Plus /22** (1 g/cc)



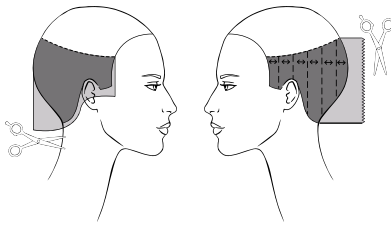
Alternative color proposal

FRAMCOLOR 2001	FRAMCOLOR 2001 INTENSE	FRAMCOLOR GLAMOUR	FRAMCOLOR ECLECTIC CARE	FRAMCOLOR PURE PIGMENT PLUS
4MB + 4.066 (40 + 20 g/cc)	4MB + 4.066 (40 + 20 g/cc)	5.66 + 4.46 (40 + 20 g/cc)	4.26 (60 g/cc)	/64 + /56 (10 + 50 g/cc)

Sectioning

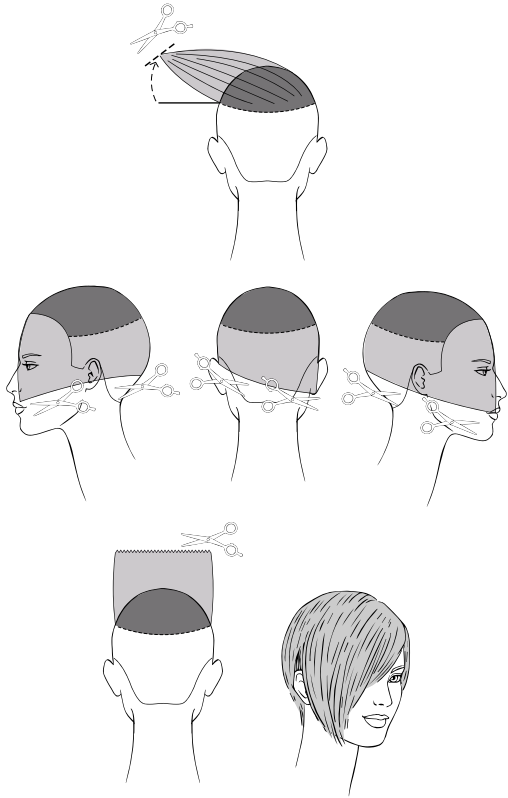


SECTIONS A - B - Section off the crown area.



SECTION B - Following the hairline, define the perimeter of the cut by cutting to the length of 3 - 4 cm.

Make vertical subsections and cut square to the perimeter perpendicularly to growth.



SECTION A - Take a piece of hair at the crown line and cut the guide length to 3/4 of the left ear.

Take the entire section A to the left side and pinch cut vertically to the guide.

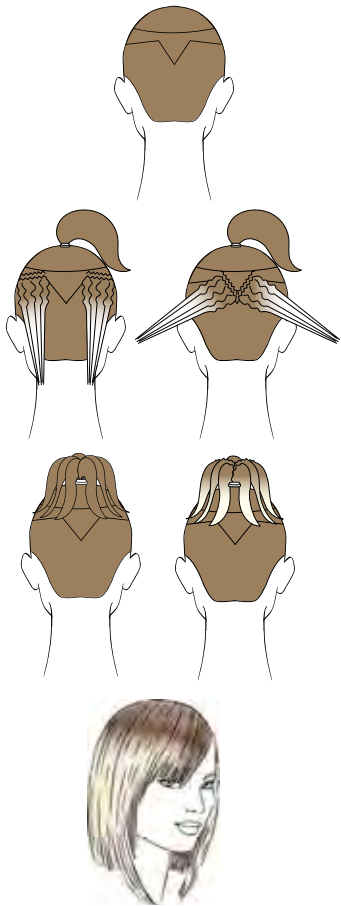
Now, comb the hair in natural fall and cut from the guide length passing below the occiput in the back, below the right ear lobe and below the nose in the front.

Comb the entire section A vertically onto the top of the head and remove any excess with the Square Cut technique.



Apply **For-Me SMOOTH ME SERUM 218** on towel-dry hair and blow-dry using a flat brush without creating any volume.

Apply **For-Me SHINE ME BRIGHTLY SUPER COAT 119**, blow-dry and pass the flat iron for a mirror-shine effect.



Color all the hair with **Framcolor Eclectic 8NE** (60 g/cc).

Isolate the star-shaped section as shown for the cut.

Inside the star, isolate a semicircular section tracing a line from the end of one eyebrow arch to the other passing above the crown line. Make a ponytail in this section.

Along the back and side segments of the star make zigzag partings about 5 mm wide, backcomb 2 cm at the roots and apply **Decolor B Diamond** to lift up to level 10.

Lighten the ponytail with the Ponytail technique: open the ponytail at the center, backcomb at the base and shade with **Decolor B Clay Lightener** from the inside out.

Tone with **Framcolor Eclectic Toner /61** (15 g/cc) + **Framcolor Eclectic 9CT** (15 g/cc).

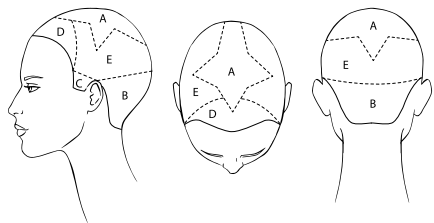


Alternative color proposal

FRAMCOLOR 2001	FRAMCOLOR 2001 INTENSE	FRAMCOLOR GLAMOUR	FRAMCOLOR ECLECTIC TONERS	FRAMCOLOR ECLECTIC CARE	FRAMCOLOR PURE PIGMENT PLUS
8NP (60 g/cc)	8.031 (60 g/cc)	8.36 (60 g/cc)		8 (60 g/cc)	/31 (60 g/cc)
Tone 11A (30 g/cc)	Tone 10.62 (30 g/cc)	Tone 10.62 (30 g/cc)	Tone /61 + /12 (20 + 10 g/cc)	Tone 10.61 (30 g/cc)	Tone /62 (30 g/cc)

Cut

Sectioning



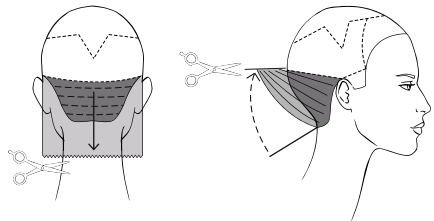
SECTION A - At the center juncture section off a star-shaped section with the points just below the crown line (directions: occipital bone, tip of the ears and 2 cm in front of the vertex).

SECTION B - Trace a line from tip of the ear to tip of the ear passing through the occiput.

SECTIONS C - On both sides, isolate the sideburns by tracing a line from the temple to the tip of the ear.

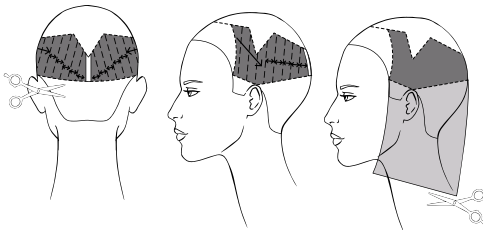
SECTION D - Trace a line from mid front point of the star to the temples.

SECTION E - Isolate the remaining hair.



SECTION B - Make horizontal partings and cut square stationary guide to the base of the neck.

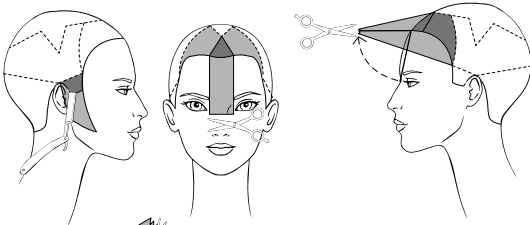
Now, pinch the entire section onto the separation line and cut to the length of the perimeter.



SECTION E - Take a vertical subsection at the center and cut it square to the length found at the occiput.

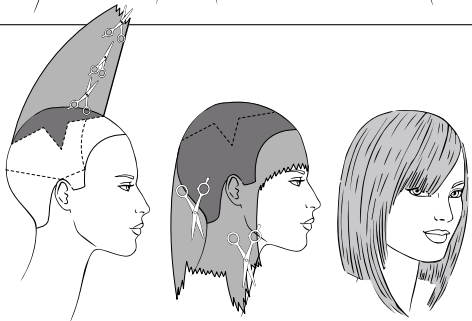
Cut the remaining section making diagonal partings and allowing the guide to travel until you reach the mastoids. From the mastoids to the temples cut stationary guide to the length found at the mastoids themselves.

Comb the hair in natural fall and define the perimeter square from the length at the back toward the chin.



SECTIONS C - Cut the sideburns neatly with the razor from the ear lobe toward the mandible.

SECTION D - Isolate a triangle joining the eyebrow arches and the point of the star and cut the hair to the bridge of the nose. Now pinch the entire section horizontally and point cut to the length of the triangle.



SECTION A - Comb the hair onto the center of the star and cut vertically to the length found at the tip of section D using the Open&Close technique.

Comb the hair in natural fall and refine the perimeter with the Sliding Cut technique while keeping the three points of the star (two on the sides and one in the back) disconnected.

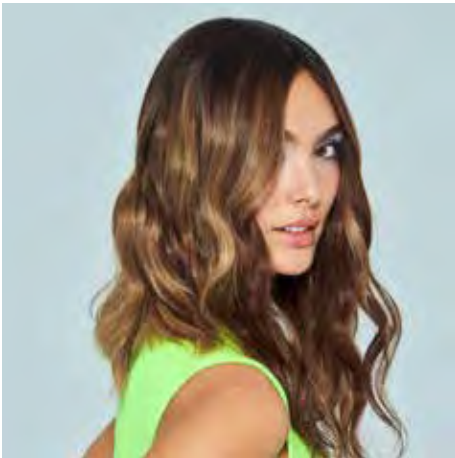
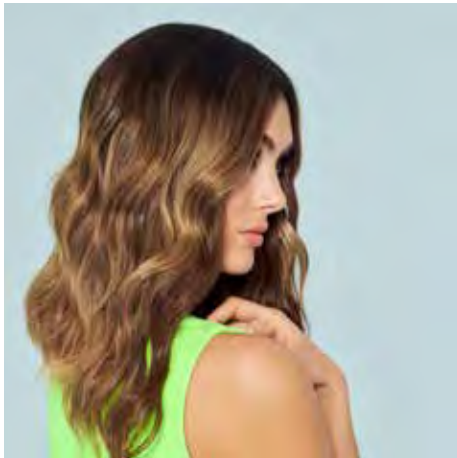


Styling

On towel-dried hair, apply **For-Me PUMP ME UP SPRAY 302** on the roots and **For-Me SMOOTH ME SERUM 218** on the lengths. Blow-dry with a flat brush and create a natural volume.

Hold with **For-Me HOLD&BRUSH ME HAIRSPRAY 406** enhancing the shape of the cut.

Add maximum shine to the color by spraying **For-Me GLOSS ME SPRAY 124**.



Color the base with **Framcolor Eclectic 6-IN** (30 g/cc) + **7SE** (30 g/cc).

From the central parting to the ears, isolate an uneven section and color roots, lengths and ends with **Framcolor Eclectic 6-IN** (20 g/cc).

Lift the remaining hair up to level 8 with **Decolor B Clay Lightener** and the Contouring technique.

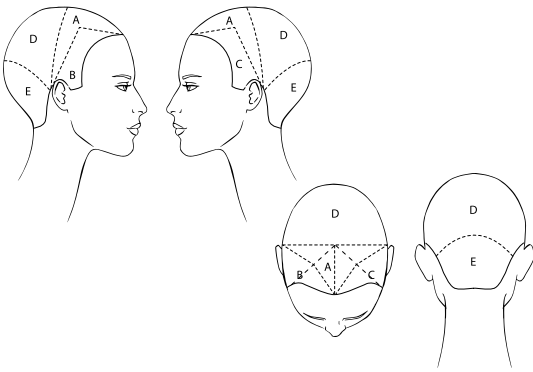
Tone with **Framcolor Eclectic Toner/63** (30 g/cc).



Alternative color proposal

FRAMCOLOR 2001	FRAMCOLOR 2001 INTENSE	FRAMCOLOR GLAMOUR	FRAMCOLOR ECLECTIC TONERS	FRAMCOLOR ECLECTIC CARE	FRAMCOLOR PURE PIGMENT PLUS
Front 6EXN (20 g/cc)	Front 6.024 (20 g/cc)	Front 6.12 (20 g/cc)		Front 6.12 (20 g/cc)	Front /64 (20 g/cc)
Base 7CB (60 g/cc)	Base 7.024 (60 g/cc)	Base 7.64 + 8.12 (30 + 30 g/cc)		Base 7.26 (60 g/cc)	
Tone 8W (30 g/cc)	Tone 9.036 (30 g/cc)	Tone 8.36 (30 g/cc)	Tone /63 (30 g/cc)	Tone 8.363 (30 g/cc)	Tone /31 + /62 (15 + 15 g/cc)

Cut



Sectioning

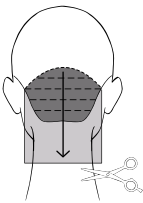
Trace a central line from the forehead to the vertex and a line from mastoid to mastoid passing through the vertex.

SECTIONS A - B - C - Right and left of the central parting, trace a temporary line* from the vertex to the temples.

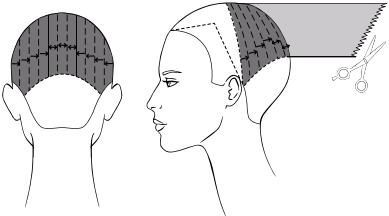
Start from the middle of this parting and trace a line to the center of the forehead and a line to the mastoid.

SECTIONS D - E - Trace a curved line from the bottom of one mastoid to the other passing 2 cm above the occipital bone.

*this line is useful to create a symmetric parting. It will not be a reference for the cut.

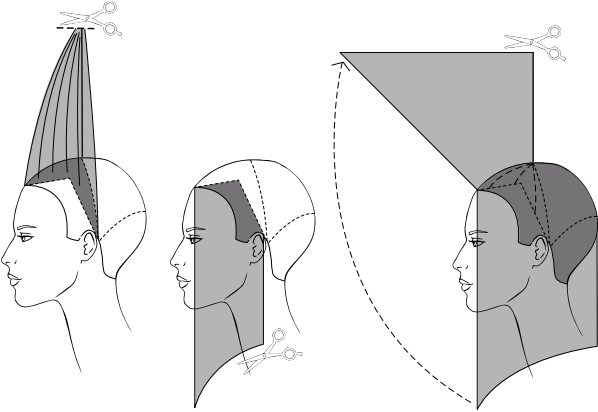


SECTION E - Making horizontal partings, cut the hair square and stationary guide to the length of 15 cm.



SECTION D - Make vertical partings. Cut the three central subsections perpendicularly to growth and medium grade to the length found at the occipital bone.

Continue cutting the remainder subsections stationary guide.



SECTION A - Comb the hair onto the vertex and pinch cut to the length found in section D.

SECTIONS B - C - Comb the hair in natural fall and slide cut round from the back perimeter to maximum length.

Refine the proposal with the Sliding Cut technique connecting section A to maximum length while making radial partings.

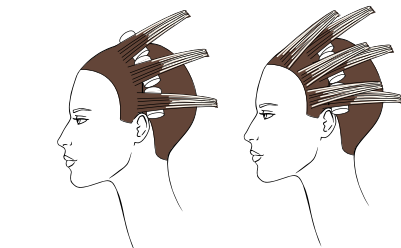
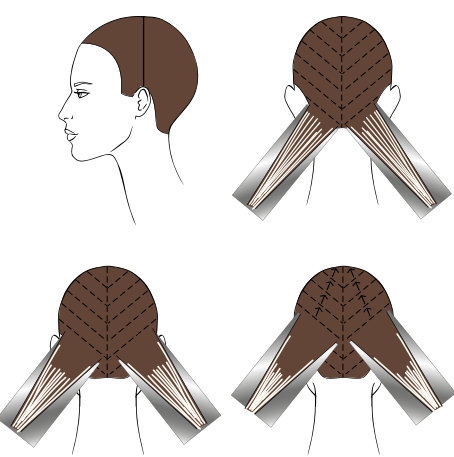
Styling



Towel-dry the hair and apply **For-Me PUMP ME UP SPRAY 302** on the roots and **For-Me SHAPE ME GLAZE 222** on the lengths.

Blow-dry naturally, apply **For-Me MAKE ME WAVY SPRAY 221** and create the waves. Make horizontal partings and alternate a “flat S-shaped wave” and an “ocean wave” (make horizontal partings and alternate a wave to the right and a wave to the left). For a perfect symmetry, use your right hand while working on the left side of the head and vice-versa. Finish with **For-Me HOLD&BRUSH ME HAIRSPRAY 406** and blend the waves using a wide tooth comb.

FLEXIBLE ENERGY
ITALIANSTYLEframesi



Color all the hair with **Framcolor Eclectic 6NE** (60 g/cc).

Trace a line from the vertex to the tip of the ears.

In the back section, lift thin highlights up to level 9 with **Decolor B Diamond** and aluminum foils. Take back diagonal subsections, and cover the pieces close to the hairline with more product, then shade the product lighter and lighter in a V shape as you approach the parting line at the vertex.

In the front section, create some highlights up to level 9 with **Decolor B Diamond** and some rolls. Place the rolls along the separation line. Apply the product 10 cm away from the roots on the pieces at the vertex. As you approach the front hairline, apply the product closer and closer to the roots. Use aluminum foils to lift the front sections.

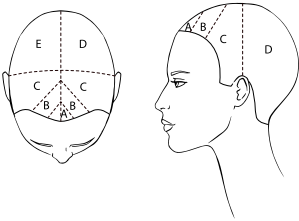
Tone all the hair with **Framcolor Eclectic Toner /63** (40 g/cc) + **/61** (20g/cc).



Alternative color proposal

FRAMCOLOR 2001	FRAMCOLOR 2001 INTENSE	FRAMCOLOR GLAMOUR	FRAMCOLOR ECLECTIC TONERS	FRAMCOLOR ECLECTIC CARE	FRAMCOLOR PURE PIGMENT PLUS
6NP (60 g/cc)	6.031 (60 g/cc)	6.64 (60 g/cc)		6.3 (60 g/cc)	
Tone 9W (60 g/cc)	Tone 9.036 (60 g/cc)	Tone 9.36 (60 g/cc)	Tone /61 + /63 (30 + 30 g/cc)	Tone 8.363 + 10.61 (30 + 30 g/cc)	Tone /31 + /62 (20 + 40 g/cc)

Sectioning

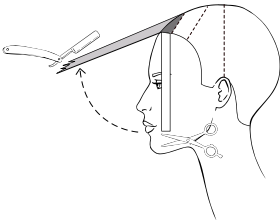


Trace a line from the forehead to the nape of the neck and a line from tip of the ear to tip of the ear passing through the center juncture.

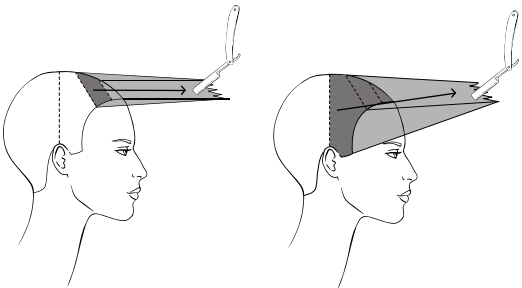
SECTION A - Isolate a front triangle joining the inside of the eyebrow arches and 2 cm in front of the vertex.

SECTIONS B - C - Trace two lines parallel to the sides of section A.

SECTIONS D - E - Isolate the two back sections.

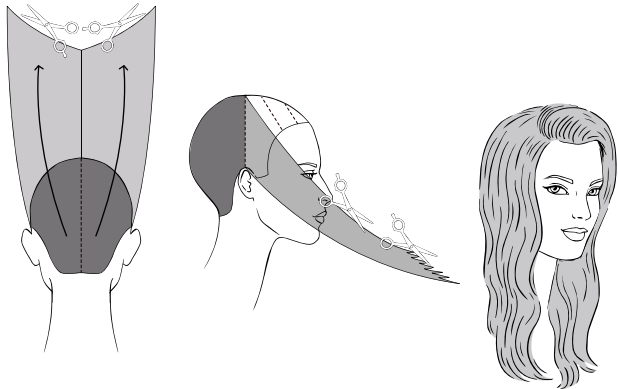


SECTION A - Take a piece of hair at the vertex of the triangle and cut it to the mouth to create the guide length. Now comb the entire section horizontally and, while keeping your fingers vertically, slide with the razor up to 3 cm beyond the guide length.



SECTIONS B - Comb each section onto section A and cut with the razor sliding from the length found at the vertex of the first triangle to maximum length.

SECTIONS C - Comb each section onto section B and cut with the razor, sliding from the length obtained at the top of section B to the maximum length.



SECTIONS D - E - Place each section vertically on the center juncture and connect in Sliding Cut from the length of section C to the maximum length.

Now comb the hair towards the face, passing over the ear, and cut in Sliding Cut from the length obtained in the corresponding front section to the maximum length.

Styling



Towel-dry the hair and apply **For-Me PUMP ME UP SPRAY 302** on the roots and **For-Me GIVE ME BODY MOUSSE 401** on the lengths. Use a large iron, or a round brush, to give volume to the roots and softness to the lengths. Pin the sections while they are cooling down. Spray with **For-Me HOLD&BRUSH ME HAIRSPRAY 406** before removing the pins. Tilt the head downward and gently brush the hair while spraying more **For-Me HOLD&BRUSH ME HAIRSPRAY 406**. Exalt the brightness of the color with **For-Me GLOSS ME SPRAY 124**.

TRANSFORM THE LOOK WITH FOR-ME

proposal #1



NEXT
ENERGY
ITALIANSTYLEframesi

Apply **For-Me SMOOTH ME SERUM 218** on towel-dry hair and blow-dry using a flat brush without creating any volume.
Apply **For-Me KEEP ME 24H WET GEL 412** on thin sections starting from the nape and style as desired.

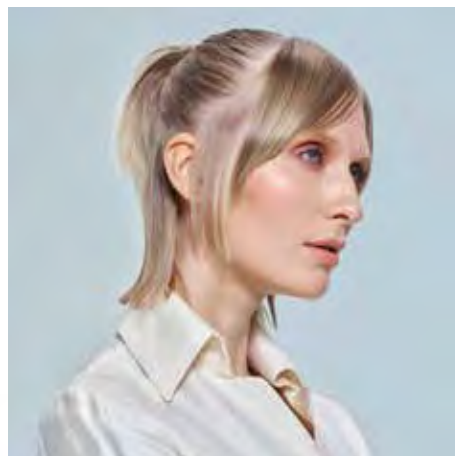
proposal #3



ONLIFE
ENERGY
ITALIANSTYLEframesi

Towel-dry the hair and apply **For-Me DETANGLE ME SPRAY 120** for a better manageability and spray **For-Me PUMP ME UP SPRAY 302** on the roots.
Blow-dry naturally, apply **For-Me MAKE ME WAVY SPRAY 221** and create “ocean waves” using the flat iron: Make horizontal partings and alternate a wave to the right and a wave to the left. Isolate a front triangle joining the temples and the vertex.
With the remaining hair make a ponytail at the center of the nape. Use some extensions to increase the length. Apply **For-Me SHINE ME BRIGHTLY SUPER COAT 119** on the ponytail, blow-dry and use the flat iron for a mirror shine effect.
Hold with **For-Me HOLD&BRUSH ME HAIRSPRAY 406** and blend the waves with a bristle hair brush.

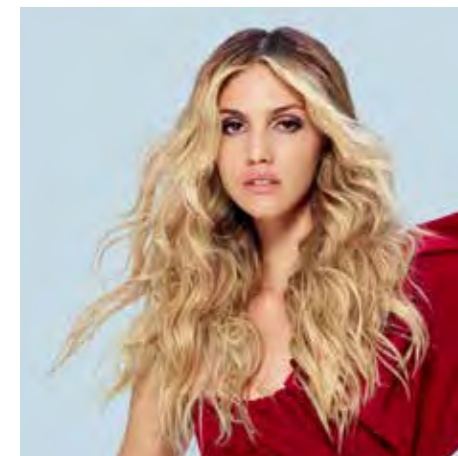
proposal #2



TRUST
ENERGY
ITALIANSTYLEframesi

On towel-dried hair, apply **For-Me PUMP ME UP SPRAY 302** on the roots and **For-Me SHAPE ME GLAZE 222** on the lengths to give texture and body.
Blow-dry with a flat brush.
Following the sectioning of the cut, apply **For-Me KEEP ME 24H WET GEL 412** or **For-ME TWIST&BRAID ME CREAM 225** and create a ponytail.
Define the lengths of the ponytail and refine the entire styling with **For-Me HOLD ME EXTREMELY HAIRSPRAY 607**.

proposal #4



FLEXIBLE
ENERGY
ITALIANSTYLEframesi

Towel-dry the hair and apply **For-Me PUMP ME UP SPRAY 302** on the roots and **Morphosis RE_STRUCTURE LEAVE-IN** on the lengths.
Blow-dry the hair in a natural fashion, apply **For-Me MAKE ME WAVY SPRAY 221** and create some waves with the DNA technique.
For a mat finish, use **For-Me REFRESH ME DRY SHAMPOO 103**, comb and hold with **For-Me HOLD&BRUSH ME HAIRSPRAY 406**.



Color the hair with **Framcolor 2001 Intense 6.035** (30 g/cc) + **4.024** (30 g/cc).

Create some highlights using the **Lighten Up** technique and **Decolor B Clay Lightener**.

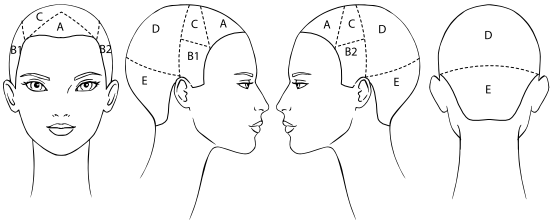
Tone with **Framcolor 2001 Intense 7.035** (30 g/cc).



Alternative color proposal

FRAMCOLOR 2001	FRAMCOLOR GLAMOUR	FRAMCOLOR ECLECTIC	FRAMCOLOR ECLECTIC CARE	FRAMCOLOR ECLECTIC TONERS	FRAMCOLOR PURE PIGMENT PLUS
4DC + 5MC (30 + 30 g/cc)	5.64 (60 g/cc)	5HCE (60 g/cc)	5.25 (60 g/cc)		/64 (60 g/cc)
Tone 7KR (30 g/cc)	Tone 7.33 + 7.26 (20 + 10 g/cc)	Tone 7HCE + 7PE (20 + 10 g/cc)	Tone 7.25 (30 g/cc)	Tone /63 (30 g/cc)	Tone /31 + /62 (20 + 10 g/cc)

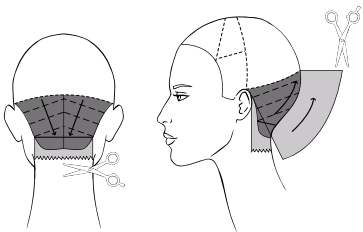
Sectioning



SECTION A - Isolate a front triangle joining a point 2 cm in front of the vertex and the end of the eyebrow arches.

SECTIONS B - C - Trace a line from the vertex to the tip of the ears. On both sides, trace a horizontal line along the crown.

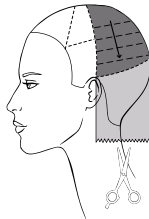
SECTIONS D - E - Trace a line from ear to ear passing above the occiput.



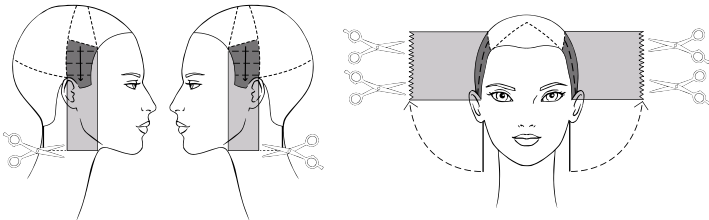
SECTION E - Isolate a 2 cm wide subsection at the nape of the neck and define the perimeter by cutting the hair to 2 cm.

In the remaining section trace a central line and subdivide the two halves with diagonal partings, as shown in the diagram. Point cut the hair square and stationary guide to the length of the perimeter.

Pinch the entire section at the separation line and remove any excess keeping your fingers horizontal and turned palm up.

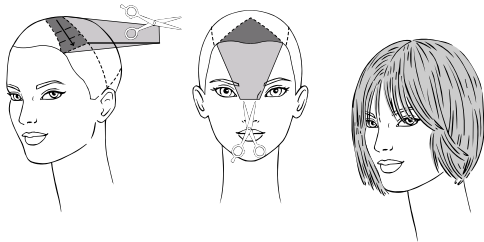


SECTION D - Make horizontal subsections and point cut stationary guide to the length of the perimeter, still keeping your fingers horizontal and turned palm up.



SECTIONS B - Comb the hair in natural fall and pinch cut palm up to the back perimeter.

Now, point cut square to the length of the perimeter while making vertical partings.



SECTION C - Trace a central parting. Make horizontal subsections and connect each one to sections B and D cutting stationary guide.

SECTION A - Pinch the hair horizontally to the bridge of the nose and cut with the Point Cut technique.

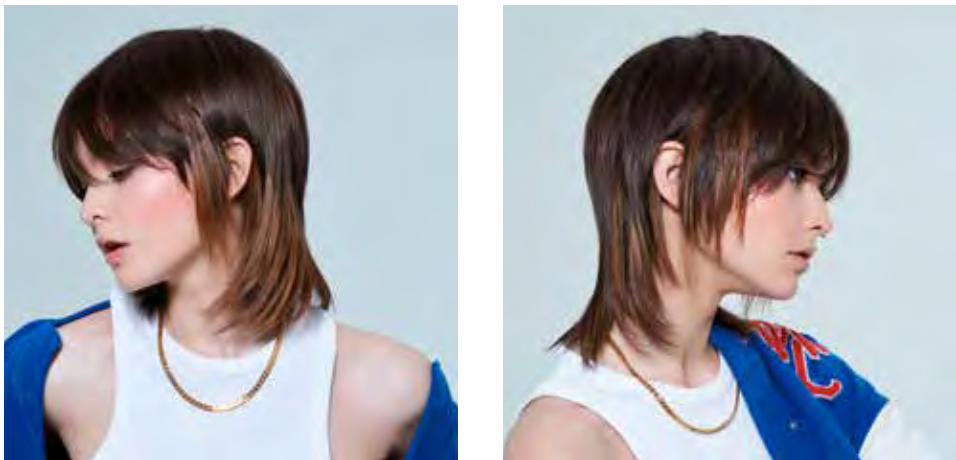
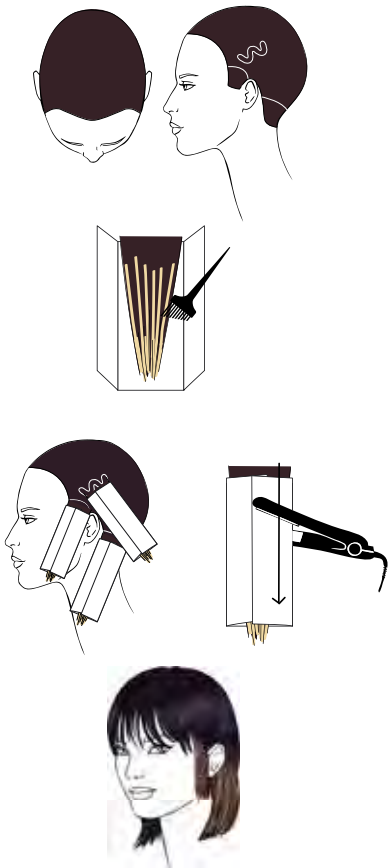


Styling

Apply **For-Me SHAPE ME GLAZE 222** to give the hair the right texture and blow-dry using a flat brush.

Push the front part towards to frame the face.

Refine with the flat iron slightly flipping the ends and fix with **For-Me HOLD&BRUSH ME HAIRSPRAY 406**.



Color the base with **Framcolor Eclectic Care 5.24** (60 g/cc).
Isolate the corners of the nape, the sideburns and a front wavy section as shown in the diagram and create some contrasts using **STRIKE4 XL** and **Framcolor 2001 Color Exalt** (30 g/cc) + **Framcolor Pure Pigment Plus /31 + /64** (15 g/cc + 15 g/cc).



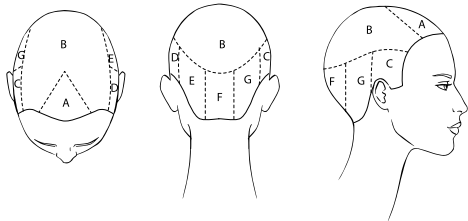
Alternative color proposal

FRAMCOLOR 2001	FRAMCOLOR 2001 INTENSE	FRAMCOLOR GLAMOUR	FRAMCOLOR ECLECTIC	FRAMCOLOR ECLECTIC CARE	FRAMCOLOR ECLECTIC TONERS	FRAMCOLOR PURE PIGMENT PLUS
4DC (60 g/cc)	5.024 (60 g/cc)	5.64 + 6.16 (30 + 30 g/cc)	5HCE + 5SE (30 + 30 g/cc)			/64 (60 g/cc)
Tone 7W + 7P (10 + 20 g/cc)	Tone 8.036 (30 g/cc)	Tone 8.46 + 7.26 (20 + 10 g/cc)	Tone 7HCE + 8PE (20 + 10 g/cc)	Tone 7.3 (30 g/cc)	Tone /63 (30 g/cc)	

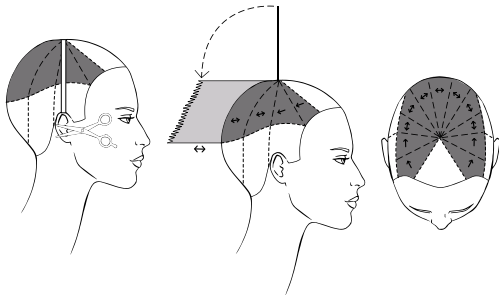
STRIKE4 XL ALTERNATIVE: DECOLOR B AND ALUMINUM FOILS

Cut

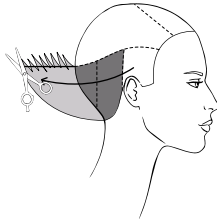
Sectioning



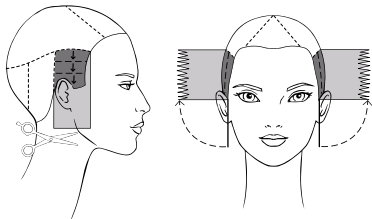
SECTION A - Section off a triangle by joining the vertex and the end of the eyebrow arches.
SECTION B - Trace a line along the crown area and passing through the occiput.
SECTIONS C - D - On both sides, trace a vertical line from the crown to the mastoid.
SECTIONS E - F - G - Subdivide the nape area into three parts by tracing two vertical lines.



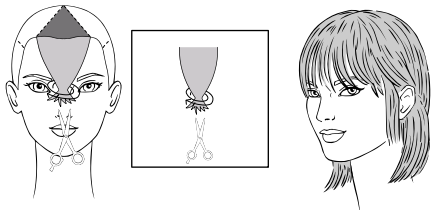
SECTION B - Subdivide the section in radial subsections. Take a piece of hair from the vertex and cut it to the tip of the ear to create a guide. Now, with the guide as a reference, cut each subsection perpendicular to growth and with an inverted diagonal. Cut in this fashion up to the mastoids, then continue cutting stationary guide.



SECTIONS E - F - G - Take each section onto the separation line and pinch cut to the length of section B using the Deep Chipping Cut technique.



SECTIONS C - D - Cut the hair square and stationary guide to the mandible while making horizontal partings.
Now, make vertical partings and point cut using the Chipping Cut technique.

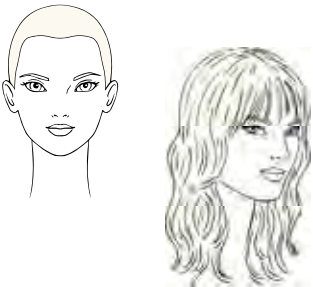


SECTION A - Point cut the hair to the bridge of the nose with the Butterfly technique.

Styling



Apply **For-Me SHINE ME BRIGHTLY SUPER COAT 119** and create a mirror shine straight styling.



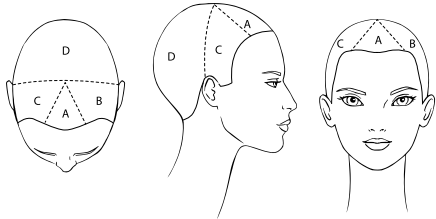
Decolor the entire hair up to level 10 using **Decolor B Cream Plus**.

Tone with **Framcolor 2001 Intense 10.26** (60 g/cc).



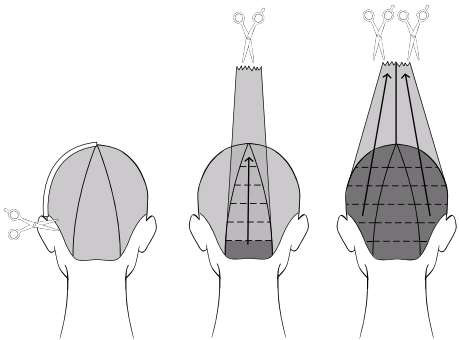
Alternative color proposal

FRAMCOLOR 2001	FRAMCOLOR GLAMOUR	FRAMCOLOR ECLECTIC	FRAMCOLOR ECLECTIC CARE	FRAMCOLOR ECLECTIC TONERS	FRAMCOLOR PURE PIGMENT PLUS
10NP + 11A (30 + 30 g/cc)	10 (60 g/cc)	9CT + /63 Toners (50 + 10 g/cc)	10.61 + 9 (50 + 10 g/cc)	/61 + /63 (40 + 20 g/cc)	/62 + /00 (40 + 20 g/cc)

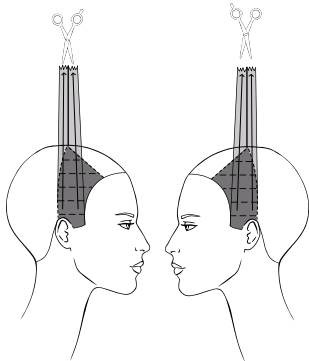


Sectioning

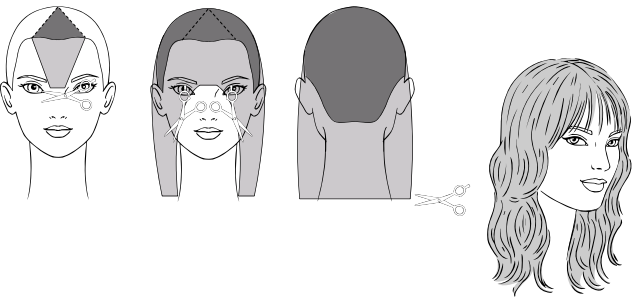
SECTION D - Trace a line from ear to ear passing through the vertex.
SECTIONS A - B - C - Section off a triangle by joining the vertex and the end of the eyebrow arches.



SECTION D - Create a guide at the vertex by cutting a piece to the tip of one ear.
Subdivide the section into three radial subsections.
Now, while making horizontal partings, point cut each subsection stationary guide to the vertex.



SECTIONS B - C - While making horizontal partings, point cut each subsection to the length at the vertex lifting each subsection onto its own perpendicular.



SECTION A - Pinch cut to the bridge of the nose.
Connect section A to the maximum length of sections B and C with the Sliding Cut technique.
Refine the back perimeter square.



Styling

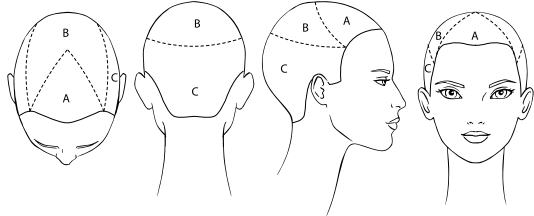
Apply **For-Me SHAPE ME GLAZE 222** on wet hair to add body.
Blow-dry using a flat brush, pushing the frontal part of the hair toward the face and creating volume on the top of the head without any parting.
Now, create the waves using the flat iron and then apply **For-Me REFRESH ME DRY SHAMPOO 103** for a mat look.
Hold the bang with **For-Me HOLD&BRUSH ME HAIRSPRAY 406**.



Color all the hair with **Framcolor Eclectic Care 7.4** (50 g/cc) + **7.3** (10 g/cc).

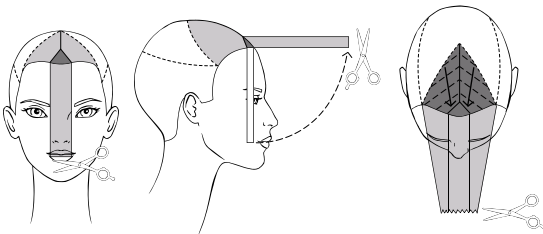
On the entire head create some thin highlights using the **Ray of Light technique** and **Decolor B Clay Lightener**.

Tone with **Framcolor Eclectic 8RDE + 7DE** (30 g/cc + 30 g/cc).

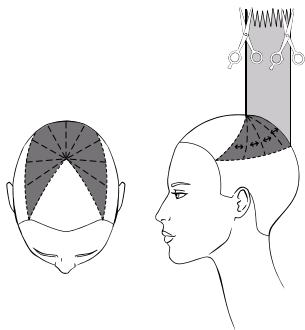


Sectioning

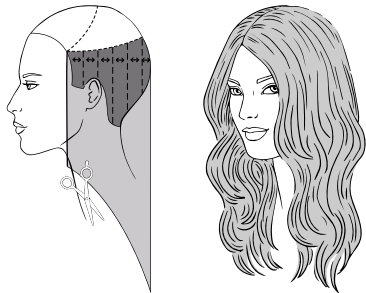
SECTION A - Isolate a triangle with curved sides joining the center juncture and the end of the eyebrow arches.
SECTIONS B - C - Isolate the crown area.



SECTION A - Trace a central parting. Section off a small triangle inside the eyebrow arches and cut to the mouth to create the guide. Now, while making diagonal subsections, cut the two halves of the section stationary guide keeping the hair horizontally.



SECTION B - Make radial partings and cut each subsection vertically and perpendicularly to growth to the length of section A using the Chipping Cut technique.



SECTION C - Make vertical subsections and slide cut perpendicularly to growth to connect section B to maximum length of section C.

Refine the perimeter respecting maximum length.

Alternative color proposal

FRAMCOLOR 2001	FRAMCOLOR 2001 INTENSE	FRAMCOLOR GLAMOUR	FRAMCOLOR ECLECTIC	FRAMCOLOR ECLECTIC CARE	FRAMCOLOR ECLECTIC TONERS	FRAMCOLOR PURE PIGMENT PLUS
7TRP + 7SD (30 + 30 g/cc)	7.044 + 8.031 (40 + 20 g/cc)	7.4 + 7.33 (30 + 30 g/cc)	7RDE + 7DE (30 + 30 g/cc)			
Tone 7TRP + 8SD (30 + 30 g/cc)	Tone 7.044 + 8.031 (30 + 30 g/cc)	Tone 7.4 + 8.33 (30 + 30 g/cc)		Tone 8.4 + 7.3 (30 + 30 g/cc)	Tone /35 + /44 (40 + 20 g/cc)	Tone /31 + /44 (30 + 30 g/cc)

Styling



Apply **For-Me SHAPE ME GLAZE 222** to give the hair body and hold. Blow-dry the hair in natural fall using a flat brush. After drying, apply **For-Me MAKE ME WAVY SPRAY 221** and, using a large iron, create waves as follows: make backward diagonal partings and turn the sections towards the nape while keeping the iron vertically. Now, blend the waves with a brush and define the volume. Brush the fringe towards the face and “open” the hair at the center just using the blow-drier. Hold with **For-Me HOLD&BRUSH ME HAIRSPRAY 406**.

TRANSFORM THE LOOK WITH FOR-ME

proposal #1



TRUST
ITALIANSTYLE  framesi

After blow-drying, isolate the crown area.
Apply **For-Me KEEP ME 24H WET GEL 412** to the lower section and comb through the hair tightly for a neat wet look, bringing the sides behind the ears.
In the crown area, apply **For-Me REFRESH ME DRY SHAMPOO 103** and create rockabilly-style volume towards one side of the forehead.
Fix with **For-Me HOLD ME EXTREMELY HAIRSPRAY 607**.

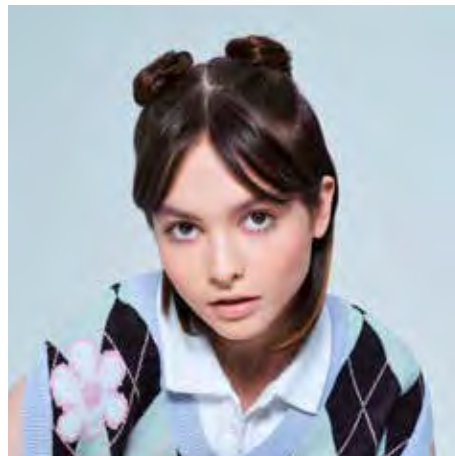
proposal #3



FLEXIBLE
ITALIANSTYLE  framesi

Apply **For-Me SMOOTH ME SERUM 218** and blow-dry the hair straight.
Trace a line from mastoid to mastoid passing through the center juncture and make a ponytail at the center juncture itself. For an ultra-shiny and neat job apply **For-Me GLOSS ME STRONGLY FIBER GUM 416**.
Now, make a bun leaving the ends loose and give them a fan shape.
Fix with **For-Me HOLD ME STRONGLY HAIRSPRAY 504**.

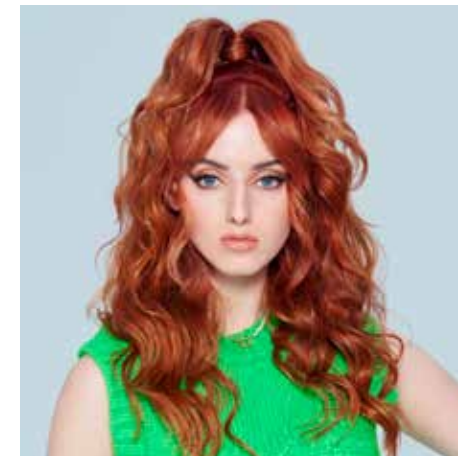
proposal #2



NEXT
ITALIANSTYLE  framesi

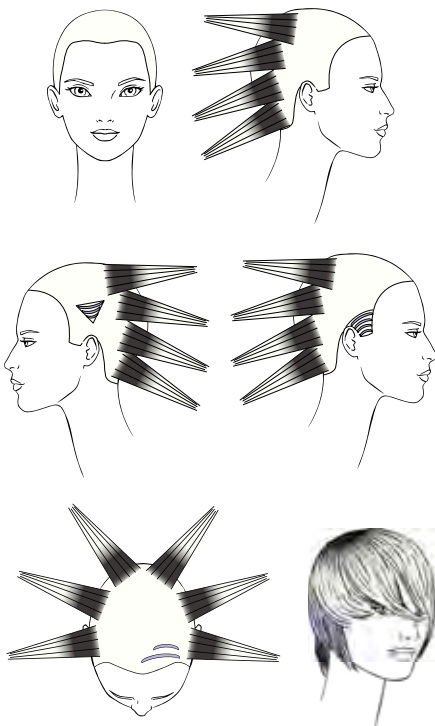
Blow-dry the hair and apply **For-Me GLOSS ME WAX 314**.
On both sides, isolate a small rhomboid section between the crown area and the mastoid.
Make a ponytail first and then a bun.
Finish by spraying **For-Me HOLD ME STRONGLY HAIRSPRAY 504**.

proposal #4



ONLIFE
ITALIANSTYLE  framesi

Apply **For-Me PUMP ME UP SPRAY 302** from roots to ends to give the hair the right texture. Create soft waves using the flat iron.
Now trace a line from mastoid to mastoid passing through the vertex and create a half ponytail at the center juncture, leaving some loose pieces in the front.
Hide the elastic band with a piece of hair and apply **For-Me GLOSS ME SPRAY 124** to make the waves shine.



Decolor all the hair with **Decolor B Cream Plus + Morphosis Re-Structure Pro-Force Bonder 101**.

Color 2 - 3 cm of the roots with **Framcolor Eclectic 5SE** (30 g/cc).

Prepare a mixture of **Framcolor Pure Pigment Plus /00** (40 g/cc) + **/22** (3 g/cc) + **/56** (0,5 g/cc) and tone thin strands positioned as follows:

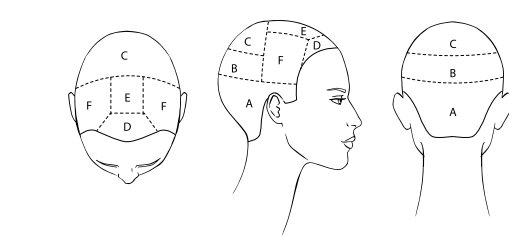
- Right side - Isolate a section between the end of the eyebrow arch and the tip of the ear. Tone 4 thin strands leaving a thin lock between each one.
- Left side - Isolate a V-shaped section 2 cm from the tip of the ear and below the crown area. Inside the section, tone 3 thin strands, leaving a thin lock between each.
- Frontally, tone 1 thin strand between the end of the left eyebrow and the center of the forehead and 1 thin strand equal to the length of the left eyebrow.

Tone the rest of the hair with **Framcolor 2001 Intense 10.21 + 10.26** (15 g/cc + 15 g/cc).

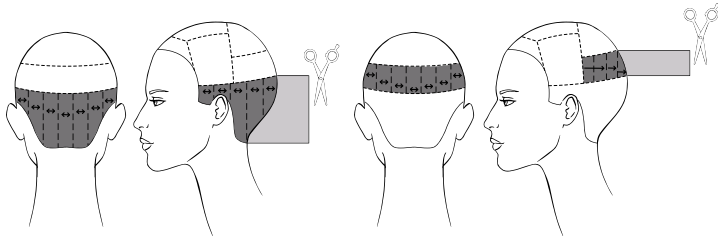


Alternative color proposal

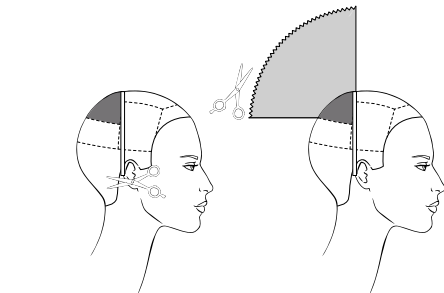
FRAMCOLOR 2001	FRAMCOLOR 2001 INTENSE	FRAMCOLOR GLAMOUR	FRAMCOLOR ECLECTIC	FRAMCOLOR ECLECTIC CARE	FRAMCOLOR ECLECTIC TONERS	FRAMCOLOR PURE PIGMENT PLUS
4CB (30 g/cc)	5.00 (30 g/cc)	5.16 (30 g/cc)		4 + 6.12 (20 + 10 g/cc)		
Lengths 11A + 10NP (20 + 10 g/cc)		Lengths 10.62 + 10 (20 + 10 g/cc)	Lengths 9CT + 9PE (20 + 10 g/cc)	Lengths 10.61 + 8.262 (25 + 5 g/cc)	Lengths /61 + /12 (10 + 20 g/cc)	Lengths /62 (30 g/cc)



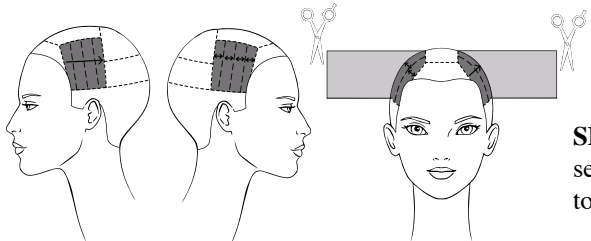
- SECTION A** - Draw a line from temple to temple passing 3 cm above the ears and 2 cm above the occipital notch.
- SECTIONS B - C** - Draw a line from the perimeter center towards the mastoids. Draw a horizontal line over the posterior crown area.
- SECTION D** - Make a 4 cm deep trapezium between the ends and the center of the eyebrows.
- SECTIONS E - F** - Draw two horizontal lines from the corners of the trapezium to the separation of section C.



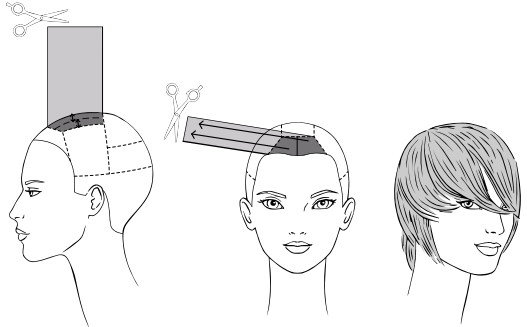
- SECTION A** - Making vertical subsections, cut square and perpendicular to growth starting at a length of 4 - 5 cm on the separation line from section B.
- SECTION B** - Making vertical subsections, cut square to a length 4 cm longer than the measurement obtained in section A. Cut the sections in displacement guide, except the last two which will be cut stationary guide.



SECTION C - Take a guide strand at the center juncture and cut it in the middle of the ear. Making radial subsections, connect the guide strand round, same size obtained in section B.



SECTIONS F - Making vertical subsections, cut square to the size obtained in section B. Cut the left section stationary guide and the right section perpendicular to growth.

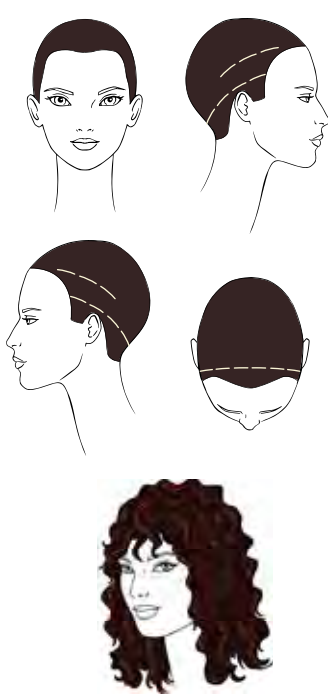


- SECTION E** - Making horizontal subsections, cut square perpendicularly to growth to the length found at the center juncture.
- SECTION D** - Divide with a central line and cut both subsections square and stationary guide to the size of the right F-section, bringing the hair on the right parting line.



Styling

Apply **For-Me SMOOTH ME SERUM 218** on damp hair to give body and softness.
Dry with the flat brush and flat iron in natural fall.
Define the sideburn with **For-Me GLOSS ME WAX 314** and fix the entire hairstyle with **For-Me HOLD&BRUSH ME HAIRSPRAY 406**.



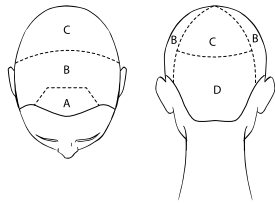
Apply **Framcolor 2001 Intense 4.024** (60 g/cc) to the base.

For a soft and natural lightening effect, as if created by the sun, select a few locks as suggested on the drawing and apply **Decolor B Shimmer**.



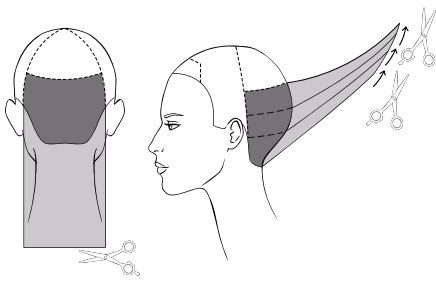
Alternative color proposal

FRAMCOLOR 2001	FRAMCOLOR GLAMOUR	FRAMCOLOR ECLECTIC	FRAMCOLOR ECLECTIC CARE	FRAMCOLOR PURE PIGMENT PLUS
4DC (60 g/cc)	4.64 (60 g/cc)	4-IN (60 g/cc)	5.24 + 4 (30 + 30 g/cc)	/64 (60 g/cc)

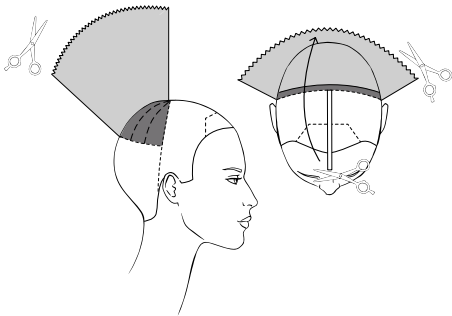


Sectioning

SECTION A - Isolate a 4 cm deep trapezium between the ends and the middle of the eyebrow arches.
SECTIONS B - C - D - Trace a line from the center juncture to the mastoids and draw the back of the crown line.



SECTION D - Comb the hair into a natural fall and cut it square at the shoulder blades.
Now divide the section into 3 horizontal subsections about 4 cm thick and pinch cut each subsection on the top dividing line.



SECTION C - Isolate a rail along the dividing line.
Take a strand from the center juncture and cut it to the bridge of the nose to create the guide. Cut the rail round same size as the guide strand.
Divide the remainder of the section into five subsections and cut each in its center to the length of the rail, maintaining the Round Cutting technique.

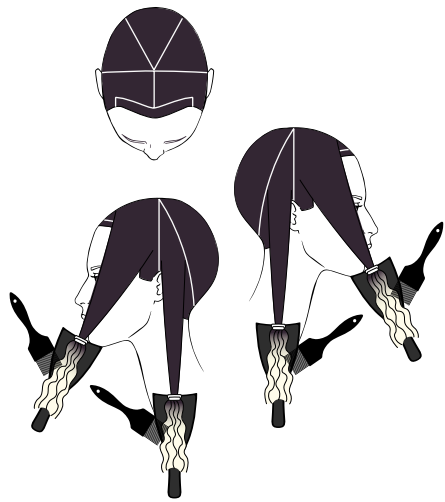


SECTION A - Cut square to the bridge of the nose. Trace a horizontal parting and cut the two subsections square perpendicularly to the dividing line.
SECTION B - Divide the section into six subsections with the following reference points: temples, crown area and center.
Cut each subsection on its own perpendicular, taking the rail of section C as reference.

Styling



Apply **For-Me SHINE ME BRIGHTLY CURL SPRAY 326** on blow-dried hair, saturating it well with the product, and blow-dry with a diffuser.
Spray **For-Me WAKE ME UP CURL SPRAY 227**.



Color the base with **Framcolor 2001 2NP** (60 g/cc).

Isolate a thin fringe between the eyebrow arches.

Isolate five sections making the following partings:

- From ear to ear passing through the vertex
- From the vertex to the forehead
- From the vertex to the corners of the nape

In each section put a hair tie 15 cm away from the ends.

Backcomb the ends and saturate them with **Decolor B No Dust**. To make the application easier lay the hair on a spatula. Wrap the hair with Visible to keep the heat.

Decolor the fringe with **Decolor B No Dust** and aluminum foils.

Rinse and blow-dry. Tone with **Framcolor Extra Charge Gold /3**.



Alternative color proposal

FRAMCOLOR
GLAMOUR

3
(60 g/cc)

FRAMCOLOR
ECLECTIC

3-IN
(60 g/cc)

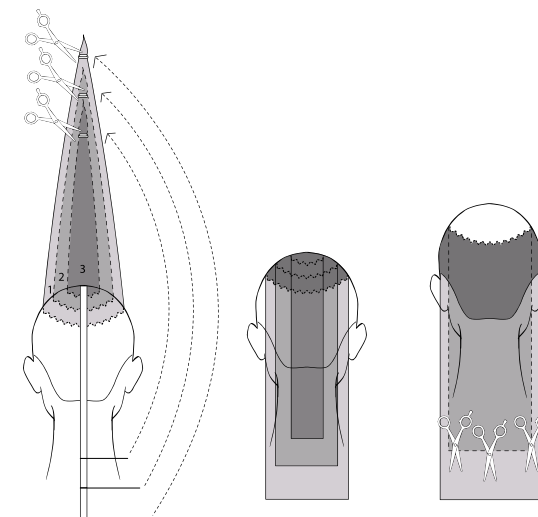
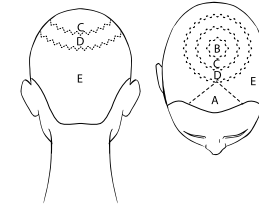
Sectioning

SECTION A - Isolate a triangle between the ends of the eyebrow arches and 2 cm in front of the vertex.

SECTIONS B - C - D - Making zigzag separations, create 3 concentric tails as follows:

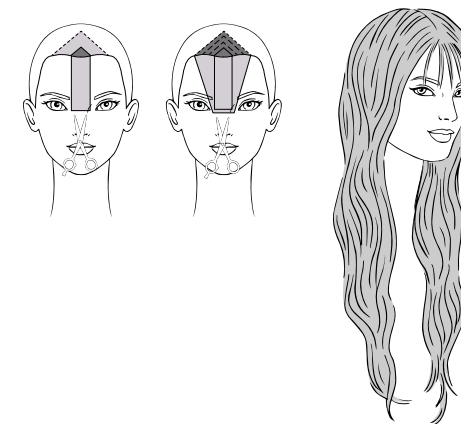
- tail B - behind the vertex, tying it at the point where the strand touches the shoulder
- tail C - at center juncture, tying it at the point where the lock touches the collarbone
- tail D - within the crown area, tying it at the point where the strand touches the shoulder blade.

SECTION E - It consists of the remaining hair mass.



SECTIONS B - C - D - Using the Pinch Cut technique, cut the tails at the point where they are tied, letting them fall one after the other.

SECTION E - Comb the hair in natural fall and connect in Sliding Cut from the length of section D to the maximum length.



SECTION A - In the center of the eyebrows section off a small triangle and point cut at the bridge of the nose to create the guide.

Making diagonal subsections, bring the hair to the bridge of the nose and point cut to a gradually longer length than the guide strand.

Styling



Create a mirror-effect styling with **For-Me SHINE ME BRIGHTLY SUPER COAT 119** and the straightener.

TRANSFORM THE LOOK WITH FOR-ME

proposal #1



ONLIFE
INTERNATIONAL **HAIR**STYLE
framesi

Apply **For-Me GLOSS ME WAX 314** to the damp forelock to give the hair the perfect texture. Dry the sides of the hair by pulling it back, close to the head, without giving it volume and fix with **For-Me HOLD ME EXTREMELY HAIRSPRAY 607**. Dry the top of the head with your hands, creating a natural, slightly crumpled volume. Shape any small strands of “baby hair” with **For-Me GLOSS ME STRONGLY FIBER GUM 416**.

proposal #3



ONLIFE
INTERNATIONAL **HAIR**STYLE
framesi

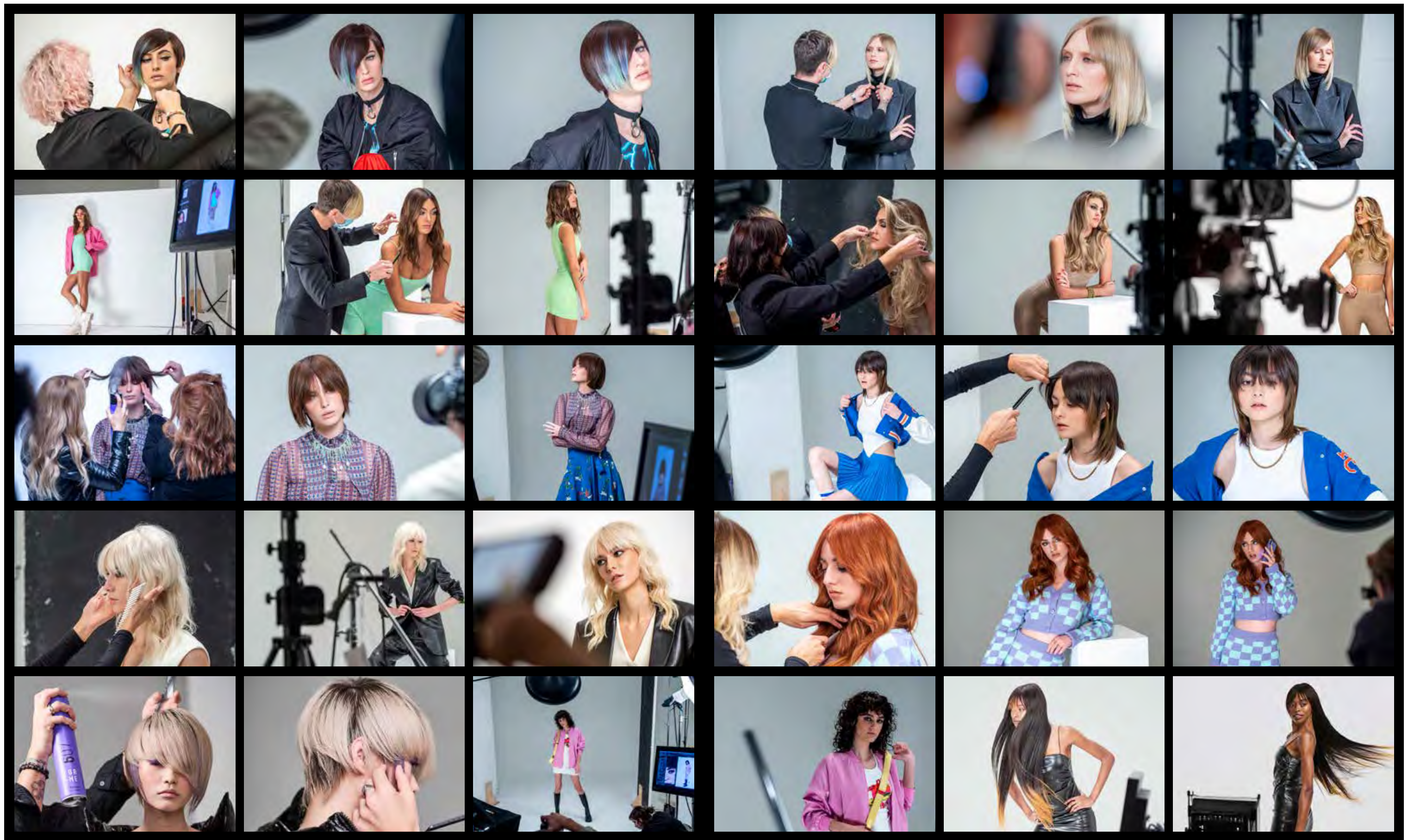
Apply **For-Me PUMP ME UP SPRAY 302** throughout the hair to give volume. Making vertical separations, pass the straightener vertically sliding it towards the back of the head. Spray **For-Me HOLD&BRUSH ME HAIRSPRAY 406**, open the waves with the brush and polish the hair with **For-Me GLOSS ME SPRAY 124**.

proposal #2



ONLIFE
INTERNATIONAL **HAIR**STYLE
framesi

Spray **For-Me BRING ME TO THE BEACH SALT SPRAY 223** on wet hair to give the right texture. Making radial partings, dry the hair using the torchon technique, pushing the strands forward. Blow-dry the locks framing the face by wrapping them backwards. Apply **For-Me SMOOTH ME SERUM 218** to discipline the locks where necessary and fix with **For-Me HOLD ME EXTREMELY HAIRSPRAY 607**.



BACKSTAGE COLLECTION



General Management

Fabio Franchina, Patrizia Caldera

Social-Economical Analysis

C.I.M.F. Coordinamento

Informazioni di Mercato Framesi

Framesi Research Center

**Viviana Ciampitti, Francesca D'Ambrosio,
Rocco Settino, Daniele Carroli**

Medical-Scientific Aspects

Ivano Sironi

Copywriters

Ilaria Pizzoferrato, Patrizia Annovazzi

Art Directors & Fashion Consultants

Ilaria Pizzoferrato, Paolo Lungo

Makeup Artists

Silvia Dell'Orto, Giuseppe Giarratana

Head Master Technician

Armando Petracci

Italian Style Artistic Directors

Sabrina Arvizzigno, Daniele Pavarani

Hair Stylists Italian Style Energy

**Sandra Bucalossi, Alice Carrai,
Enrico Dal Forno, Pino Di Tella,
Rita Montanari, Barbara Narcisi,
Monica Odorizzi, Sara Peli,
Giuseppe Spina, Nicola Valzania**

Hair Stylists Italian Style Framesi

**Virginia Bianconi, Gino Curci, Michele Curci,
Ignazio D'Oca, Angelo Di Paola,
Carmen La Rosa, Francesco Monica,
Marina Monitillo, Fabio Mutti,
Davis Pozzobon, Elena Petrini, Laura Rivaldi,
Davide Rosatti, Michele Troia**

Hair Stylists Italian Style International

Davide Cichello, Gigi Guerretta

Hair Stylists Italian Style USA

**Robb Bruce, Gioia Gomez, Maria Heckscher,
Anthony Jefferson, Xena Parsons, Joy Williams**

International Master Technicians

**Marco Barbaresi, Eugene Cheong,
Billy Dogan, Kenza Lum, Natasha Maconi,
Jiro Okabe, Ezequiel Perata, Marcus Schacher,
Leonardo Trigueros, Sally Ward**

