

5D | FRAMCOLOR Eclectic
COLOR GLOSS

LIQUID DEMI-PERMANENT HAIRCOLOR

Better Results
BETTER BEAUTY



BETTER BEAUTY

EMPOWER • RESPECT • EVOLVE

BETTER PERFORMANCE

Easy to formulate, **easy** to apply, **quick** to process.
Works on all hair types and textures.

BETTER FORMULATION

Hair-loving formulation. Sustainable quality ingredients.
Made in Italy. Healthier hair = loyal clients!

BETTER SERVICES

Modern, versatile palette. Achieve gray/white blending,
lived-in blonde, color melts, and more.

BETTER RESULTS

Reliable, predictable, long-lasting results.
Unbelievable shine & conditioning.



FROM NOW ON COLOR HAS

Five Dimensions

"A LIQUID THAT
PERFORMS LIKE
A CREAM!"



Brightness

Achieve **vibrant, radiant** hair that **shines** from within.



Protection

Shield your hair from damage and environmental stressors.



Hydration

Keep your hair **moisturized** and looking its **best**.



Health

Say no to harmful chemicals and **yes** to **healthy hair**.



Repair

Restore your hair's **vitality** and **strength**.

5D COLOR PALETTE

5D FRAMCOLOR Edlectic
COLOR GLOSS

EASY TO FORMULATE, EASY TO MIX, QUICK TO PROCESS

LEVEL	Natural (blue-violet)	Natural Warm (blue-red-yellow)	Platinum Gold (yellow-green)	Golden Copper (yellow-orange)	Hazelnut (yellow-red)	Sandy Beige (yellow-violet)	Red Violet (red-violet)	Hot Chocolate (violet-orange)	Violet (violet)	Blue Ash (blue-green)
10 YELLOW WHITE REMAINING COLOR	10N/10.0 Platinum Blonde		10PG/10.31 Platinum Ash Golden Blonde	10GC/10.34 Platinum Golden Copper Blonde		10SB/10.36 Platinum Sandy Blonde		10HC/10.64 Platinum Chocolate Blonde	10V/10.6 Platinum Pearl Blonde	10BA/10.21 Platinum Ash Blonde
9 YELLOW REMAINING COLOR	9N/9.0 Very Light Blonde	9NW/9.03 Very Light Natural Warm Blonde			9H/9.35 Very Light Hazelnut Blonde	9SB/9.36 Very Light Sandy Blonde		9HC/9.64 Very Light Chocolate Blonde	9V/9.6 Very Light Pearl Blonde	9BA/9.21 Very Light Ash Blonde
8 YELLOW ORANGE REMAINING COLOR	8N/8.0 Light Blonde			8GC/8.34 Light Golden Copper Blonde				8HC/8.64 Light Chocolate Blonde		8BA/8.21 Light Ash Blonde
7 ORANGE REMAINING COLOR	7N/7.0 Medium Blonde							7HC/7.64 Medium Chocolate Blonde		7BA/7.21 Medium Ash Blonde
6 RED ORANGE REMAINING COLOR	6N/6.0 Dark Blonde			6GC/6.34 Dark Golden Copper Blonde			6RV/6.56 Dark Red Violet Blonde	6HC/6.64 Dark Chocolate Blonde		6BA/6.21 Dark Ash Blonde
5 RED REMAINING COLOR	5N/5.0 Light Chestnut							5HC/5.64 Light Chocolate Chestnut		5BA/5.21 Light Ash Chestnut
4 RED VIOLET REMAINING COLOR	4N/4.0 Medium Chestnut							/00 CLEAR	4V/4.6 Medium Violet Chestnut	4BA/4.21 Medium Ash Chestnut

For professional use only. Review and adhere to all warnings on product packaging before use. Can cause an allergic reaction, patch test before use. Strand test before use.

BETTER PERFORMANCE

**EASY TO FORMULATE,
EASY TO MIX, QUICK TO PROCESS**

THE 5D NUMBERING SYSTEM

The system is based on a combination of numbers separated by a decimal point.

The number **before the decimal point** (9.64) indicates the level of depth for the shade. The number **after the decimal point** (9.64) indicates the primary tone direction. The **second number after the decimal point** would indicate the secondary, minor tone (9.64).

Level of Depth Tone Direction

9.64

- .0 NEUTRAL
- .1 GREEN
- .2 BLUE
- .3 YELLOW
- .4 ORANGE
- .5 RED
- .6 VIOLET

formulated with an
**EASY 1:1
MIXING RATIO**
for all shades

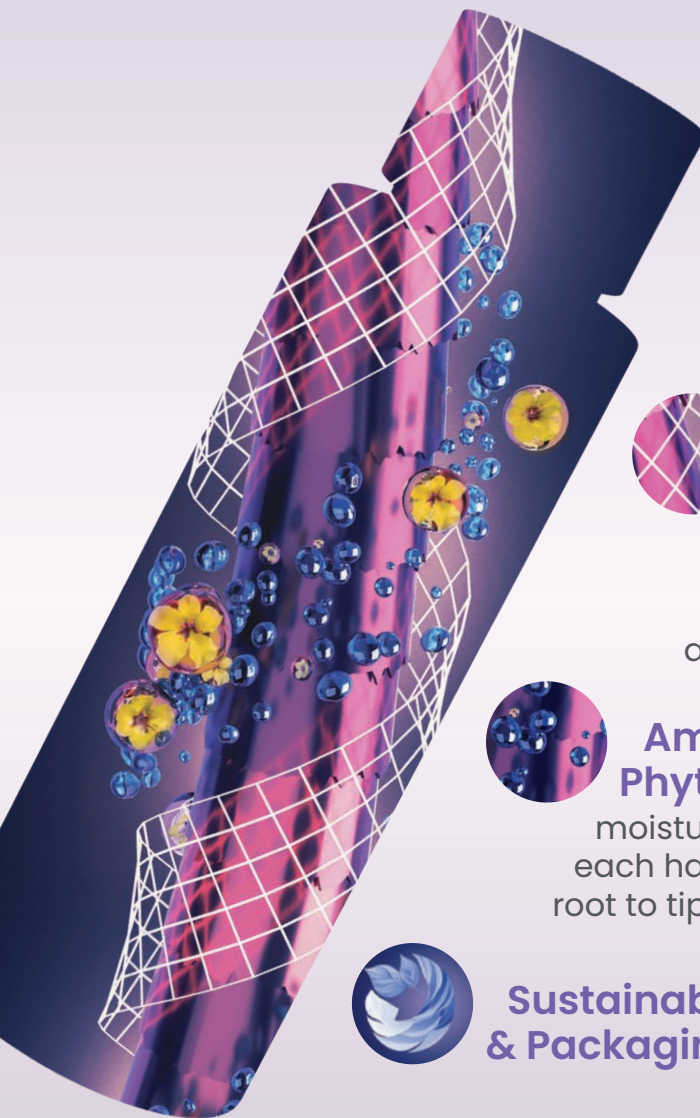
**5-20
MINUTE
Processing
Time**

LIQUID-CREAM ACTIVATOR

transforms our liquid color into a cream consistency that ensures **a precise, easy, and fast application**

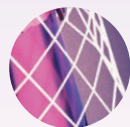
- Shine
- Protection
- Longevity
- Vibrancy

BETTER FORMULATION



Mullein Flower Extract

conditions and seals color, leaving behind hair that is richer, healthier, and shinier.



Biodegradable Chelating Agent

neutralizes the impact of hard/well water, allowing for consistent, predictable, and long-lasting results.



Amino Acids + Phyto (Plant) Complex

moisturize and strengthen each hair fiber for even results, root to tip.



Sustainable Formulation & Packaging



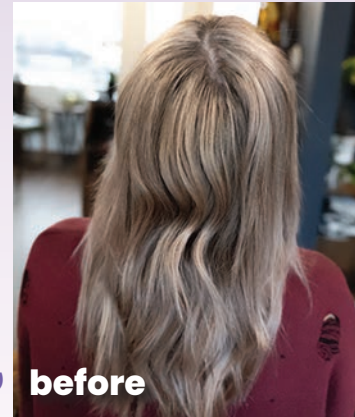
VEGAN • GLUTEN FREE • AMMONIA FREE • RESORCINOL FREE • PPD FREE • SUSTAINABLE

BETTER SERVICES

Create looks that **Empower** your Clients to **Feel Amazing!**



@scacciahair



@scacciahair



Join our **5D community** access formulas, tips, tricks & share your amazing results!

Available Services

- Gray/White Blending
- Lived-In Blonde
- Color Melt
- Glaze/Toner
- Root Tap/Shadow Root
- Shine Gloss Boost
- End Refresh



Technical Assistance 1.800.245.6323

QUICK and EASY MIXING INSTRUCTIONS

formulated with an
**EASY 1:1
MIXING RATIO**
for all shades



STEP 1 *Mix*

MIX FRAMCOLOR Eclectic 5D COLOR GLOSS
in a 1:1 ratio with FRAMCOLOR Eclectic 5D
COLOR GLOSS ACTIVATOR.



5-20
MINUTE
*Processing
Time*

STEP 2 *Apply*

Note: The texture of the mixture allows application
to wet or dry hair. For a more intense result apply
to dry hair. Once applied, allow 5 minutes for
flash toning results or 20 minutes for maximum
intensity of the color.



STEP 3 *Rinse*

Note: If using FRAMCOLOR Eclectic 5D COLOR
GLOSS to refresh faded ends after a permanent
haircolor service, rinse hair and follow with
FRAMESI COLOR METHOD SHAMPOO GO and
POST COLOR MASK before styling.



Quick How-To Video
mixing, measuring
& application

framesiprofessional.com

LIQUID-CREAM

Activator

LIQUID-CREAM ACTIVATOR

transforms our liquid
color into a cream
consistency that ensures
**a precise, easy, and
fast application**



Note: For best results, FRAMCOLOR Eclectic 5D COLOR GLOSS **should be mixed with its dedicated activator.**

Shine -
Protection -
Longevity -
Vibrancy -



FAQ

What Makes 5D Better than Other Liquid Color Lines?

No suds, easy to rinse, easy to spread, will not go dark or muddy, root-to-end deposit, even results, true to swatch. **A hair-loving formulation for the shiniest, most conditioned, long-lasting results.** What you see on the swatch is what you'll get on the hair + more!

Do I Have to Add Clear to Dilute My Formulas?

Nope! Our shades are balanced and true to swatch. We advise using clear for **extended glossing treatments** and/or for your over-processed, porous, damaged hair clients.



5D | FRAMCOLOR Eclectic COLOR GLOSS

LIQUID DEMI-PERMANENT HAIRCOLOR

Trendy FORMULAS



CREAMY
PEARL

1 1/3 oz. 10SB Platinum
Sandy Blonde

2/3 oz. 10V Platinum
Pearl Blonde

2 oz. 5D COLOR
GLOSS Activator

+WARMER +BRIGHTER +COOLER



CHESTNUT
PRALINE

1 1/3 oz. 5N Light
Chestnut

2/3 oz. 5HC Light
Chocolate Chestnut

2 oz. 5D COLOR
GLOSS Activator

+WARMER



ALMOND
TRUFFLE

1 1/3 oz. 8N
Light Blonde

2/3 oz. 9HC Very Light
Chocolate Blonde

2 oz. 5D COLOR
GLOSS Activator

+WARMER +BRIGHTER +COOLER



MOCHA
MOUSSE

1 1/3 oz. 8HC Light
Chocolate Blonde

2/3 oz. 7N
Medium Blonde

2 oz. 5D COLOR
GLOSS Activator

+WARMER +COOLER



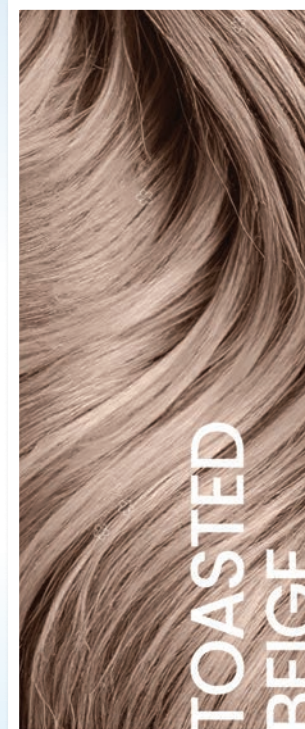
HAZELNUT
ATTITUDE

1 1/3 oz. 6HC Dark
Chocolate Blonde

2/3 oz. 9H Very Light
Hazelnut Blonde

2 oz. 5D COLOR
GLOSS Activator

+WARMER +COOLER



TOASTED
BEIGE


1 1/3 oz. 8HC Light
Chocolate Blonde


2/3 oz. 9SB Very Light
Sandy Blonde


2 oz. 5D COLOR
GLOSS Activator


+WARMER +COOLER




 framesipro morphosisbyframesi

 framesipro morphosisbyframesi

 FramesiUSA

 FramesiNorthAmerica

 framesiprofessional.com

 **framesi**[®]
MILAN

SCAN **HERE FOR**



Quick How-To Video
mixing, measuring
& application



Join our 5D community
access formulas, tips,
tricks & share your
amazing results!

follow us @framesipro

© 2025 framesi North America
17 Avenue A
Leetsdale, PA 15056
framesi Technical Assistance
1.800.245.6323
900916-003