

is THE HAIR TREND

2025 **STEP by STEP**



Heritage

HYBRID

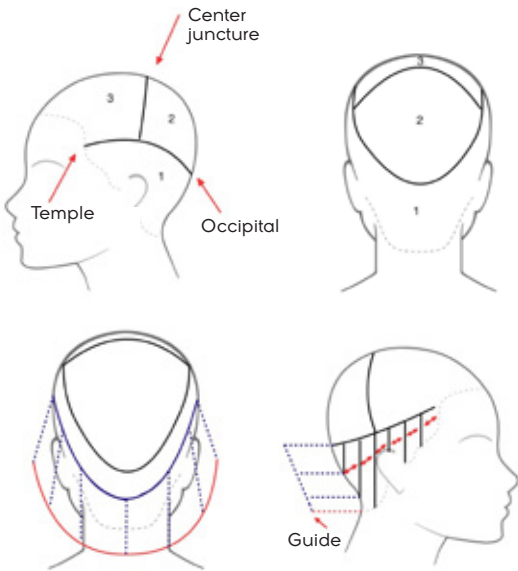
Pleasure

proposal #1
Copper Ginger
Brown

Pleasure
ENERGY
ITALIANSTYLEframesi

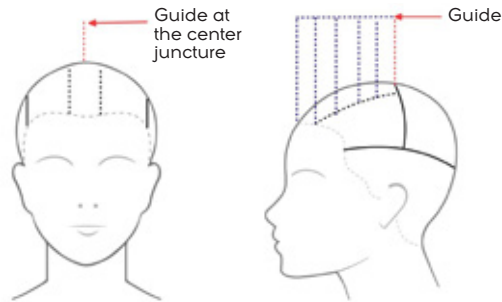


Cut



SECTION 1
Create a round perimeter 3 cm (1¼ in) long).
Make vertical partings, held perpendicular to growth,
and cut in medium grade.

SECTION 2
Trace the crown line to divide the section into two parts.
Make vertical partings, held perpendicular to growth
and cut medium grade.



SECTION 3
Create a square central guide section, cutting a small
guide to the length found at the center juncture.

On both sides, trace a diagonal line from guideline just
created, to the temple, creating two subsections.
Cut the upper subsection to the central guide you just
created in the previous step. Cut the lower subsection to
the length obtained in Section 2.

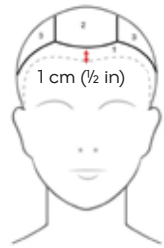


Comb the entire Section 3 in natural fall, make some
twists and lighten them with the razor, cutting long and
short pieces next to each other 2 cm (¾ in) difference.

Make a cross parting, ear to ear through the vertex.
In each of the four sections you obtain, make diagonal
partings and cut using the Advanced Energy Cut
technique and the Butterfly Twist technique.

Advanced Energy Cut technique with Butterfly Twist
Section off pieces as you would make for highlights.
Twist once the section you obtain and cut palm up.

Color



Color the roots with **Framcolor Glamour 7.34** (25 g/cc)
+ **7.46** (25 g/cc).

SECTION 1
Isolate from the front hairline to the mastoids
and color lengths and ends with **Framcolor Glamour**
7.34 (25 g/cc) + **7.46** (25 g/cc).

SECTION 2
On top of the head section off a rectangle between the
end of the eyebrow arches and the vertex.
Using the Air Touch technique and **Decolor B**
Diamond, lift the last 5 cm (2 in) up to level 9.

SECTION 3
Color the lengths with **Framcolor Glamour 9.36** (20 g/cc)
+ **8.4** (10 g/cc) + **8.46** (10 g/cc) blending with the color on
the roots.

Tone the remaining hair with **Framcolor Glamour 9.36**
(10 g/cc) + **8.4** (5 g/cc) + **8.46** (5 g/cc).



Alternative color proposal

FRAMCOLOR 2001/INTENSE	FRAMCOLOR ECLECTIC/ECLECTIC CARE	FRAMCOLOR FUTURA
7.046 + 7.044 + 7P (30 + 10 + 20 g/cc)	7HCE + 7RDE + 7PE (20 + 10 + 20 g/cc)	7XN + 7TR + 7N (30 + 10 + 10 g/cc)
8.046 + 8.044 + 8P (30 + 10 + 20 g/cc)	8HCE + 8RDE + 8PE (20 + 10 + 20 g/cc)	8XN + 8TR + 8N (30 + 10 + 20 g/cc)
Tone 10.62 + 9TRP + 9SD (10 + 10 + 10 g/cc)	Tone 0E + 8RDE + 9DE (10 + 10 + 10 g/cc)	Tone 10N + 9TR + 9D (10 + 10 + 10 g/cc)



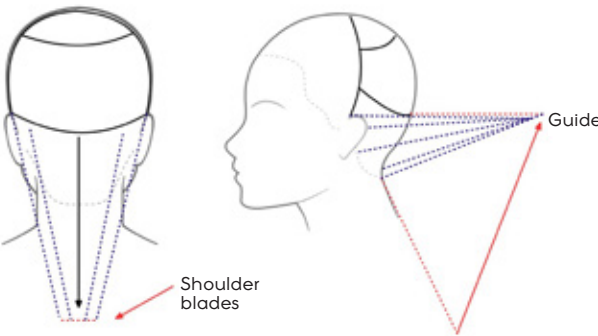
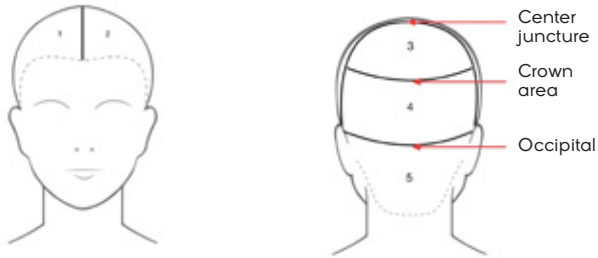
Styling

Apply **FOR-ME Bring Me To The Beach Salt Spray 223** or **BY Sparkling Mousse Strong** on damp hair
and dry using the diffuser.
Use a narrow iron to create waves and curls next to each other.
Fix with **FRAMESI COLOR LOVER Design Fix & Flex Hairspray** or **BY Mist Hair Spray Light**.

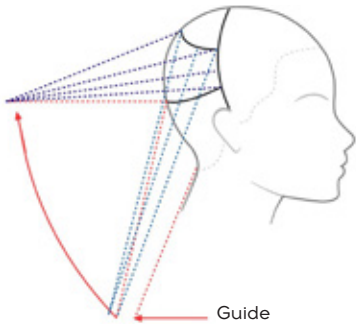
proposal #2
Rich Chocolate



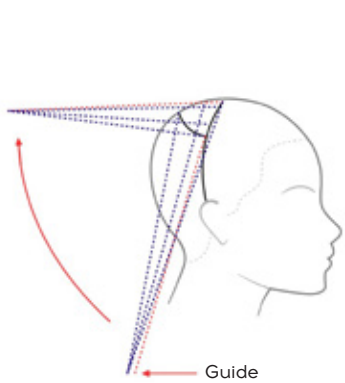
Cut



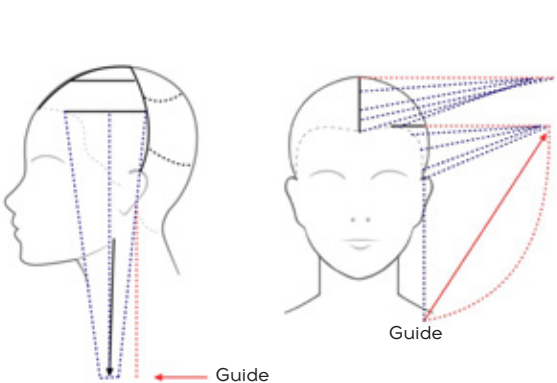
SECTION 5
Pinch Cut the entire section at the shoulder blades. Now pinch and point cut the entire section on the separation line at the occipital.



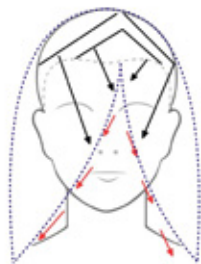
SECTION 4
Pinch and point cut the section with the same reference points (shoulder blades, then occipital).



SECTION 3
Pinch and cut the section as before, now using shoulder blades and crown line as guides.



SECTIONS 1 - 2
Subdivide both sections into two parts and pinch and cut as before, in the three back sections. Comb the entire hair vertically and point cut to texture and remove excess bulk.

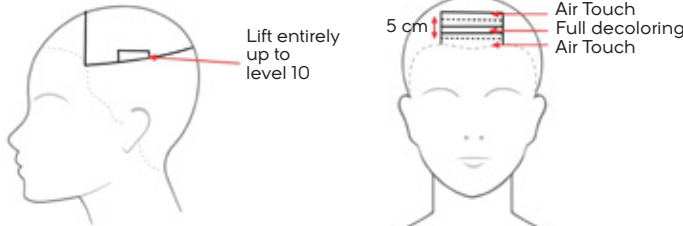


Comb the hair onto the face and use thinning shears using the Open&Close technique.

Color



Color the entire hair with **Framcolor Glamour 4.46** (30 g/cc) + **4.64** (30 g/cc) + **2** (15 g/cc). Rinse, dry and use the flat iron. Below the crown area create highlights, lifted to a level 8 with **Decolor B Diamond** and the Air Touch technique.



On both sides, isolate a section as in the diagram and lift the hair up to level 10.

Isolate a section in the front, as shown in the diagram, and alternate highlights with the Air Touch technique and full decolored pieces.



Subdivide the remaining top section into three parts. Backcomb the hair and use the Free Hand technique to lighten the last 10 cm (4 in).

Tone the entirely lifted sections with **Framcolor Glamour 10** (20 g/cc) + **9.36** (5 g/cc). Tone the remaining hair with **Framcolor Glamour 9.4** (20 g/cc) + **7.64** (10 g/cc) + **8.46** (20 g/cc).



Alternative color proposal

FRAMCOLOR 2001/INTENSE	FRAMCOLOR ECLECTIC/ECLECTIC CARE	FRAMCOLOR FUTURA
4.024 + 6.046 + 2NP (40 + 20 + 2 g/cc)	4.25 + 5HCE + 1BB (40 + 20 + 2 g/cc)	4N + 6XN + 2N (40 + 20 + 2 g/cc)
10.00 + 9SB (20 + 5 g/cc)	0E + 9HCE (20 + 5 g/cc)	10N (25 g/cc)
Tone 9TRP + 8.024 + 8.046 (20 + 10 + 20 g/cc)	Tone 0E + 8RDE + 8HCE (10 + 10 + 20 g/cc)	Tone 9TR + 8XN (20 + 30 g/cc)



Styling

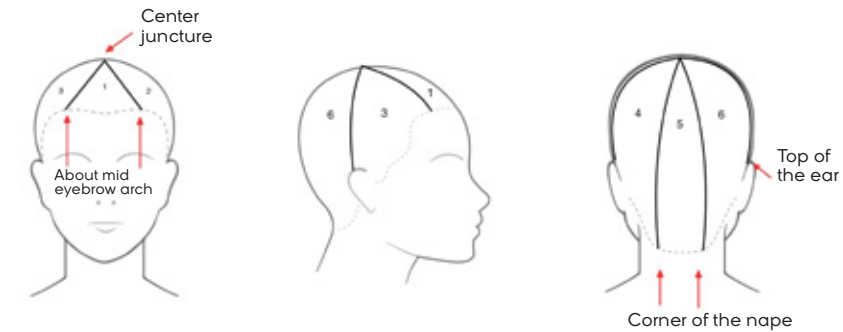
Apply **FOR-ME 401 Shape Me Glaze** on damp hair. Dry wrapping the hair vertically with a round brush. Add shine with **MORPHOSIS Sublimis Oil Pure** and fix with **FRAMESI COLOR LOVER Design Fix & Flex Hairspray** or **BY Mist Hair Spray Light**.

Wet finish
Saturate the hair with **FRAMESI COLOR LOVER Primer 11**. Apply **BY Sparkling Mousse Strong** to the hair. Apply **BY Hydro Gel Strong** or **FOR-ME Define Me Gel 411** on the sideburns, front pieces and baby hair. Fix with **BY Mist Hair Spray Strong**.

proposal #3
Radiant Pearl



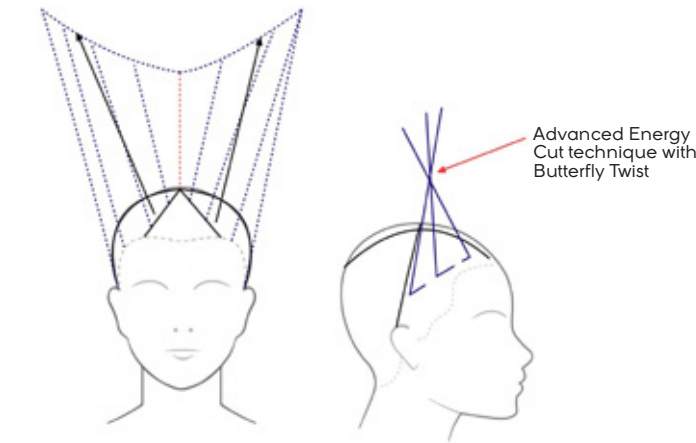
Cut



SECTION 5
Take a piece at the center junction and cut it to the base of the neck to create the guide.
Cut the entire section square to the guide length.

SECTION 1
Starting from the guide, cut medium-high grade.

SECTIONS 4 - 6
Cut both sections stationary guide to the guide length.

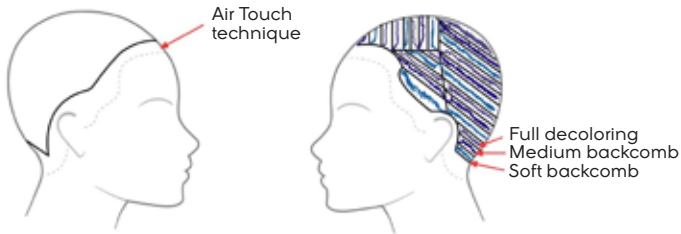


SECTIONS 2 - 3
Take both sections onto the back separation line and cut medium-high grade starting from the guide.

Comb the hair in natural fall and refine the perimeter. Make a cross parting (ear to ear through the vertex) and soften the volume using the Advanced Energy Cut technique with Butterfly Twist.

Advanced Energy Cut technique with Butterfly Twist
Section off pieces as you would make for highlights. Twist once the section you obtain and cut palm up.

Color



Section off the perimeter of the hairline, make diagonal partings and lighten using the Air Touch technique.

Section off a rectangle between mid eyebrow arches and the vertex, then make a cross parting.

Now follow the diagram:

• First section: make a zig-zag sectioning and backcomb the lower pieces, then apply **Decolor B Diamond + Decolor B Pro-Force Bondor 101** with a foil; saturate the upper pieces with the decolorant in another foil.

• Second section: apply **Decolor B Diamond + Decolor B Pro-Force Bondor 101** from roots to ends.

• Continue like this on all the head.

Tone creating a shadow at the roots (about 1,5 cm or 1/2 in) with **Framcolor Eclectic 5D Color Gloss 8N** (20 g/cc) + **8HC** (10 g/cc).

Tone the lengths with **Framcolor Eclectic 5D Color Gloss 00** (40 g/cc) + **10N** (20 g/cc).



Alternative color proposal

FRAMCOLOR
ECLECTIC/ECLECTIC CARE

Tone
8CT + 8HE
(20 + 10 g/cc)

5D Color Gloss
00 + 10N
(40 + 20 g/cc)



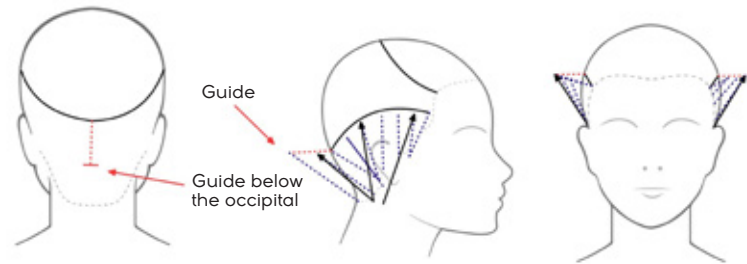
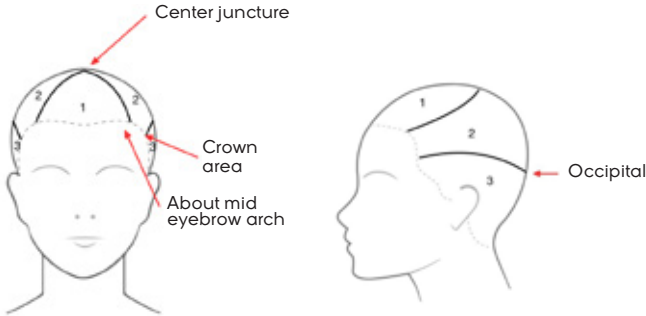
Styling

Apply **Morphosis Repair Velvet** and then **FOR-ME Shape Me Glaze 222** on wet hair. Once dry, wrap the hair with large rollers. Fix with **FRAMESI COLOR LOVER Design Fix & Flex Hairspray** or **BY Mist Hair Spray Light** and add a shine touch with **MORPHOSIS Sublimis Oil Pure**.

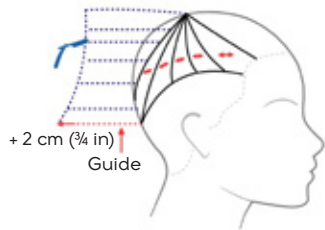
proposal #1
Icy Brown



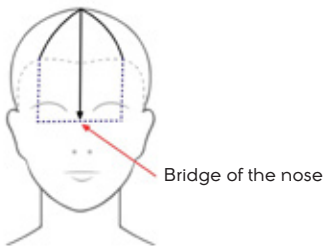
Cut



SECTION 3
Taking a small piece from the partline at the occipital, cut a guide below the occipital. Now, using the guide, and the round pinch technique, point cut the entire section on the separation line.



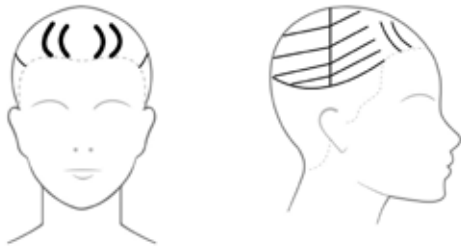
SECTION 2
Make radial partings and use the razor to cut 2 cm (3/4 in) longer than the guide and perpendicular to growth.



SECTION 1
Comb in natural fall and cut square to the bridge of the nose.

Texturize the cut in natural fall.

Color



Trace a line from end of eyebrow to end of eyebrow passing through the occipital.

Create some halfmoon shaped sections at the front, backcomb and lighten with **Decolor B No Dust**.

Use the same technique in the remaining section, but making diagonal partings with an increasing distance one from another.

Color the entire head with **Framcolor Glamour 5** (25 g/cc) + **5.61** (25 g/cc).

Tone with **Framcolor Eclectic 5D Color Gloss 9SB** (60 g/cc).



Alternative color proposal

FRAMCOLOR 2001/INTENSE	FRAMCOLOR ECLECTIC/ECLECTIC CARE	FRAMCOLOR FUTURA
5.024 + 6.022 (40 + 10 g/cc)	5.24 + 6SE (40 + 10 g/cc)	5NN + 5C (40 + 10 g/cc)
Tone 9SB (20 g/cc)	Tone 5D Color Gloss 9SB (60 g/cc)	Tone 9N (20 g/cc)



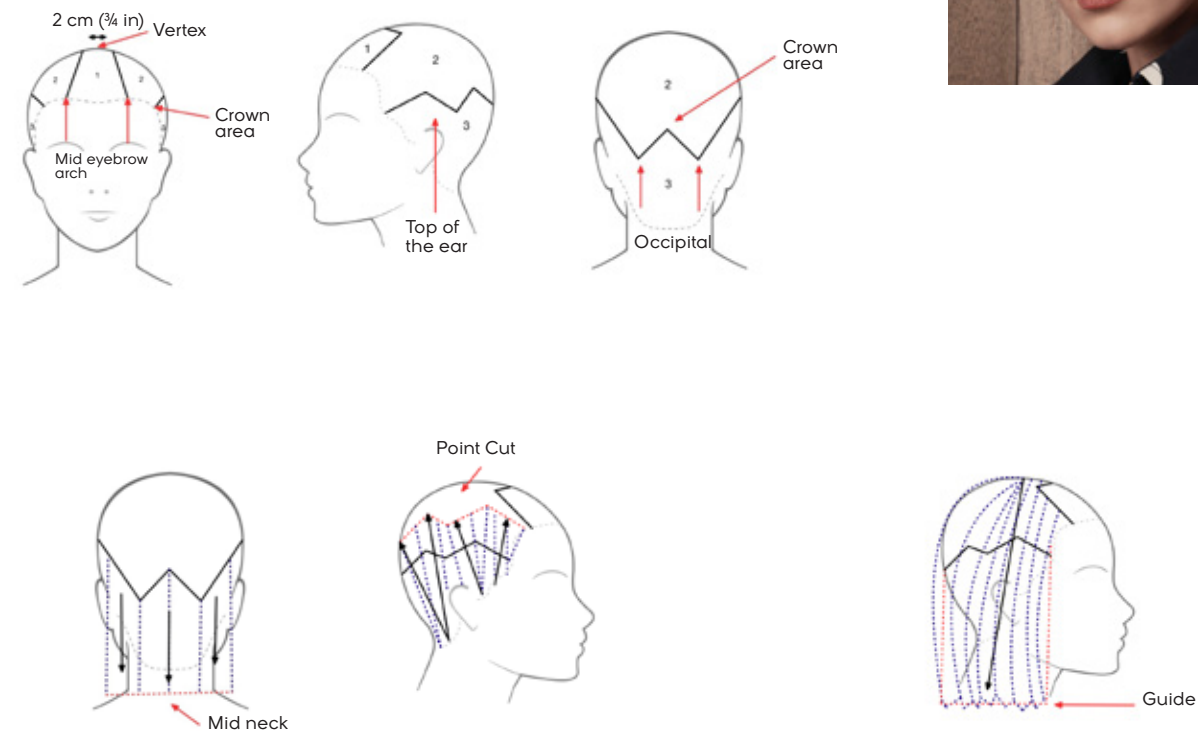
Styling

Give the hair body and shine by applying **FOR-ME Shape Me Glaze 222** or **BY Sparkling Mousse Strong**. Dry following the shape of the cut, while creating more volume on the top of the head. Define with a touch of **BY Working Clay**.

proposal #2
Irish Sun

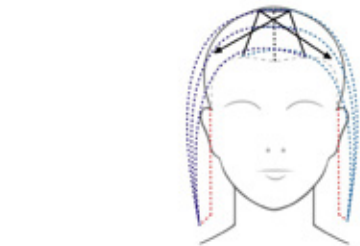


Cut



SECTION 3
Pinch cut square to mid neck.
Take the entire section perpendicular to the separation line following the diagonals, pinch and point cut.

SECTION 2
Comb in natural fall and point cut square to the length of section 3.



SECTION 1
Trace a central parting.
Comb each half of the section toward the opposite side and point cut connecting to the perimeter.



Make a cross parting (ear to ear passing through the vertex) and then texturize with the razor and the Advanced Undercut technique.

ADVANCED UNDERCUT technique
As if preparing for highlights, section off pieces using the razor and immediately cut the sections under the razor blade.

Color



Apply **Decolor B No Dust** on the lengths first and then on the roots, and lift up to level 9.

Isolate a 1 cm (1/2 in) wide section on the nape and isolate the sideburns (2 cm or 3/4 in).

Color the roots with **Framcolor Glamour 7.46** (60 g/cc).

Now make diagonal sections and section off thin pieces.

Tone the nape, sideburns and the thin pieces with **Framcolor Glamour 8.365** (60 g/cc).

Tone the remaining hair **Framcolor Eclectic 8DE** (30 g/cc).



Alternative color proposal

FRAMCOLOR 2001/INTENSE	FRAMCOLOR ECLECTIC/ECLECTIC CARE	FRAMCOLOR FUTURA
7.046 (60 g/cc)	7.25 + 7RDE + 7DE (40 + 5 + 15 g/cc)	7XN (60 g/cc)
8.046 + 8.044 + 8P (30 + 10 + 20 g/cc)	8.25 + 8RDE + 8DE (40 + 5 + 15 g/cc)	8XN + 8TRP + 8N (30 + 10 + 20 g/cc)
Tone 8SD (30 g/cc)	Tone 8DE (30 g/cc)	



Styling

Smooth style
Apply **FOR-ME SHAPE ME GLAZE 222** and dry. Make a slight backcomb to create a soft volume.

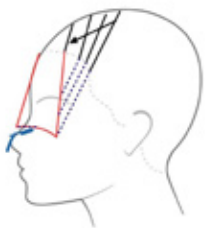
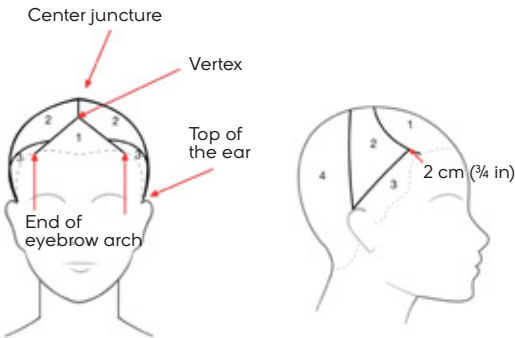
Waved style
Spray hair with **FRAMESI COLOR LOVER Flash Dry**. Dry the hair and make S shaped waves with the flat iron. Refine the ends with a touch of **BY Working Clay** or **MORPHOSIS Sublimis Oil Pure**.

proposal #3
Golden Sand

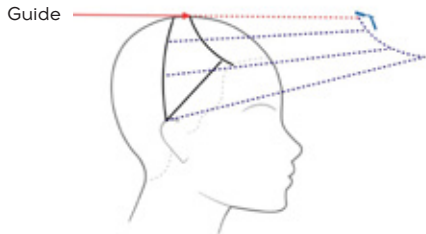
Pleasure
ITALIANSTYLE  framesi



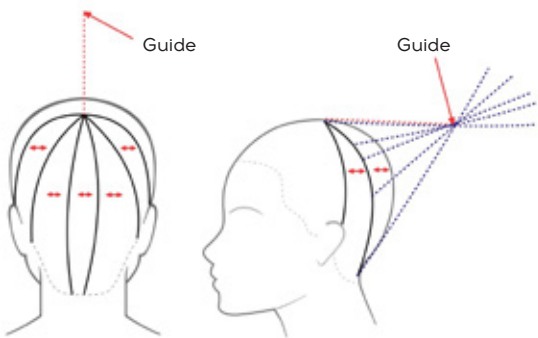
Cut



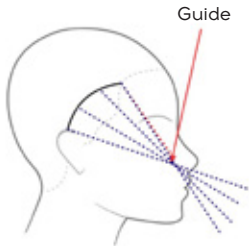
SECTION 1
Making diagonal subsections, and with the razor, cut the first one from the bridge of the nose to the cheekbone. Cut all the other subsections with stationary guide.



SECTIONS 2
Comb both sides forward and using the razor, cut from the measure found at the vertex to maximum length.



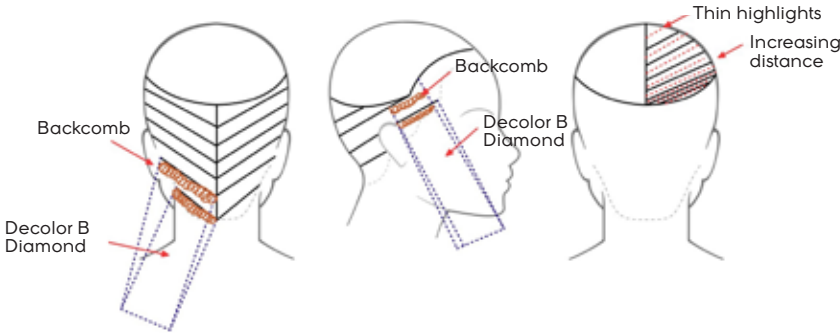
SECTION 4
Make radial partings. Using the length at the center juncture as a guide, cut each subsection to maximum length and perpendicular to growth using the Butterfly Twist and the Open&Close technique.



SECTIONS 3
Comb both sides forward and, using the length at the end of the eyebrow as a guide, cut to maximum length using the Butterfly Twist and the Open&Close technique.

Comb in natural fall and refine the perimeter of the cut.

Color



Isolate the top of the head as shown.

In the lower section backcomb the hair and use foils to apply **Decolor B Diamond** on the remaining pieces.

In the top section make diagonal subsections with increasing distance and create some highlights.

Color the roots (1 - 2 cm or 1/2 - 3/4 in) with **Framcolor Glamour 8.12** (15 g/cc) + **8.626** (15 g/cc) + **7.61** (30 g/cc).

Tone mid lengths (10 cm or 4 in) with **Framcolor Glamour 8.12** (15 g/cc) + **8.626** (15 g/cc) and tone the ends with **Framcolor Pure Pigment Plus /00** (30 g/cc) + **/62** (10 g/cc).



Alternative color proposal

FRAMCOLOR 2001/INTENSE	FRAMCOLOR ECLECTIC/ECLECTIC CARE	FRAMCOLOR FUTURA
8.00 + 7CC (50 + 10 g/cc)	8HE + 8SE (50 + 10 g/cc)	8NN + 7C (50 + 10 g/cc)
Tone 8P + FPPP /00 + FPPP /62 (30 + 30 + 10 g/cc)	Tone 8PE + FPPP /00 + FPPP /62 (30 + 30 + 10 g/cc)	



Styling

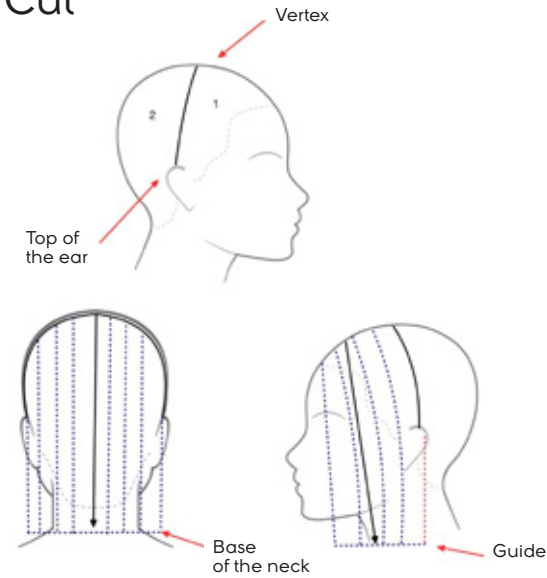
Apply **MORPHOSIS Repair Plumping Mousse** and **FRAMESI COLOR LOVER Flash Dry** on damp hair and shape while drying with a brush.
Add shine with **MORPHOSIS Sublimis Oil Pure** and fix with **FRAMESI COLOR LOVER Design Fix & Flex Hairspray** or **BY Mist Hair Spray Light**.

proposal #1
Cloudy Amber

Heritage
INTERNATIONAL HAIRSTYLE
framesi

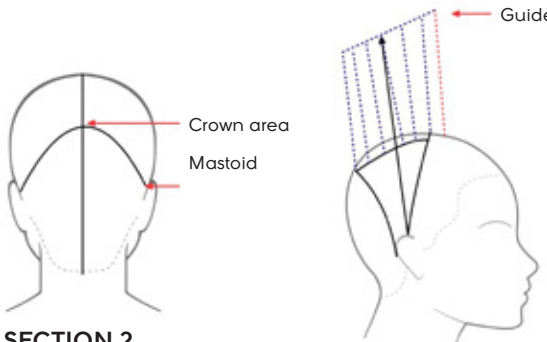


Cut



SECTION 2
Comb in natural fall and cut square to the base of the neck.

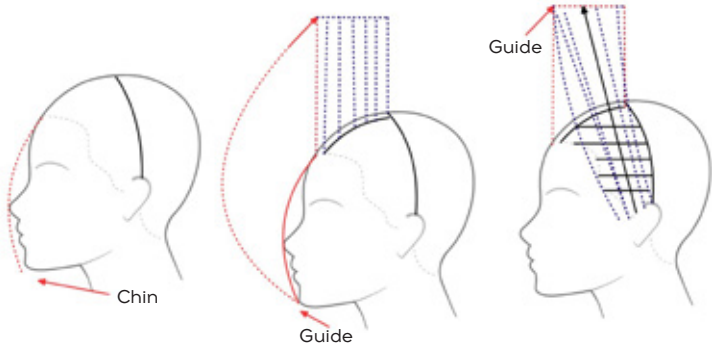
SECTION 1
Comb on the sides of the face and cut square to the guide length.



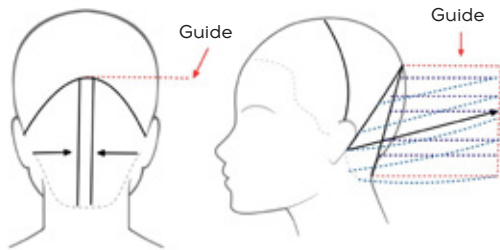
SECTION 2
Trace a central line and another line from mastoid to mastoid touching the crown line. In the upper part of the section create a central subsection, cut it diagonal and perpendicular to growth, with the length found at the vertex as a guide. Connect the remaining section to the guide subsection in a stationary guide and using the Pinch Cut technique.



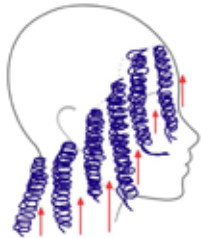
Make a cross parting and lighten the volume as follows: section off large pieces (3 cm or 1¼ in) as you would make for highlights and take them toward the opposite section, as shown. Create disconnection by cutting two different lengths next one to the other.



SECTION 1
Take a piece at the center of the front hairline and cut it to the chin to create the guide. Now cut a central subsection square and perpendicular to growth. Making horizontal partings, cut square the entire section using stationary guide.



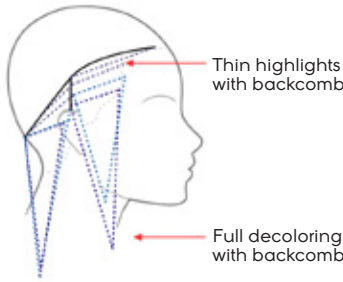
In the lower part of the section create a central subsection using the length on the crown line as a reference. Connect the remaining section to the guide subsection using the Pinch Cut technique and stationary guide.



Comb the entire hair in natural fall, twist softly 3 cm (1¼ in) thick sections all around the head and use the Countergravity Backcomb technique with thinning shears to lighten the perimeter of the cut.

COUNTERGRAVITY BACKCOMB technique
Twist the hair softly and with thinning shears point up, push the hair toward the scalp. Repeat toward the ends.

Color



Color the roots with **Framcolor Glamour 7.46** (60 g/cc).

Create highlights (+ 2 levels) with **Framcolor 2001 Color Exalt** (20 g/cc) processing 25 minutes.

Rinse and tone with **Framcolor Pure Pigment Plus /31** (20 g/cc).



Alternative color proposal

FRAMCOLOR 2001/INTENSE	FRAMCOLOR ECLECTIC/ECLECTIC CARE	FRAMCOLOR FUTURA
7.046 (60 g/cc)	7.25 + 7RDE + 7HCE (40 + 10 + 10 g/cc)	7XN (60 g/cc)
Color Exalt (20 g/cc)	Color Exalt (20 g/cc)	
Tone FPPP /31 (20 g/cc)	Tone FPPP /31 (20 g/cc)	



Styling

Apply **BY Sparkling Mousse Strong** or **FOR-ME Shape Me Glaze 222** to damp roots and dry enhancing the volume and flipping the ends.
Fix with **FRAMESI BY Mist Hair Spray Strong** or **FOR-ME Hold Me Extremely Hairspray 607**.

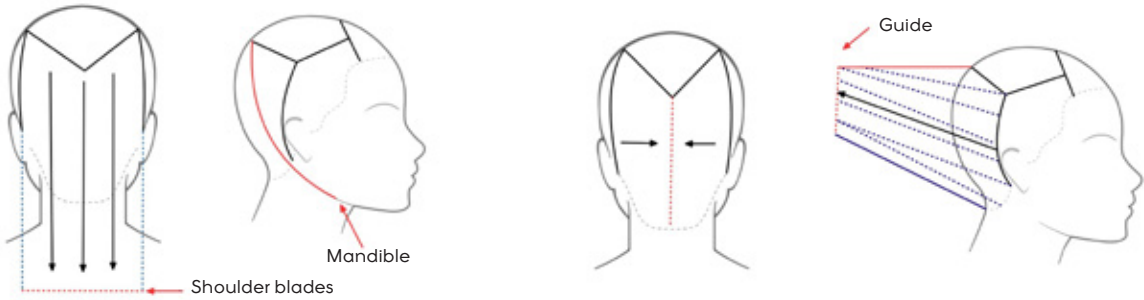
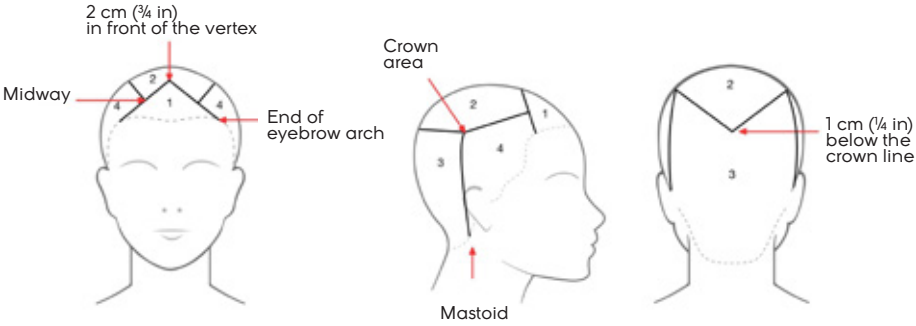
Version 2
Without flattering the volume, push the fringe back and define with **FOR-ME Define Me Gel 411**.

proposal #2
Golden Glory

Pleasure
INTERNATIONAL HAIR STYLE
framesi

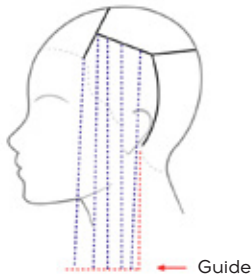


Cut

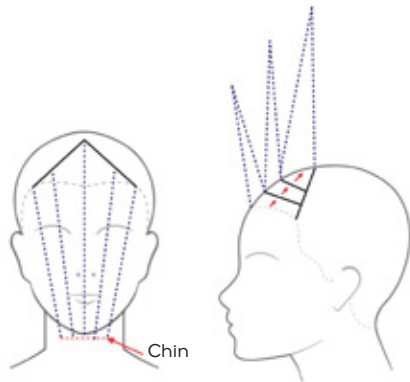


SECTION 3
Cut square to the shoulder blades, then, create a small guide at the center of the back partline and cut at the mandible.

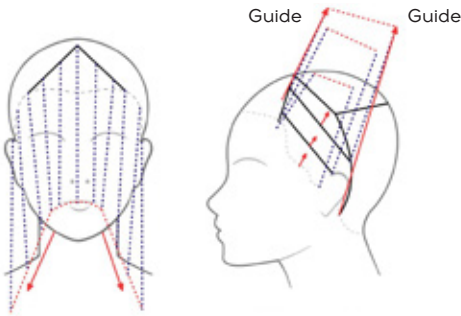
SECTION 3
Trace a central parting, take each part onto the separation line and pinch cut vertically to the guide.



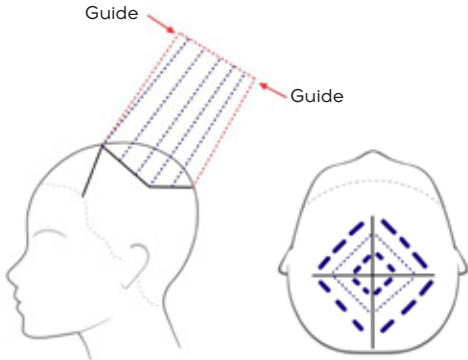
SECTIONS 4
Cut both sections square to the perimeter obtained in Section 3.



SECTION 1
Pinch cut the entire section to the chin. Now subdivide the section into three equal parts and layer cutting square and horizontally with travelling guide.



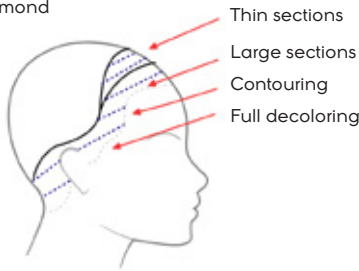
SECTIONS 4
Connect diagonally Section 1 to the perimeter of Sections 4. Now subdivide Sections 4 into three parts and layer diagonally with travelling guide.



SECTION 2
Pinch cut diagonally perpendicular to growth to connect Section 1 and Section 3. On the top of the head make a cross parting and lighten the volume with the Energy Advanced Cut technique alternating different dimensions.

Color

Use the backcombing technique to create highlights varying the application of Decolor B Diamond according to the diagram.



Color the base with **Framcolor Glamour 5.64** (60 g/cc).

All along the hairline create highlights with **Decolor B Diamond** and tone with **Framcolor Glamour 9.46** (30 g/cc) + **9.33** (30 g/cc).



Alternative color proposal

FRAMCOLOR 2001/INTENSE	FRAMCOLOR ECLECTIC/ECLECTIC CARE	FRAMCOLOR FUTURA
5.024 (60 g/cc)	5.24 (60 g/cc)	5NN + 5XN (40 + 10 g/cc)
Tone 9W + 9TRP + 9SD (30 + 10 + 10 g/cc)	Tone 5D Color Gloss 8HC + 00 + 9NW (20 + 10 + 10 g/cc)	Tone 9XN + 9TR + 9D (30 + 10 + 10 g/cc)



Styling

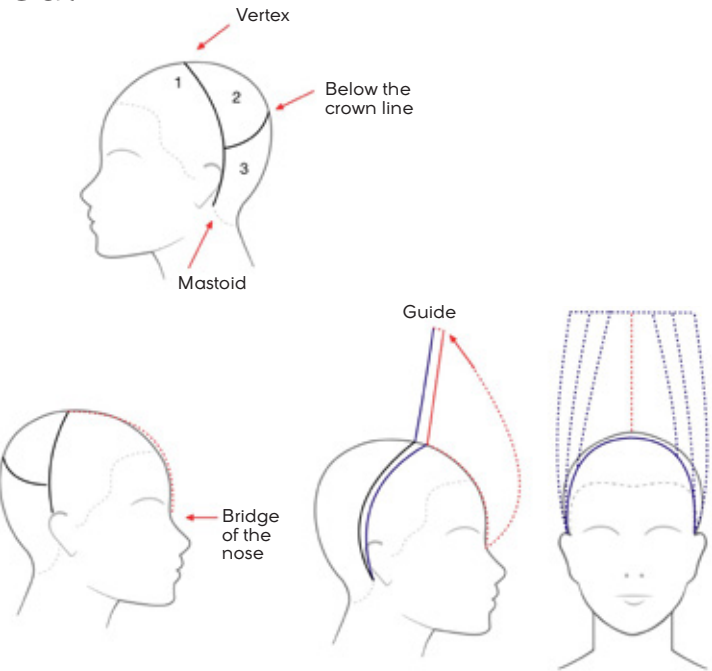
Smooth style
Apply **FRAMESI COLOR LOVER Hair Straightening Serum** or **FOR-ME Smooth Me Serum 218** and dry. Flat iron and spray with **FRAMESI COLOR LOVER Design Fix & Flex Hairspray** or **BY Mist Hair Spray Light**.

Curly style
Apply **FOR-ME Bring Me to the Beach Salt Spray** on damp hair and dry completely. Create curls using a small iron. Delicately rub the curls with your fingers to shape the volume. Finish with **FRAMESI COLOR LOVER Design Fix & Flex Hairspray** or **BY Mist Hair Spray Light**.

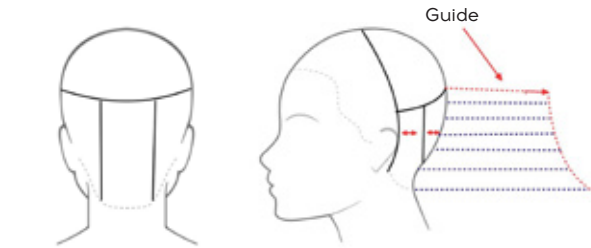
proposal #3
Sunset Peach



Cut



SECTION 1
Take a section at the vertex and cut it to the bridge of the nose to create the guide.
Create a 1 cm (1/4 in) wide section (from ear to ear) and cut it square to the guide.

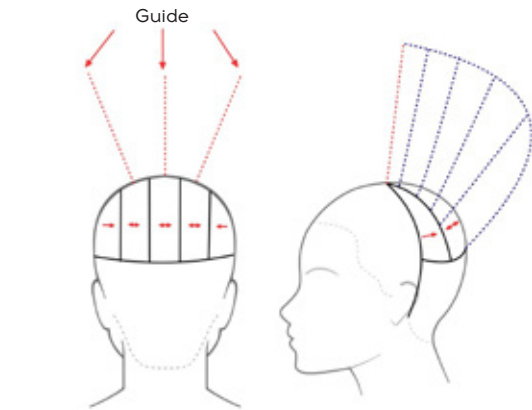


SECTION 3
Subdivide the section into three parts and, using the length of Section 2 as a guide, pinch cut to maximum length diagonally and perpendicularly to growth with the Open&Close technique.

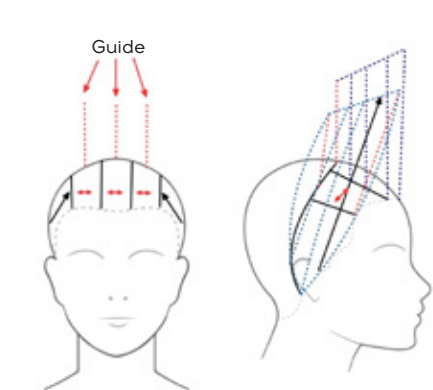


SECTION 1
Isolate a section along the hairline, make five soft twists and lighten them with thinning shears and the Countergravity Backcomb technique. Now, without combing the twists, pinch them all together to the bridge of the nose and cut the excess palm up.

COUNTERGRAVITY BACKCOMB technique
Twist the hair softly and with thinning shears point up, push the hair toward the scalp.
Repeat toward the ends.



SECTION 2
Subdivide the section into five parts and cut round with reference to the guide: cut the three central parts perpendicular to growth and the two side parts with traveling guide.

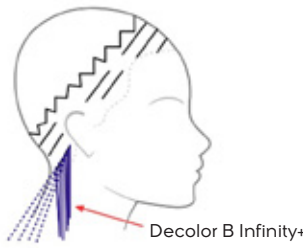


SECTION 1
Subdivide the section into five parts. Use the length at the vertex as a guide and cut the three central parts diagonally and perpendicularly to growth. Pinch cut the side sections with stationary guide.

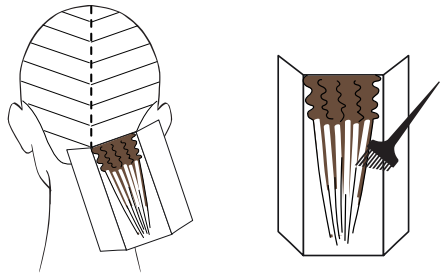


Make a cross parting and texturize the proposal using the Energy Advanced Cut technique on large sections.

Color



Isolate the hairline as shown and make highlights with **Decolor B Infinity+**.



Use the Easy Balayage technique on the remaining hair, still using **Decolor B Infinity+**.

Tone the entire head with **Framcolor Eclectic 5D Color Gloss 9BA (30 g/cc) + 9H (20 g/cc) + 9HC (10 g/cc)**.



Alternative color proposal

FRAMCOLOR 2001/INTENSE	FRAMCOLOR GLAMOUR	FRAMCOLOR FUTURA
Tone 9SB + 8.046 + 9P (30 + 10 + 20 g/cc)	Tone 9.36 + 9.46 + 9.53 (20 + 10 + 30 g/cc)	Tone 9N + 9XN + 9D (20 + 10 + 30 g/cc)



Styling

Apply **FOR-ME Bring Me To The Beach Salt Spray 223** or **BY Sparkling Mousse Strong** to add volume to the roots. Dry softly using a brush and fix with **FRAMESI COLOR LOVER Design Fix & Flex Hairpray**.

Version 2
Apply **FOR-ME Bring Me To The Beach Salt Spray 223** or **BY Sparkling Mousse Strong** on damp hair and use the iron to create loose twists.
Fix with **FRAMESI COLOR LOVER Design Fix & Flex Hairpray**.

is THE HAIR TREND

2025 **STEP by STEP**

General Management
Fabio Franchina, Patrizia Caldera

Social-Economical Analysis
C.I.M.F. Coordinamento
Informazioni di Mercato Framesi

Framesi Research Center
Francesca D'Ambrosio, Rocco Settino,
Daniele Carroli, Ombretta Locci

Medical-Scientific Aspects
Ivano Sironi

Copywriters
Ilaria Pizzoferrato, Patrizia Annovazzi

Creative Agency
Next Agency Milano

Art Directors & Fashion Consultants
Ilaria Pizzoferrato, Paolo Lungo

Makeup Artist
Silvia Dell'Orto

Global Technical Director
Armando Petracci

Italian Style Artistic Directors
Sabrina Arvizzigno, Daniele Pavarani,
Gigi Guerretta

Cutting Method Manager
Pino Di Tella

Hair Stylists Italian Style Energy
Marco Barbaresi, Elisa Barbetti, Sandra Bucalossi,
Giada Capuano, Alice Carrai, Enrico Dal Forno,
Salvatore Giamborino, Davis Pozzobon,
Rita Montanari, Monica Odorizzi, Sara Peli,
Luca Pudda, Cristian Repupilli, Giuseppe Spina,
Nicola Valzania

Hair Stylists Italian Style Framesi
Virginia Bianconi, Silvia Bossolini, Carlotta Canciani,
Gino Curci, Michele Curci, Angelo Di Paola,
Giada Guerrini, Mario Matrullo, Marina Monitillo,
Silvia Ottobrini, Elena Petrini, Laura Rivaldi,
Davide Rosatti, Biagio Riglietta, Giuseppe Sifanno,
Kocis Sordillo, Giulio Trizio, Claudio Zavalloni

Hair Stylists Italian Style International
Eugene Cheong, Billy Dogan,
Christophe Di Giandomenico, Anastasios Kermos,
Kenza Lum, Natasha Maconi, Jiro Okabe,
Ezequiel Perata, Leonardo Trigueros, Sally Ward

Italian Style USA Team