

one & more



spring
summer
collection
2013

& step
by step



 framesi

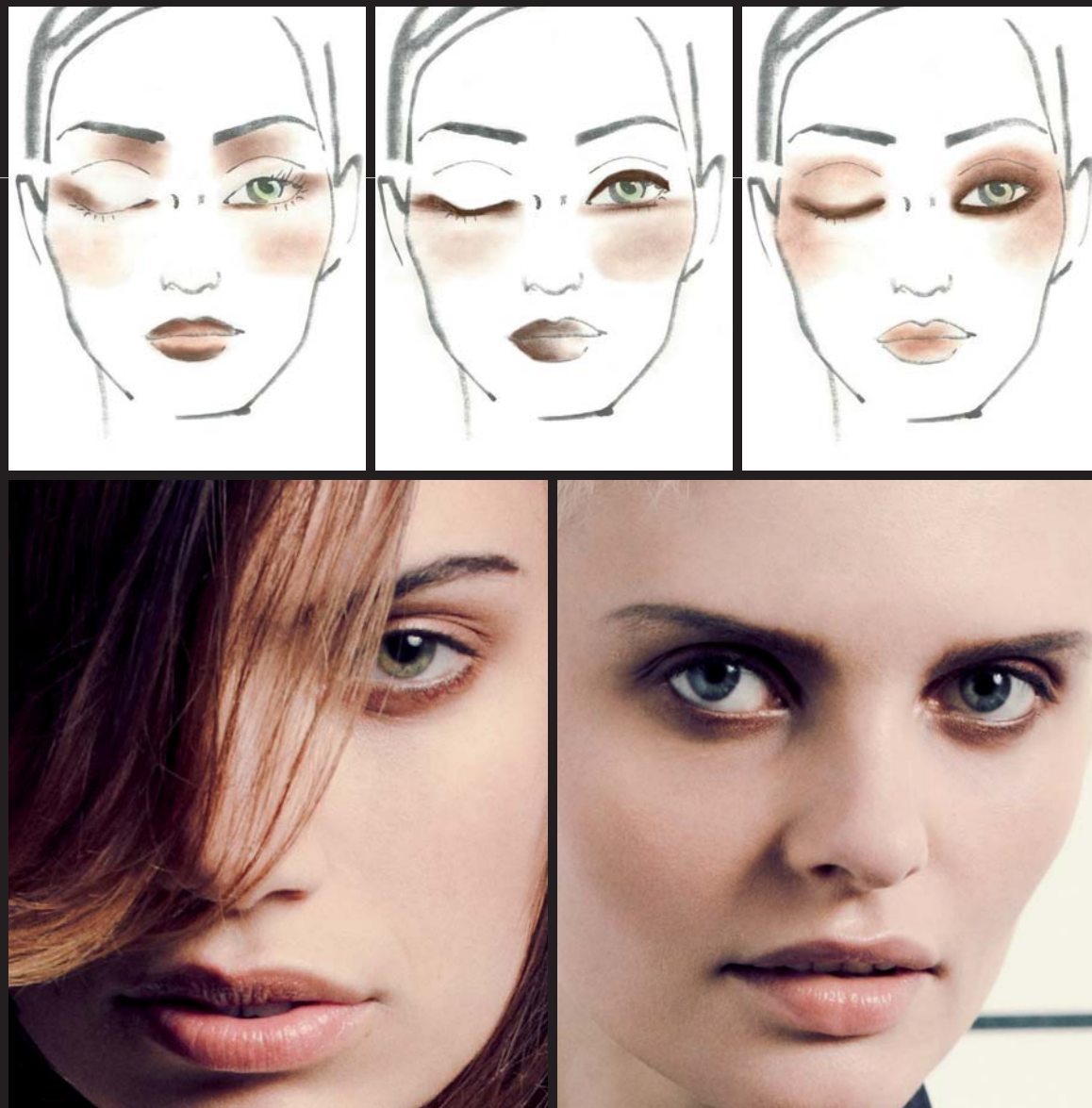
make-up

Natural look

In a trend that sees women and men looking increasingly alike, make-up has to be natural and delicate. On the face, therefore, a flawless nude look is best, a lightness that is also suitable for hot summer days. Radiant skin is perfect for emphasizing the eyes, barely accentuated by creamy, neutral eye shadows.

The eyes are also highlighted by well-groomed eyelashes, and by eyebrows, worn quite thick, almost masculine.

On the lips, pale and matt colors, not far from the natural skin tone. Make-up aims to blend gentle facial features and decisive details, continuing the game of opposites started by fashion.



hair fashion

Simple rules for cuts and colors

Far from being interchangeable, cuts and colors for him and for her recognize each other in the same precise and linear approach.

The preference for an absolute blond, for example, unites the sexes, but without confusing their identity. Just as opposing light and dark, can exalt both femininity and an ironic, carefree masculinity.

Italian Style Energy promotes the ONE trend with lightened cuts and moderate volumes that suggest great practicality, but also great character. Colors are impactful. In addition to the total blonds, there are proposals that favor the use of contrasts, selected particularly from a range of reds and achieved on deep tone bases.

If fashion suggests clear-cut lines and two tones, hair responds with fancy-free profiles and shimmering colors, re-establishing the perfect balance between a trendy choice and the desire for genuine style.

In the ONE collection, Italian Style Energy expresses its typical creative flair, including various techniques that texturize the hair and give characteristic movements to the volume.



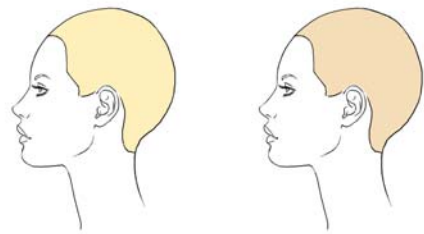
The *butterfly twist*, *open and close* and *counter-gravity* techniques are explained in this handbook and are the subject of specific cutting courses that give each stylist the opportunity to become a highly creative cutting expert.





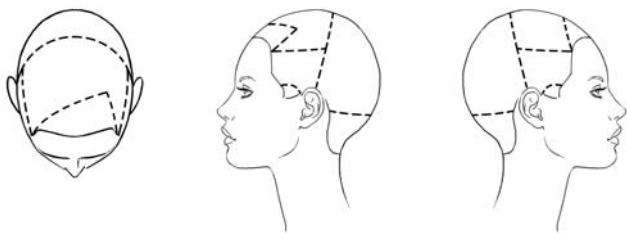
one&...

Proposal #1 woman



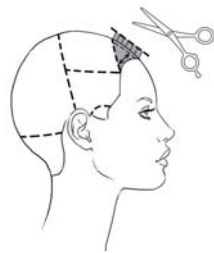
Decolor B cream plus to maximum level
Framcolor Glamour 10

Decolorize the entire head with **Decolor B cream plus** to maximum level.
Tone with **Framcolor Glamour 10**.



1a. 1b. 1c.

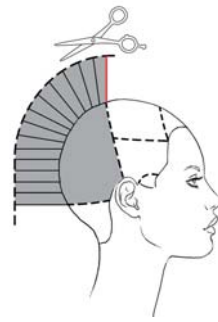
Isolate a front triangle from the corner of the eyebrows to a point 6 cm (2 1/2") inside the left hairline.
Isolate both sideburns tracing a curved line. Trace a line from ear to ear passing 2 cm (3/4") behind the vertex.
Trace a horizontal line at the end of both eyebrows. Trace a line from ear to ear passing through the occipital bone.



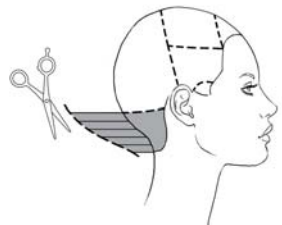
2.
Front triangle: take vertical partings and cut square to 1 cm (1/2") perpendicularly to growth.



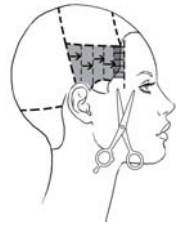
3.
Top section: take vertical partings and cut diagonally from 1 to 8 cm (1/2 to 3 1/4").



4.
Back top section: utilizing the length at the vertex as a guide cut round to the occipital.



5.
Nape: cut diagonally from the length at the occipital to 2 cm (3/4") at the nape.



6.
Side sections: create a vertical guide at the hairline by cutting square to a length of 1 cm (1/2"). Cut the remainder section over section leaving the side sections completely disconnected from the back.



7.
Lighten the sideburns slide cutting from 3 to 6-8 cm (1 1/4 to 2 1/4 - 3 1/4").



8.
Soften the proposal using blending shears.



Apply **Morphosis Velvet** (Framesi Hair Treatment Line Corrective Moisturizing Fluid), to wet hair.
While blowing dry, apply **By Framesi Sparkling Mousse light** to damp hair.
Complete drying using your fingers to create volume at the roots and then shape soft ends with a brush.



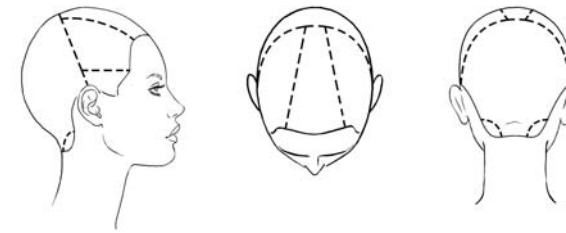
one&...

Proposal #2 woman



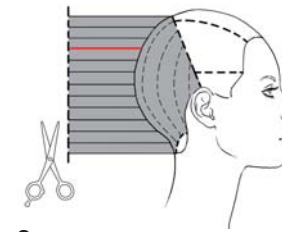
Framcolor 2001 4HR + 5MP
Decolor B
Framcolor Eclectic 9GE + 7AE
Framcolor Eclectic 7AE + 7RFE

Color the base with **Framcolor 2001 4HR + 5MP**. Isolate three concentric L shaped sections 1/2 cm (1/2") thick between the vertex and the hairline.
Lighten to level 8 using **Decolor B**. Tone horizontal sections with **Framcolor Eclectic 9GE + 7AE**. Tone vertical sections with **Framcolor Eclectic 7AE + 7RFE**.

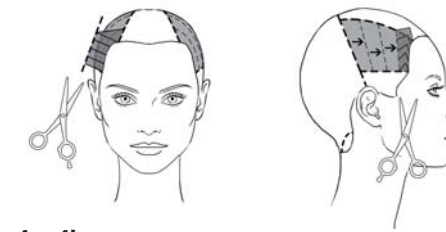


1a. 1b. 1c.

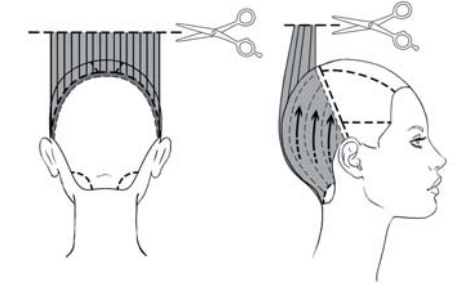
Trace a line from ear to ear passing through the center juncture.
Isolate a trapezoid between the eyebrow arches and the back section.
Isolate 3 cm (1 1/4") sideburns. Isolate the corners of the nape.



3.
Remove any excess by combing the same sections horizontally and cutting square to the length at the crown.

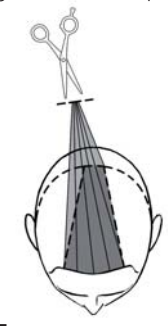


4a. 4b.
Side sections: cut a vertical guide at the hairline to a length of 2 - 3 cm (3/4 - 1 1/4"). Cut the remaining partings section over section.

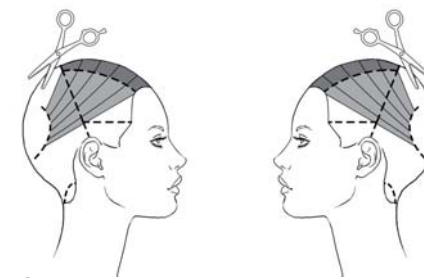


2a. 2b.

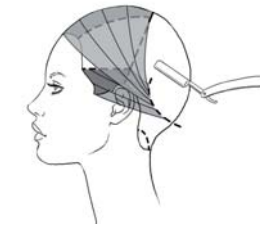
Start cutting at the center juncture.
Create a guide 3 cm (1 1/4") wide along the parting. Comb vertically and cut square to 7 cm (2 3/4").
Now transport the back in vertical sections to the guide and cut square.



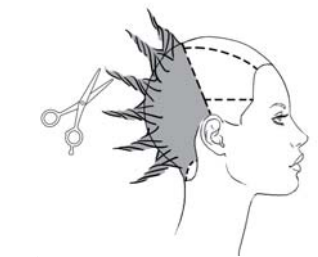
5.
Comb the trapezoid to its right back corner and point cut the entire section to 9 cm (3 1/2").



6a. 6b.
Now comb the section to the right side and remove excess weight using blending shears. Slide cut the ends in a C shape. Repeat on the left side.



7.
Comb the sideburns with the fringe and cut in a C shaped line from 3 cm (1 1/4") from the tip of the ear to maximum length.



8.
Deconstruct the back section using the Twisting Cut technique respecting the sections at the nape.



Apply **BY Framesi Frozen Glaze** to wet hair to add shape and shine. Blow dry the back using your fingers creating volume at the top and adherence to the nape. Finish the front softly and refine using a brush.
Apply **I.Dentity Protect.it** and smooth the ends with the flat iron.



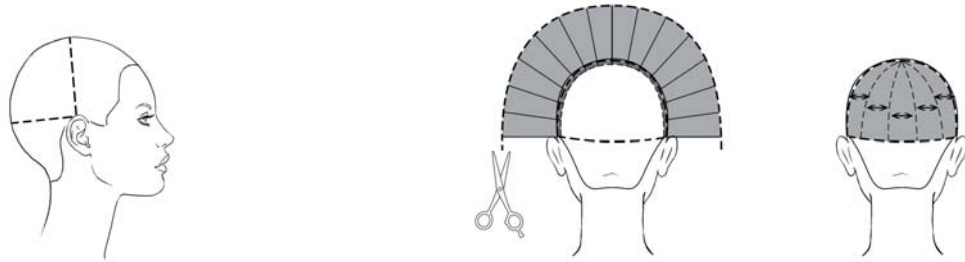
one&...

Proposal #3 woman



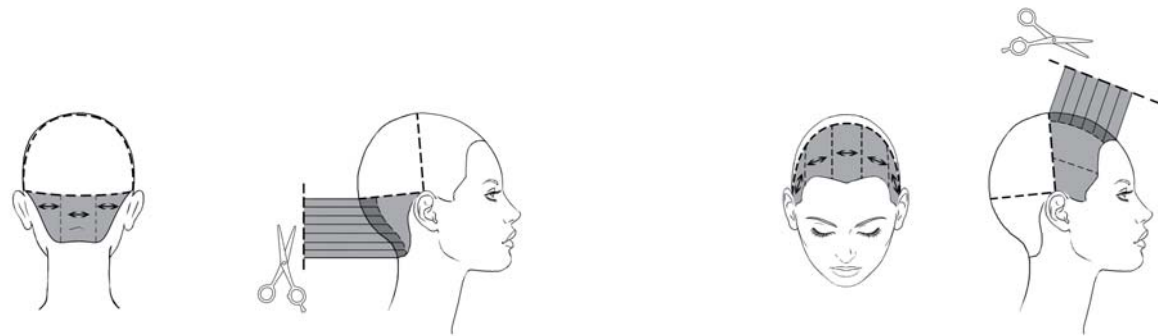
Framcolor 2001 6KR
Decolor B
Framcolor 2001 8KR
Framcolor 2001 9TRP + 70DOC

Create a base with **Framcolor 2001 6KR**. Lighten the mid shaft and ends to a level 8 using **Decolor B** and the Backcomb technique. Tone with **Framcolor 2001 8KR**. Isolate three crescent shaped sections ½ cm (less than ¼") thick between the vertex and the hairline. Color with **Framcolor 2001 9TRP + 70DOC**.



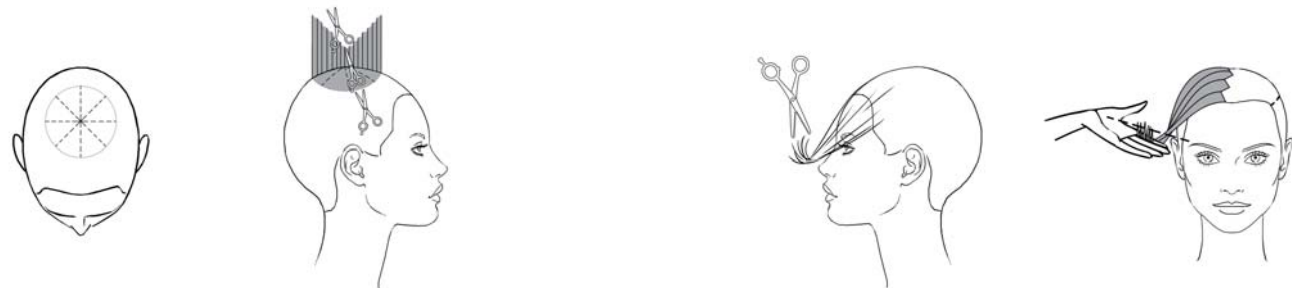
1.
Trace a line from ear to ear passing through the vertex and isolate the front section.
Trace a line from ear to ear passing 1 cm (½") above the occipital bone and isolate the bottom section.

2a. 2b.
Create a guide along the top parting and cut round to 15 cm (6").
Now subdivide the back top section with four radial partings.
Starting in the center comb the hair perpendicular to growth and cut round from the guide.



3a. 3b.
Divide the bottom into three vertical subsections. Comb each one horizontally and perpendicular to growth while cutting square to the length of the previous section.

4a. 4b.
Divide the top into five subsections.
Comb each one vertically and cut square to the found length at the vertex.



5a. 5b.
Blow dry. Create radial partings at the vertex respecting the flats and curves of the head. Comb each section vertically and cut from 3-4 cm (1¼ - 1½") in the center to maximum length using the Open&Close technique*.

6.
Comb the fringe in natural fall and cut at the tip of the nose with blending shears using the Butterfly twist technique.



7.
Soften the ends using the Point Cut technique.

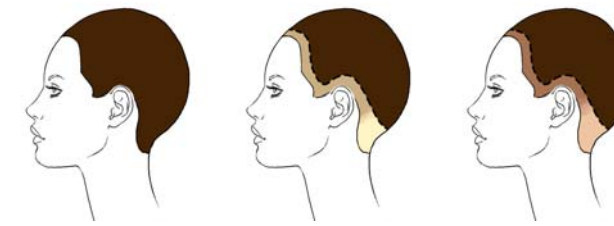


Apply **I.Dentity Look@Me** to wet hair.
Blow dry from underneath with the head upside down.
Apply **I.Dentity Protect.it** on the ends and give a round shape with the flat iron. Ruffle the hair with the blow dryer and finish with **BY Framesi Black Lava Mega Hold**.



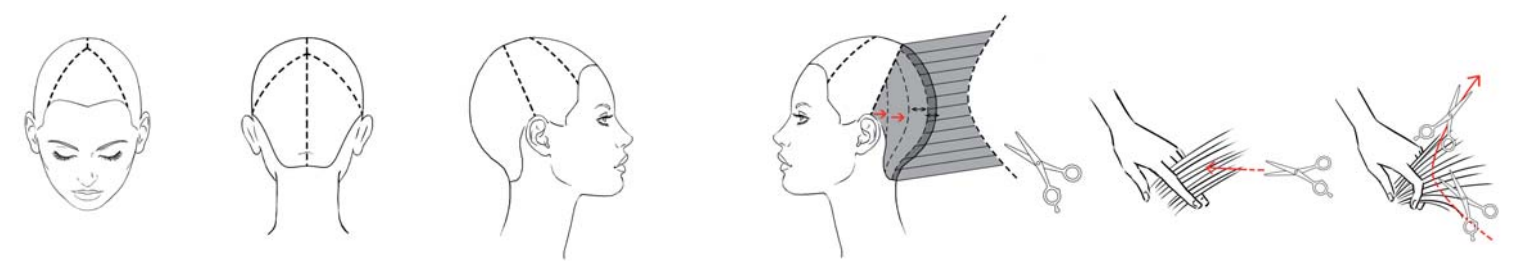
one&...

Proposal #4 woman



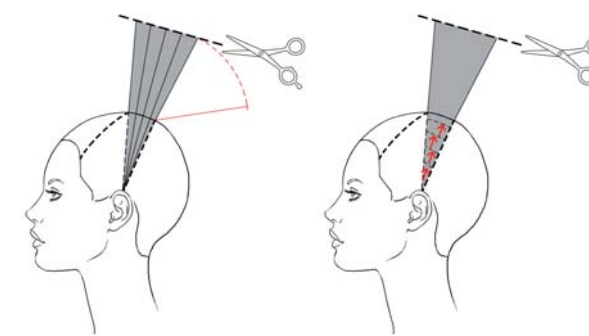
Framcolor 2001 4NP
Decolor B
Framcolor 2001 8KR

Color the base with **Framcolor 2001 4NP**. Isolate a 5 cm (2") band along the hairline. Back comb and apply **Decolor B**. Lighten the front and the sides to a level 7 and the back to a level 8. Tone with **Framcolor 2001 8KR**.

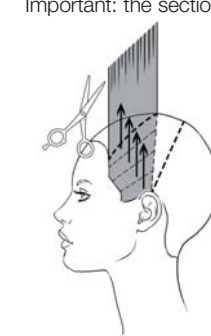


1a. 1b. 1c.
Isolate a front triangle joining the ends of the eyebrows and the vertex.
Trace a line from the vertex to the nape.
Trace two lines from 5 cm (2") below the vertex to the tip of the ears.

2.
Subdivide the back sections vertically and cut perpendicularly to growth using the Horse Saddle technique: take each section horizontally and start cutting inwards keeping your fingers straight. Once you have reached the knuckles, bend your fingers and direct scissors outwards to create a concave line.
Important: the sections at the mastoids should be transported slightly backwards.



3a. 3b.
Subdivide the side sections tracing a line from the vertex to the ear.
In the back utilizing the previous length as a guide, comb subsections vertically and cut diagonally section over section allowing the guide to travel.



4.
In the front comb subsections vertically and cut diagonally utilizing the previous top section as a stationary guide.



5a. 5b.
In the top section create a guide at the vertex by combing the hair slightly to the right and utilizing the found length.
Cut the remainder of the section the same way taking horizontal partings.

6.
Repeat directing the hair slightly to the left creating a central point in the fringe.



7.
Soften the volume using the Counter-Gravity technique.

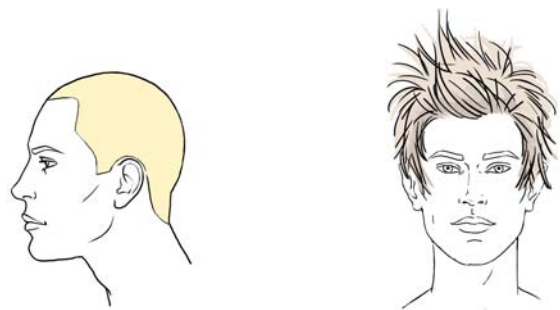


Apply **BY Framesi Sparkling Mousse light** on wet hair. Blow dry using your fingers to add a soft and natural movement.
Finish with **BY Framesi Mist Hair Spray light** keeping the locks separated and well defined.



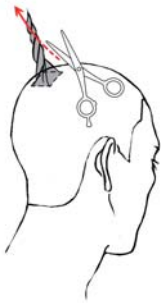
one&...

Proposal #1 man

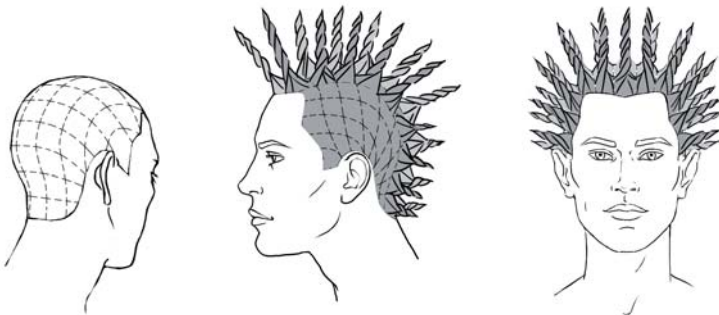


- Decolor B cream plus to maximum level
- Framcolor 2001 9P
- Framcolor 2001 11A

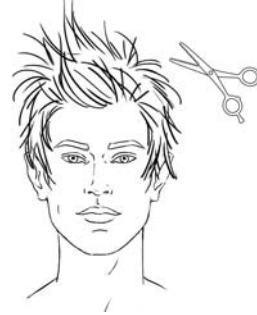
Decolorize the entire head with **Decolor B cream plus** to maximum level.
Tone the roots with **Framcolor 2001 9P**. Tone the mid shaft and ends with **Framcolor 2001 11A**.



- 1.** Isolate a 3 cm (1¼") square at the center juncture, twist the section four times and slide cut from 3 to 7-8 cm (1¼ to 3").



- 2a. 2b. 2c.** Repeat this technique throughout the entire head at the following lengths:
 - crown area from 3 to 7-8 cm (1¼ to 3")
 - sides from 2 to 5 cm (¾ to 2")
 - nape from 2 to 4 cm (¾ to 1½")
 - fringe from 3 to 10 cm (1¼ to 4")



- 3.** Soften and sculpt this proposal using blending shears.

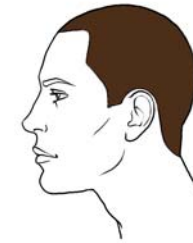


Apply **I.Dentity X.Alt** on wet hair and blow dry with the diffuser to add volume.
Ruffle the hair and define the sections with a mix of **I.Dentity Stay.Matte** and **Morphosis Argan Oil** to enhance the cut profile and deeply hydrate the hair.



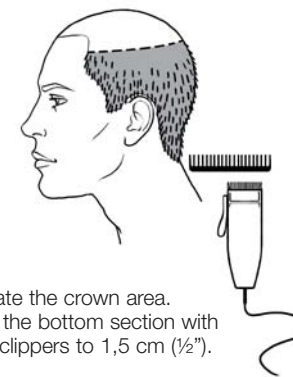
one&...

Proposal #2 man

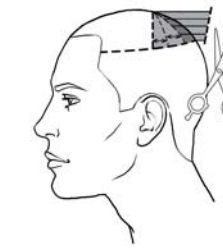


- Framcolor 2001 5EXN

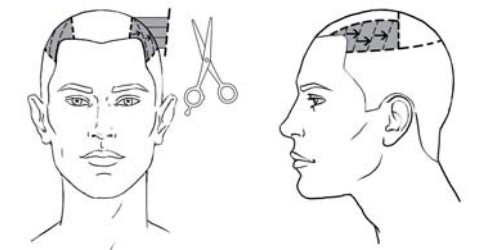
Color with **Framcolor 2001 5EXN**.



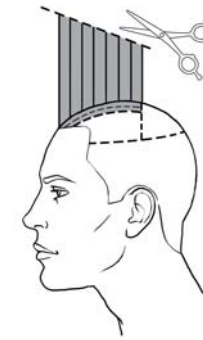
- 1.** Isolate the crown area. Cut the bottom section with the clippers to 1,5 cm (½").



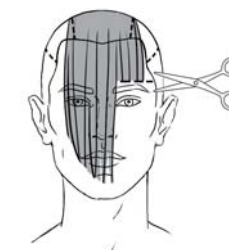
- 2.** Trace a line in the crown area passing through the vertex. Cut the back section diagonally from 1,5 to 10 cm (½ to 4") perpendicularly to growth.



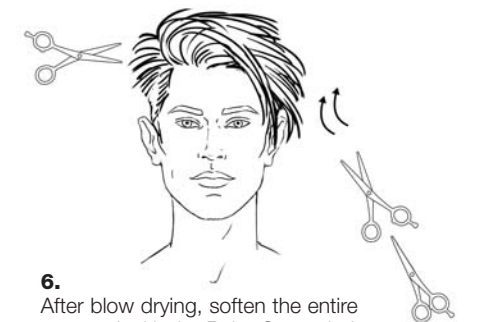
- 3a. 3b.** In the front section trace two lines at the eyebrow arches. Cut the side sections with diagonal partings and using the length in the back section as a guide. Cut palm up, section over section.



- 4.** Subdivide the central front section taking vertical partings perpendicular to growth and cutting diagonally from 10 to 18 cm (4 to 7").



- 5.** Comb the fringe in natural fall and cut to 1 cm (¼") only above the left eye.



- 6.** After blow drying, soften the entire proposal with the Point Cut technique and use the Counter-Gravity technique in the remaining part of the fringe.



Apply **BY Framesi Sparkling Mousse light** on wet hair. While blow drying, give a round shape to the roots and let the ends straight.
Refine with **I.Dentity Self.Control** to fix the longest strands.



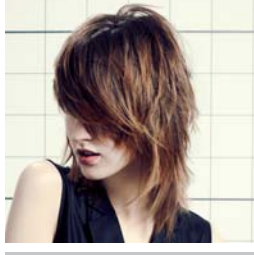





spring summer 2013

color
collection

one&...

ENERGY
ITALIANSTYLE framesi

	FRAMCOLOR 2001	FRAMCOLOR ECLECTIC	FRAMCOLOR FUTURA	FRAMCOLOR GLAMOUR	Contrasts
 #1 WOMAN	Decolor B cream plus 11A ml/cc 60	Decolor B cream plus 9PE + 0E ml/cc 30 + 30	Decolor B cream plus 10A ml/cc 60	Decolor B cream plus 10 ml/cc 60	=
 #2 WOMAN	4HR + 5MP ml/cc 30 + 30	=	4BV + 6RS ml/cc 30 + 30	4.65 + 6.4 ml/cc 40 + 20	Decolor B Framcolor Eclectic 9GE + 7AE Framcolor Eclectic 7AE + 7RFE
 #3 WOMAN	6KR ml/cc 60	6NE + 6HCE ml/cc 30 + 30	6N + 6DS ml/cc 40 + 20	6 + 6.36 ml/cc 30 + 30	Decolor B Framcolor 2001 8KR Framcolor 2001 9TRP + 70DOC
 #4 WOMAN	4NP ml/cc 60	4NE ml/cc 60	4N ml/cc 60	4 ml/cc 60	Decolor B Framcolor 2001 8KR
 #1 MAN	Decolor B cream plus	Decolor B cream plus	Decolor B cream plus	Decolor B cream plus	Framcolor 2001 9P Framcolor 2001 11A
 #2 MAN	5EXN ml/cc 60	5NE ml/cc 60	5N ml/cc 60	5 ml/cc 60	=



spring summer



collection 2013

MAKE-UP

fresh-looking face

The make-up that goes with the MORE trend is delicate, achieved with pastel shades to avoid overloading the face.

A light blush on the cheekbones creates a fresh, spring look.

Eyes are crystal clear, emphasized by abundant mascara and pale, powdery eye shadows.

Lips are pink, pale orange or geranium red, topped with a sheer gloss.

The overall look should be simple and sunny, to balance the excesses of color and volume in clothing and accessories.



HAIR FASHION

emphasis on personality

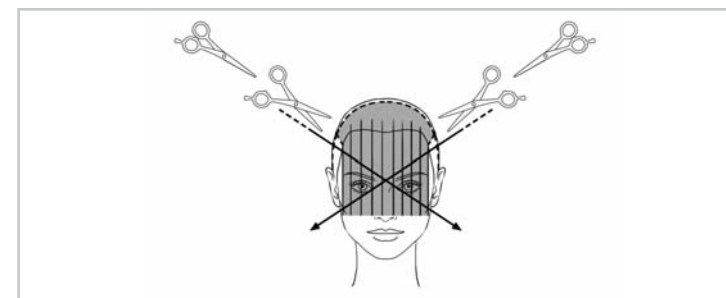
If anything goes, in the MORE trend, hair too suggests a host of different solutions.

Straight and wavy, very short and very long, red, brunette and blond: Italian Style Framesi has created a multi-faceted and exuberant collection.

Movement and color are in tune with fashion and the global image is lively and fancy-free. The choice, both for him and her, is between short cuts, with striking forelocks, and longer, softer styles, achieved with cutting techniques that raise the volume without emptying it.

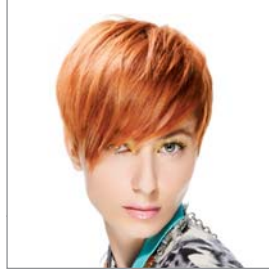
In hair too, as in clothing, overlapping colors give depth and lend themselves to a range of personalizations. Because if appearances follow no strict rules, the desire to feel unique and inimitable becomes more pressing.

The finishing touches and texturizing of Italian Style Framesi cuts are achieved with certain techniques (Energy advanced cut, chipping, open and close, crossing) that are among the key features of the Italian Style method.



Thanks to these techniques, volumes can be adapted to the face and lightened where necessary with exceptional results that gratify the cutting specialists and enhance the quality of their styling.





...&more

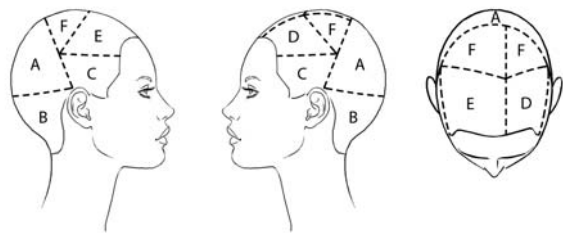
Proposal #1 woman



Framcolor 2001 8TRP + 9E
Framcolor 2001 6HR + 6VM

Create a base with **Framcolor 2001 8TRP + 9E**.

Isolate a small rectangular section just inside the hairline as shown in the diagram (1 cm - ½" thick) and apply **Framcolor 2001 6HR + 6VM**.



1a. 1b. 1c.

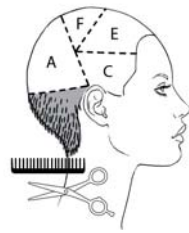
Trace a line from ear to ear passing through the center juncture.

Trace a line from the tip of one ear to the other passing 1 cm (½") above the occipital bone.

On both sides trace a horizontal line 1 cm (½") below the parietal ridge.

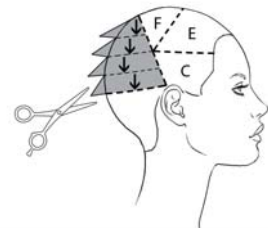
Trace a line from the inside corner of the left eye to the center juncture.

Trace two diagonal lines 2 cm (¾") behind the vertex in the direction of the mastoids.



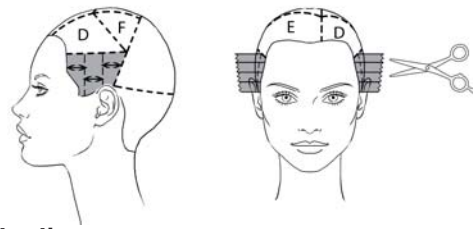
2.

Section B – Cut scissor over comb to a length of 2 – 3 cm (about 1").



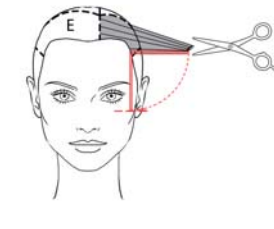
3.

Section A – Utilizing the length of Section B as a guide, point cut horizontal subsections allowing the guide to travel subsection over subsection while respecting the flats and the curves of the head.



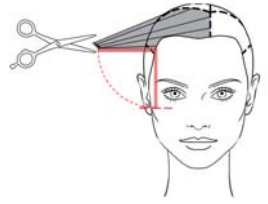
4a. 4b.

Sections C – On both sides, point cut vertical subsections perpendicular to growth utilizing the length of Section A as a guide.



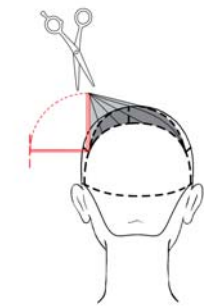
5.

Section D – Create a guide at the cheekbone. Now transport the entire section just below parietal ridge and cut connecting the guide to the length of Section A.



6.

Section E - Repeat the same steps as in Section D.



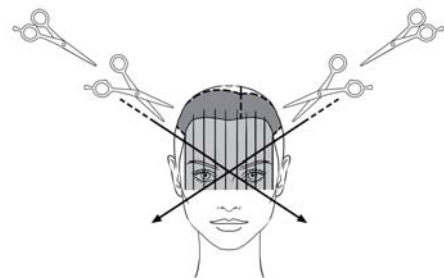
7.

Sections F – Transport Sections D and E to the back left corner of Section D then Point Cut vertically to the found length.



8.

Refine the volume using blending shears.

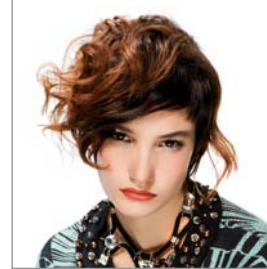


9.

Finish sections D and E with the Crossing Cut technique*.



Apply **I.Dentity Look@Me** on wet hair to add volume and shine. Blow dry softly and shape the bang to either side. Create separation with a mixture of **I.Dentity Shine.On + Morphosis Velvet (Framesi Hair Treatment Line Corrective Moisturizing Fluid)**.



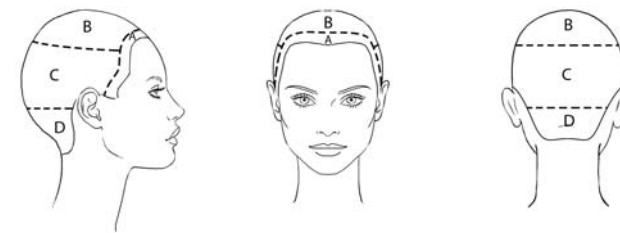
...&more

Proposal #2 woman



Framcolor 2001 4W + 5NC
Decolor B
Framcolor Eclectic 7HCE + 7RDE

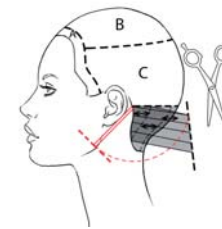
Create a base with **Framcolor 2001 4W + 5NC**. On top of the head create highlights using the slide light technique and **Decolor B**. Lighten to level 8 and then tone with **Framcolor Eclectic 7HCE + 7RDE**.



1a. 1b. 1c.

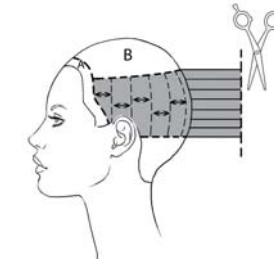
Isolate a 2 cm (¾") thick section along the front hairline. Isolate the crown area.

Trace a line from one mastoid to the other passing through the occipital bone.



2.

Section D – Create a guide at the mandible angle. Using this guide, cut vertical subsections perpendicular to growth and slightly diagonally.



3.

Section C – Using the length at the occipital bone as a guide, cut square vertical subsections perpendicular to growth.



4.

Section A – Comb the hair toward the face and cut utilizing the following reference points: the left cheek bone, the left eyebrow arch, the corner of the right eye.



5a. 5b.

Section B – Trace a central line and comb the hair in natural fall. Slide cut the left side from the mastoid to the chin. Slide cut the right side from the maximum length in back to below the chin.



6a. 6b.

Soften the back of the head with the Sliding Cut technique and signature the entire proposal with blending shears.

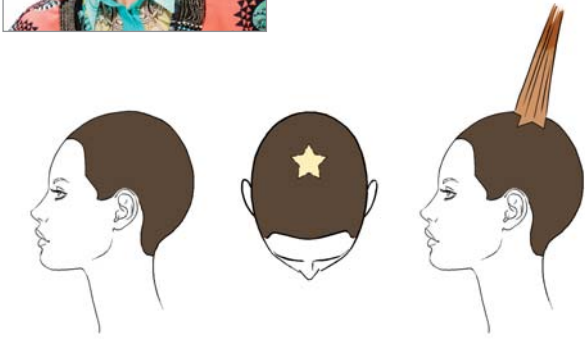


Apply **I.Dentity Curl.Booster** in the crown area and blow dry using the diffuser. Apply **BY Framesi Frozen Glaze** on the remainder smoothing and shaping the locks.



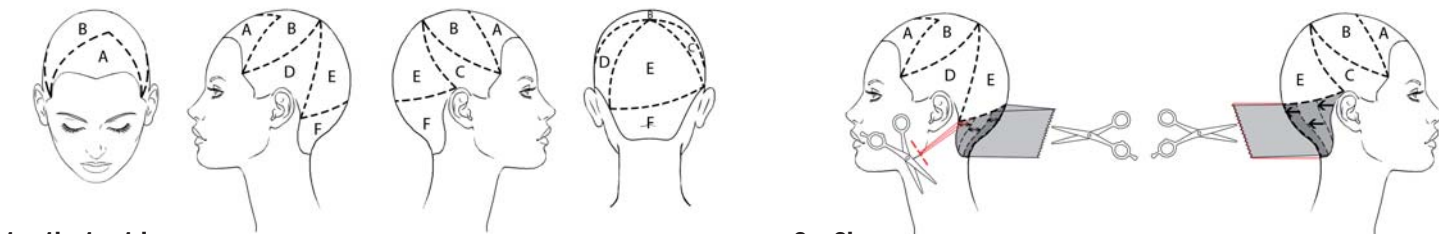
...&more

Proposal #3 woman



- Framcolor 2001 5W + 6NC**
- Decolor B diamond**
- Framcolor Eclectic 8HCE + 9GE**
- Framcolor Eclectic 6HCE + 7AE**

Create a base with **Framcolor 2001 5W + 6NC**. At the vertex trace a star with points 3 cm (1¼") long. Use **Decolor B diamond** and lighten to level 8. Tone the roots and mid shaft with **Framcolor Eclectic 8HCE + 9GE** and the ends with **Framcolor Eclectic 6HCE + 7AE**.

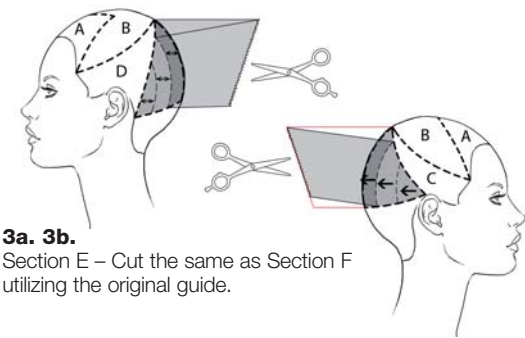


1a. 1b. 1c. 1d.

Isolate a triangle utilizing the following reference points: the corner of the right eyebrow, 1 cm (¼") to the left and in front of the vertex, the corner of the left eyebrow. Trace a line from end of eyebrow to end of eyebrow passing through the center juncture. Trace a line from the center juncture to the left mastoid. Trace a line from the center juncture to the tip of the right ear. Trace a line from the tip of the right ear to the left mastoid passing through the occipital bone.

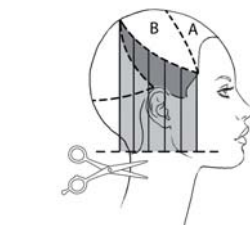
2a. 2b.

Section F – Subdivide the section with a central parting. On the left side create a guide at the mandible angle. Cut diagonal subsections perpendicular to growth to the center of the section. Continue cutting to the right, allowing the guide to travel subsection over subsection.



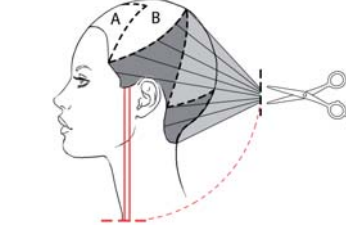
3a. 3b.

Section E – Cut the same as Section F utilizing the original guide.



4.

Section C – Cut square to the length found at the tip of the ear.



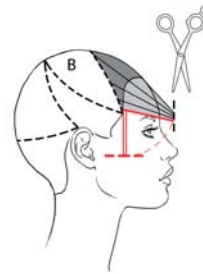
5.

Section D – Create a guide at the clavicle. Transport section D and half of section F to the mastoid and pinch cut square and vertically to the length of the guide.



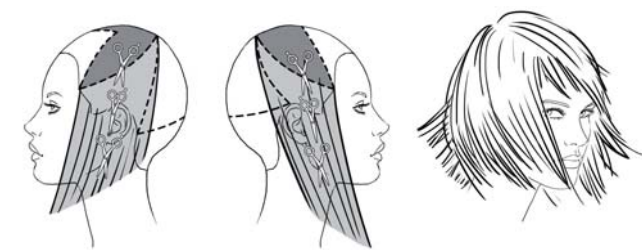
6.

Now signature all the completed sections using the Chipping Cut technique*.



7a. 7b.

Section A – Create a guide at the right cheekbone and pinch cut the entire section square and vertically. Isolate a fringe 1 – 2 cm (½") deep and soften it by point cutting from the corner of the eyebrow on the right to the angle of the eye on the left. Blow dry the hair.

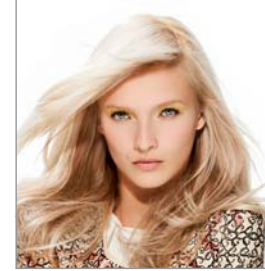


8a. 8b.

Section B – Comb in natural fall and cut using the Open & Close technique* creating a perimeter which is parallel to but longer than the existing one.

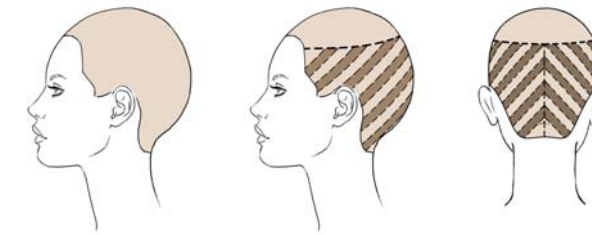


Apply **BY Framesi Sparkling Mousse light** on wet hair and blow dry using a large round brush to add volume at the roots and smoothing the ends. Finish with **Morphosis Argan Oil (Framesi Hair Treatment Line Sublimis Argan Oil)** to have silky and brilliant hair.



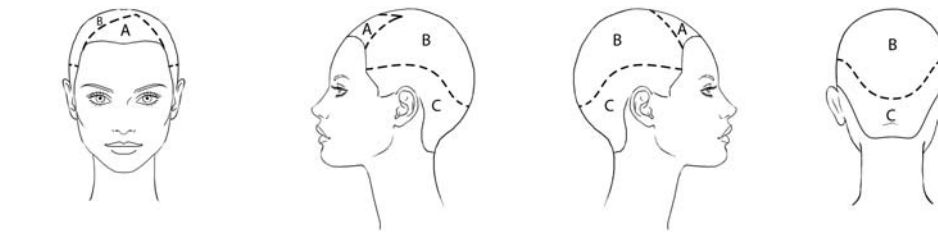
...&more

Proposal #4 woman



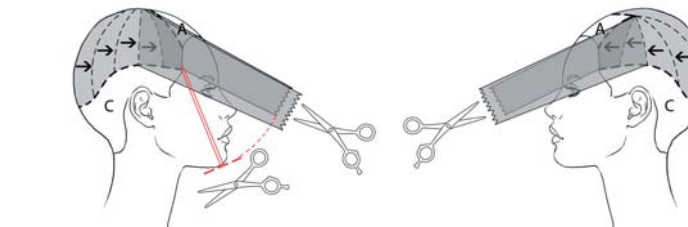
- Framcolor 2001 USA + 9P**
- Framcolor 2001 7KR**

Create a base with **Framcolor 2001 USA + 9P**. Isolate the crown area and subdivide the remaining hair as shown in the diagram. Color alternated diagonal sections with **Framcolor 2001 7KR**.



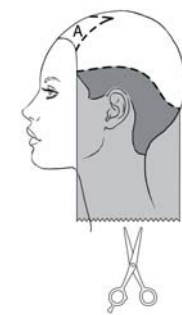
1a. 1b. 1c. 1d.

Isolate a triangle utilizing the following reference points: the corner of the right eyebrow, 2 cm (¾") left of the vertex, the corner of the left eyebrow. Trace a line passing 3 cm (1¼") above the ears and through the occipital bone.



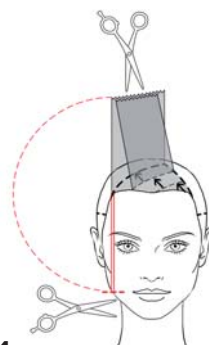
2a. 2b.

Section B – On the right side create a guide at the chin. Subdivide the section in radial partings, transport each subsection toward the nose and point cut diagonally allowing the guide to travel. Cut each subsection 2 cm (¾") longer than the previous one until reaching the center of the section. Now repeat the same on the left side.



3.

Section C – Comb the hair in natural fall and point cut the perimeter square at maximum length.



4.

Section A – Create a guide at the right corner of the mouth. Comb diagonal sections vertically and point cut square allowing the guide to travel.



5.

Now transport all the hair to the point of the front triangle and cut to the found length using the Looping Cut technique.



6.

Signature and soften where necessary using the Sliding Cut and the Energy Advanced Cut techniques*.

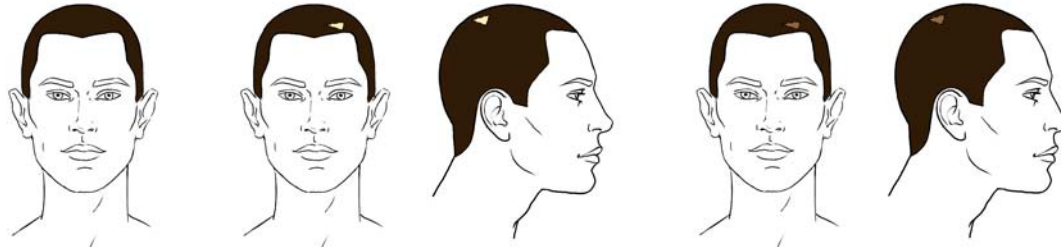


Apply **BY Framesi Sparkling Mousse strong** and blow dry using a large round brush to add volume to the roots. Finish with **BY Framesi Black Lava**.



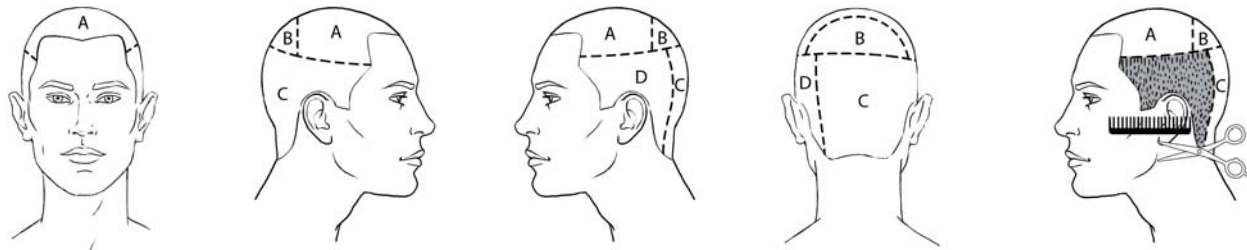
...&more

Proposal #1 man



- Framcolor Eclectic 3NE
- Decolor B cream plus
- Framcolor 2001 7E

Create a base with **Framcolor Eclectic 3NE**. Isolate two small triangles (2 – 3 cm – about 1") as shown in the diagram. Lighten to level 8 with **Decolor B cream plus** and tone with **Framcolor 2001 7E**.

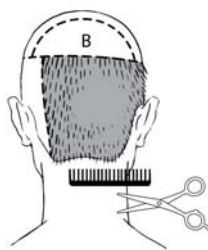


1a. 1b. 1c. 1d.

Isolate the crown area keeping the line 1 cm (½") lower on the right. Trace a line passing through the center juncture. Trace a vertical line 4 cm (1½") behind the left mastoid.

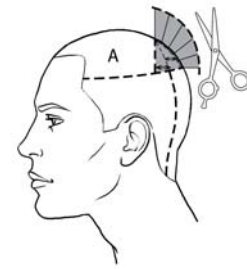
2.

Section D – Cut scissor over comb from 1 mm to 1 cm (1/10" to ½").



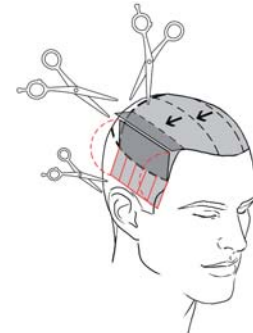
3.

Section C - Cut scissor over comb from 1 to 3 cm and remove any strong disconnection between section C and D.



4.

Section B – Subdivide the section with radial partings and cut round from the length found at the crown to 5 – 6 cm (1¾") allowing the guide to travel.



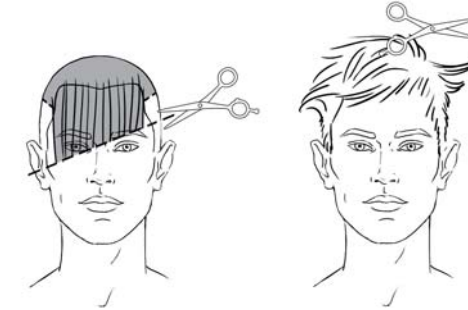
5.

Section A – Starting from the right side, cut a subsection 2 cm (¾") longer than the hair in the section below, then point cut the entire section square allowing the guide to travel.



6.

Transport section A to the center juncture and reduce any disconnection.



7.

Comb section A toward the face and cut from the left eyebrow to below the corner of the right eye. Signature the proposal with the Chipping Cut technique*.



Shape the bang with **I.Dentity X.Factor**.



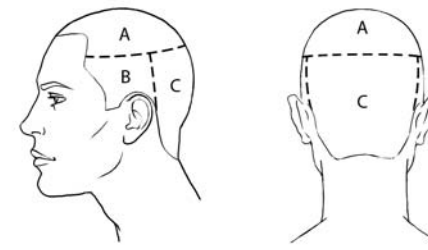
...&more

Proposal #2 man



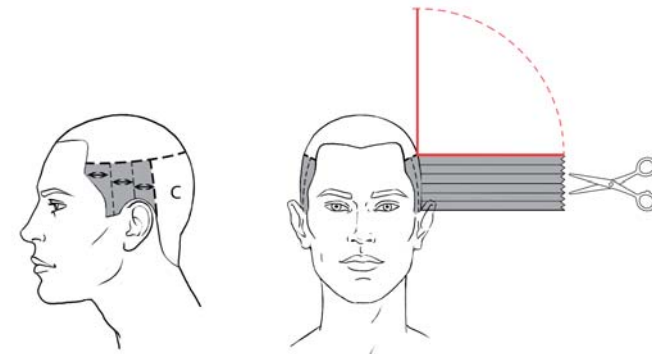
- Framcolor Eclectic 5-IN
- Decolor B cream plus

Create a base with **Framcolor Eclectic 5-IN**. Using the spatula and **Decolor B cream plus**, create random highlights throughout the head.



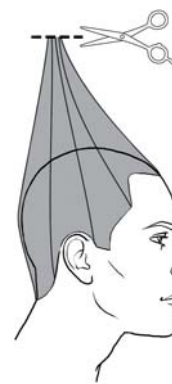
1a. 1b.

Isolate the crown area. On both sides, trace a vertical line to the mastoid and isolate the remainder hair.



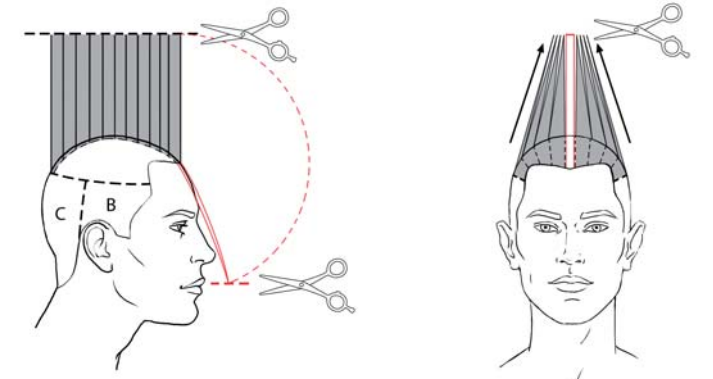
3a. 3b.

Section B – Create vertical partings and cut perpendicularly to growth to the length found at the perimeter of section A.



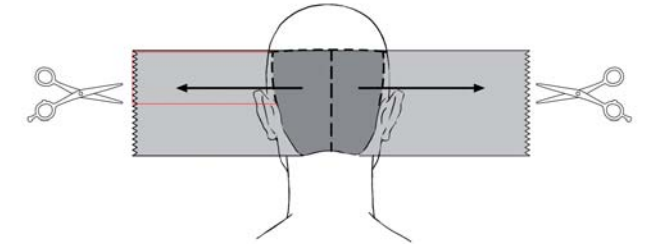
5.

Transport the entire head to the center juncture and remove any excess.



2a. 2b.

Section A – Create a guide in the center of the crown by transporting a small section to the mouth and then cutting a central subsection square and perpendicular to growth. Now pinch cut the entire section to the guide.



4.

Section C – Trace a central line. Transport each side parallel to the mastoid and point cut at the found length.



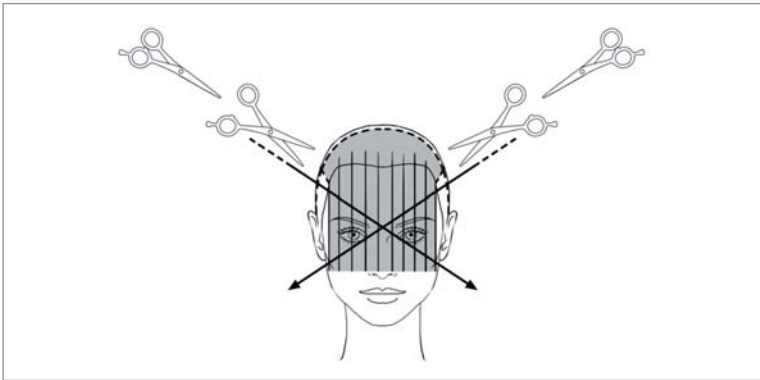
6.

Comb the hair in natural fall and signature the proposal to enhance facial features.

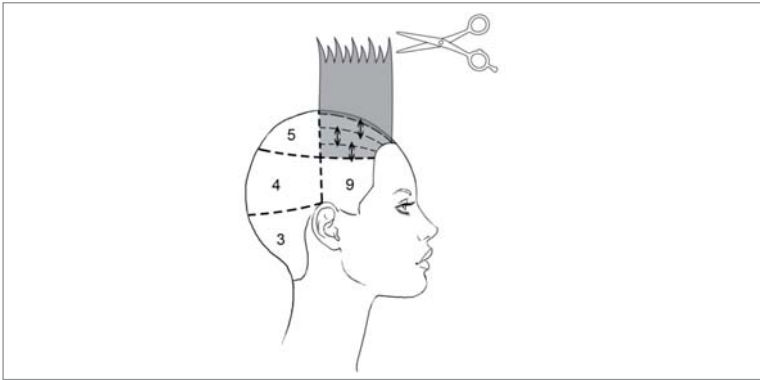


Apply **I.Dentity X.Alt** on wet hair to enhance the curls and blow dry using the diffuser.

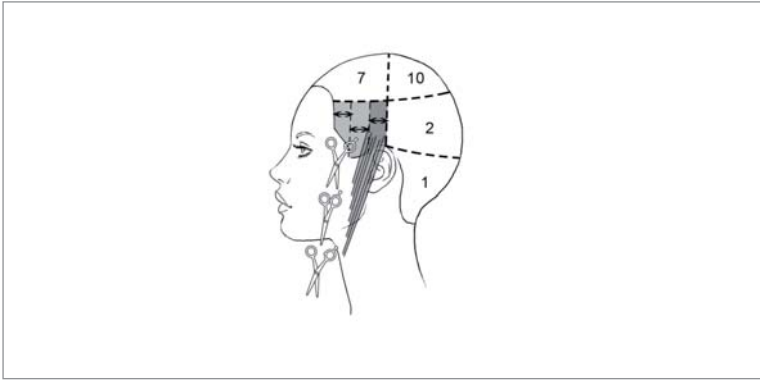
CUTTING TECHNIQUES



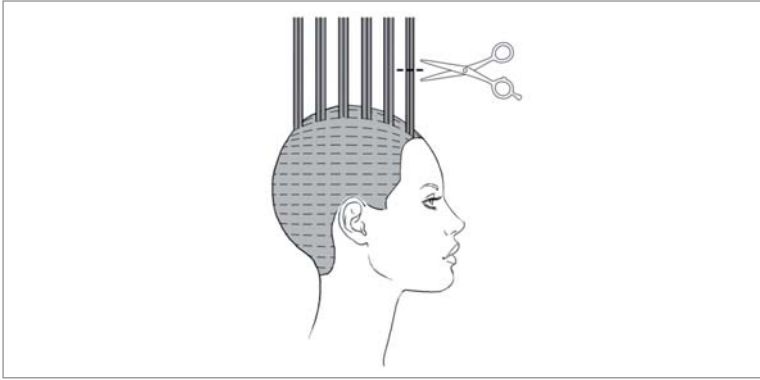
***CROSSING CUT technique**
Comb the hair toward the face. Starting just below the parietal ridge soften the bang by “biting” it with scissors from right to left until reaching the maximum length. Repeat from left to right creating a versatile bang that moves softly to either side.









***CHIPPING CUT technique**
Keep the section between your fingers and move the scissors softly outwards.



***OPEN&CLOSE technique**
Keeping the section between two fingers, “bite” it lightly with scissors at regular distance.



***ENERGY ADVANCED CUT technique**
Take 1 cm (½”) wide rectangular sections and separate the hair as if preparing for highlights. Cut the sections in the middle of their length obtaining a result that alternates long and short strands.

	FRAMCOLOR 2001	FRAMCOLOR ECLECTIC	FRAMCOLOR FUTURA	FRAMCOLOR GLAMOUR	Contrasts
	8TRP + 9E ml/cc 40 + 20	8RDE + 9GE ml/cc 40 + 20	8R + 8DS ml/cc 40 + 20	8.4 + 9.33 ml/cc 40 + 20	Framcolor 2001 6HR + 6VM
#1 WOMAN					
	4W + 5NC ml/cc 40 + 20	4HCE ml/cc 60	4XN + 5C ml/cc 40 + 20	4.64 ml/cc 60	Decolor B Framcolor Eclectic 7HCE + 7RDE
#2 WOMAN					
	5W + 6NC ml/cc 40 + 20	5HCE ml/cc 60	5XN + 6C ml/cc 40 + 20	5.64 ml/cc 60	Decolor B diamond Framcolor Eclectic 8HCE + 9GE Framcolor Eclectic 6HCE + 7AE
#3 WOMAN					
	USA + 9P ml/cc 40 + 20	=	SSA + 10A ml/cc 40 + 20	12.62 ml/cc 60	Framcolor 2001 7KR
#4 WOMAN					
	3NP ml/cc 60	3NE ml/cc 60	3N ml/cc 60	3 ml/cc 60	Decolor B cream plus Framcolor 2001 7E
#1 MAN					
	5NP ml/cc 60	5-IN ml/cc 60	5N ml/cc 60	5 ml/cc 60	Decolor B cream plus
#2 MAN					

spring
summer
collection
2013

General Management
F. Franchina, P. Caldera

Social-Economical Analysis
C.I.M.F. Coordinamento
Informazioni di Mercato Framesi

Framesi Research Center
V. Ciampitti, F. D'Ambrosio, R. Settino

Medical-Scientific Aspects
I. Sironi

Copywriter
P. Annovazzi

Trends Research
Annabella Coiro, Cristina Milanese

Make-up
S. Dell'Orto

Hair Stylists Italian Style Framesi
Tiziana Gualdi, Sabrina Arvizzigno,
Eleonora Bellani, Maria Benevieri,
Oscar Brolis, Filippo Ciccotosto,
Luigi Curci, Michele Curci,
Giovanni Damiani, Angelo Di Paola,
Thomas Fenech, Fabio Finazzi,
Luca Gennari, Carmen La Rosa,
Stefano Lenzi, Stefano Liggia,
Silvio Marcandalli, Simonetta Masiero,
Mario Massaro, Leonardo Minelli,
Marina Monitillo, Giuseppe Patti,
Romano Peli, Elena Petrini,
Massimiliano Piazza, Gabriele Rapone,
Davide Rosatti, Massimo Sarasini,
Antonio Sciancalepore, Simona Stassi

Hair Stylists Italian Style Energy
Gianni Loda, Marcella Bifulco,
Sandra Bucalossi,
Pino Di Tella, Luigi Guerretta,
Maura Mezzapelle, Monica Odorizzi,
Luca Pudda, Andrea Savegnago,
Giuseppe Spina, Nicola Valzania

Special thanks to
Boyd Parris
Creative Director
Framesi North America

Margherita Chiarizia, Raffaele Ruffilli
Creative Consultants