

STRIKE 4

framesi MILAN

FRAMCOLOR[®]
BOLD

[HCDP TECHNOLOGY]
HIGH CONCENTRATION DIRECT PIGMENTS

framesi MILAN

STRIKE 4

by PASSION4FASHION

4

steps to change your color!

Reduce processing time from 20 minutes to 20 seconds!

INSTRUCTIONS:



1
PLACE

Step 1:
PLACE desired section in
framesi **STRIKE4** flat iron
processing sheet



2
APPLY

Step 2:
APPLY
desired color
(e.g. FRAMCOLOR **BOLD**)



3
FOLD & CLIP

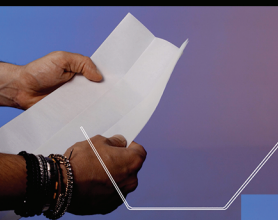
FOLD & CLIP

Step 3:
FOLD & CLIP **STRIKE4** processing
sheet



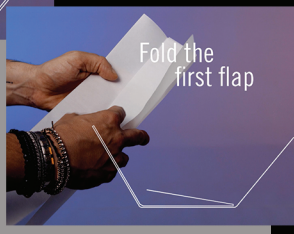
4
FLAT IRON

Step 4:
FLAT IRON at 340°F - 375°
(170°C - 190°C),
tap and slide with a light touch



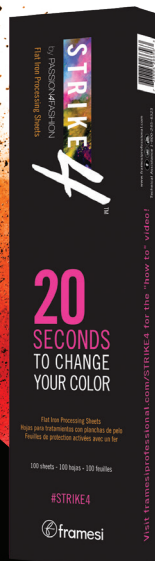
FOLDING INSTRUCTIONS:

Unfold **STRIKE4**. Fold
only the first flap,
resulting in 3 layers on
each side to prepare to
place the section of hair.



Fold the
first flap

DIRECT PIGMENTS PROCESSING	PRELIGHTEN/ BLEACH	PROCESSING/ COLOR	TOTAL PROCESSING
Traditional bleach/ processing with foils	40 minutes	20 minutes	60 minutes
STRIKE4 with FRAMCOLOR BOLD	40 minutes	20 SECONDS!	40 minutes



+



FRAMCOLOR²⁰⁰¹
LIGHT & SHINE

ONE STEP LIFT AND DEPOSIT PERMANENT COLOR	PRELIGHTEN/ BLEACH	PROCESSING/ COLOR	TOTAL PROCESSING
Traditional bleach/ processing with foils	20-40 minutes	20-40 minutes	40-80 minutes
STRIKE4 with FRAMCOLOR LIGHT&SHINE		20 SECONDS!	20 SECONDS!

*Use framesi FRAMCOLOR BOLD or framesi oxidative pigments for optimal results

framesi MILAN

FLAT IRON PROCESSING SHEETS

20 SECONDS TO CHANGE YOUR COLOR

#STRIKE4



Instructions and Techniques

**PROCESS FRAMESI FRAMCOLOR BOLD
DIRECT PIGMENTS AND FRAMESI OXIDATIVE
PIGMENTS IN 20 SECONDS!**

- Enhance color melts
- Peekaboo/accents piece
- Add "shine lines" to mid-shaft
- Add signature/custom touch
- Add dimension and texture
- Color introduction
- Break up base color
- Color correction with control

Visit framesiprofessional.com/STRIKE4 to view the "how to" video!

Visit framesiprofessional.com/STRIKE4 to view the "how to" video!

Visit framesiprofessional.com/STRIKE4 to view the "how to" video!

Technique 1 Lighting Strikes

(Face Framing Highlights)

Use framesi STRIKE4 and FRAMCOLOR **BOLD** to create dimensional face-framing highlights in seconds!



BASE Formula:

framesi FRAMCOLOR Eclectic CARE 5.6 (Intense Violet) + 6.12 (Cool Dark Blonde)

LIGHTING STRIKES Formula: FRAMCOLOR **BOLD** PINK and ORCHID (applied to level 8 prelightened hair)

How-To:

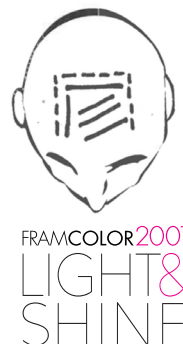
1. Part the hair from the top of the left ear, through the vertex, and connect to the top of the right ear.
 - a. Take the back section and clip up.
2. Part the front section at its natural fall.
3. Take angled partings starting at the temples and following the hair line around the face.*
4. Place the STRIKE4 and apply the FRAMCOLOR **BOLD**
5. Heat the STRIKE4 using a flat iron.
6. Continue the process following along the hairline and keeping the highlights close to the face.
7. After the last STRIKE4 has been placed and processed, rinse in cool water.
8. Use framesi COLOR METHOD MASK to ensure beautiful, longer-lasting color.
9. Style as desired.

* Determining the thickness and the amount of highlights should be discussed during client consultation - thicker slices and less sections will provide a bold and bright look while smaller slices and more sections will create a subtle and soft appearance.



Technique 2 Dimensional Strikes (Highlights)

framesi STRIKE4 and FRAMCOLOR 2001 LIGHT&SHINE have taken the stylist tried-and-true highlights to the next level! With framesi STRIKE4 and FRAMCOLOR LIGHT&SHINE you can efficiently and effectively change a client's whole look!



Single-process color and highlight in 35 minutes

BASE Formula:

framesi FRAMCOLOR Eclectic CARE 4.6 (Deep Violet)

STRIKES/HIGHLIGHT Formula: FRAMCOLOR 2001 LIGHT&SHINE 7.44 (Intense Copper)

Alternate STRIKES /HIGHLIGHT Formula:

Equal parts FRAMCOLOR **BOLD** ORANGE and RED (applied to level 7 prelightened hair)

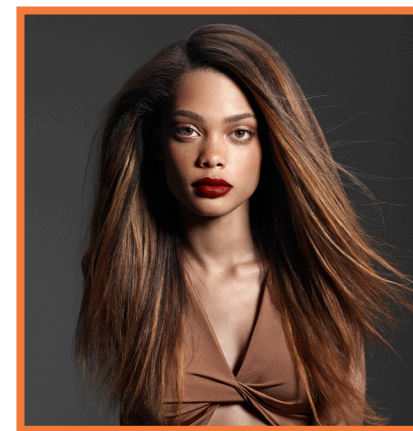
How-To:

1. Apply BASE formula to regrowth.
2. Set timer for 35-45 minutes depending on gray coverage.
3. While the BASE formula sits on the regrowth, create the top parting.
 - a. Create a front rectangle section starting at the left and right mid eyebrow to the vertex.
4. Take 5 subsections (1/2" partings):
 - a. Left Eyebrow Arch
 - b. The Vertex
 - c. 3 diagonal sections starting at the right eyebrow
5. Apply the STRIKES/HIGHLIGHT formula.
6. Work towards the apex, leaving sections of hair between the STRIKE4.
7. Once you have reached the apex you can apply the BASE formula to the remaining sections.
8. Once the BASE formula has finished processing, rinse the hair and wash with framesi COLOR METHOD System to ensure longevity of color.
9. Style as desired.



Technique 3 Strobe Lights

Strobe Lights provide subtle or bold flashes of color, giving the hair movement and dimension.



BASE Formula:

framesi FRAMCOLOR 2001 1NB (Blue Black) + 4EXN (Extreme Natural Medium Chestnut)

STROBE LIGHTS Formula:

FRAMCOLOR 2001 LIGHT&SHINE 7.46 (Amber)

How-To:

1. Part the hair in circular sections starting at the crown of the head and working down.*
2. Apply the BASE formula root to end in the bottom section.
3. In the next section up, apply the BASE formula to the regrowth only.
4. In the third section, apply the BASE formula root to end.
5. Repeat step 3.
6. In the final section (top), apply the BASE formula root to end.
7. Begin timer (35-45 minutes depending on gray coverage).
8. Take the section from Step 3, and apply STROBE LIGHT formula using STRIKE4.
9. Once that section is complete, repeat the same steps for the section in Step 5.
10. You can rinse once the BASE formula has fully processed.
11. Use framesi COLOR METHOD System to ensure longevity of the color.
12. Style as desired.

*Number of sections will be determined by head shape and size of sections

