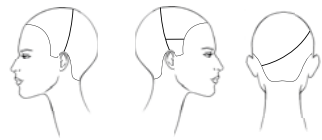
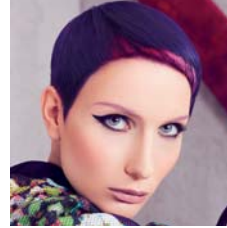




step by step

spring
summer
collection
2014

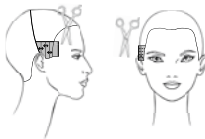
 framesi



1. Trace a line from ear to ear passing through the center juncture. On the right side trace a line from the end of the eyebrow to the previous parting. From this point, trace a curved line to the left mastoid passing through the occipital bone.



2. Create a guide in the front by cutting along the hairline to the left sideburn following the flats and curves of the head. Proceed cutting parallel subsections combing the hair forward in natural fall.



3. Cut the right side section to the length of 1 cm (1/4") taking vertical partings perpendicular to growth.



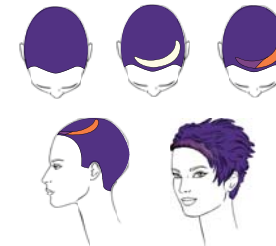
4. Comb the back section in natural fall and cut the entire perimeter along the hairline. Now comb the entire section to the left side and cut at the hairline. Then comb the entire section to the right side and cut at the hairline.



5. Now cut the section between the center juncture and the occipital bone. Taking diagonal partings, cut the first subsection to the length found below, then cut subsection over subsection allowing the guide to travel.



6. Blow dry the hair. Taper the back section by cutting scissor over comb. Lighten the entire volume and signature the perimeter using blending shears.



1. Decolorize the entire head to level 9 with **Decolor B diamond**.
2. Isolate a wing-shaped front section, as shown in the diagram, about 1 cm (1/4") from the hairline.
3. Subdivide the section diagonally. Tone the left part with **Framcolor 2001 9P + 1/2 ribbon inch of 620**. Tone the right part with **Framcolor 2001 610**.
4. Tone the remaining hair with **Framcolor 2001 5-IV + 620** (30 g/cc + 30 g/cc).
5. Stabilize and create long lasting color with **FRAMESI COLOR METHOD Color Lock System**.

TO CREATE THIS COLOR
 YOU MAY ALSO USE:

FRAMCOLOR GLAMOUR	FRAMCOLOR ECLECTIC	FRAMCOLOR FUTURA
5.66 + 6.66 (30 g/cc + 30 g/cc)	4CVE + 6VE (30 g/cc + 30 g/cc)	4BV (60 g/cc)
contrasts Decolor B diamond 9.62 + 6.66 7.55	contrasts Decolor B diamond 9PE + 6VE 7RE	contrasts Decolor B diamond Use F2001 or Glamour or Eclectic

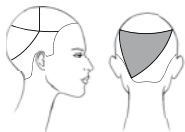
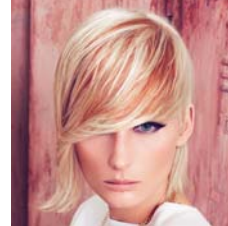
SUGGESTED PROFESSIONAL
 TREATMENT FOR SUPERIOR
 SHINE AND CONDITIONING:

Framcolor OPTICS Blueberry Violet

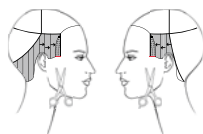
SUGGESTED HOME TREATMENT: **Morphosis COLOR PROTECT**

STYLING

Apply **I.Dentity Hair.Force** and blow dry the hair in natural fall using a flat brush and respecting the shape of the cut. Add shine with **BY Pearl Shiner**.



1. Isolate the crown and then sub divide the section with a line passing through the vertex and traveling from both sides to the left corner of the nape as in the diagram.



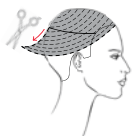
2. Cut the side sections square making vertical partings. Create a 1 cm (1/4") guide at the hairline and then continue cutting subsection over subsection allowing the guide to travel.



3. Comb the back section of the crown toward the right side and pinch cut square and horizontally.



4. Comb the front section of the crown to the back left side and pinch cut diagonally to a length of 10 cm (4").



5. Now comb the entire crown section to the right and cut from the length of the section below to maximum length using the Slide Cutting technique.



6. Comb the back section onto the right separation line and pinch cut to the length of the side section.



7. Lighten the entire volume using the Advanced Energy Scratching technique*.

* Weave the hair as for the Advanced Energy Cutting Technique taking 1/2 cm (1/8") thick sections with moderate tension and scratch the lower sections using the razor.



1. Decolorize the entire head to a level 10 with **Decolor B cream plus**.
2. In the crown area isolate a section as in the diagram and tone it with **Framcolor Glamour 8.4 + 8.34**.
3. Tone the remaining hair with **Framcolor Glamour 10.62**.
4. Stabilize and create long lasting color with **FRAMESI COLOR METHOD Color Lock System**.

TO CREATE THIS COLOR
 YOU MAY ALSO USE:

FRAMCOLOR 2001	FRAMCOLOR ECLECTIC	FRAMCOLOR FUTURA
Decolor B cream plus 9P + 11A	Decolor B cream plus 9PE + 9CT	Decolor B cream plus 10A
contrasts 8TRP + 8ER	contrasts 8RDE + 8DE	contrasts 8R + 8DS

SUGGESTED PROFESSIONAL
 TREATMENT FOR SUPERIOR
 SHINE AND CONDITIONING:

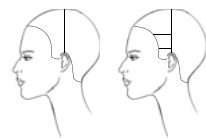
Framcolor OPTICS Creamy White

SUGGESTED HOME TREATMENT:

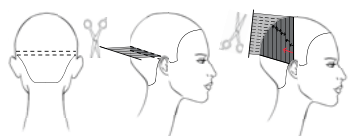
Morphosis REPAIR

STYLING

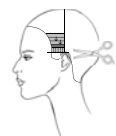
Apply **Color Lover Hair Primer 11** on wet hair. Blow dry in natural fall slightly blowing the roots and finish the ends with the flat iron while protecting them with **I.Dentity Protect.it**. Spray **BY Mist Hair Spray light** for soft hold.



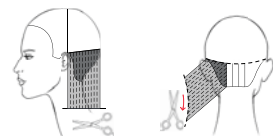
1. Trace a line from ear to ear passing through the vertex.
On the left side trace two horizontal lines; one from the corner of the eye and one just below the parietal ridge.



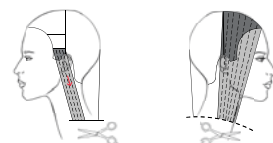
2. In the back create a 1 cm (1/4") wide guide section from ear to ear passing through the occipital bone and pinch cut to the length of 10 cm (4").
Cut the upper section slightly diagonally from the guide to the vertex making vertical partings. Take the side subsections a little bit backwards to have longer hair on the mastoids.



3. Now cut the left side.
Subdivide the upper section taking horizontal partings then cutting from the length found at the tip of the ear and allowing the guide to travel.



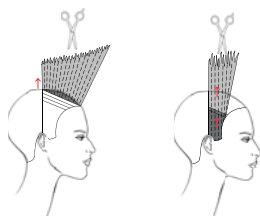
4. Comb the lower back section in natural fall and cut square to 13 cm (5").
Connect the guide section to the perimeter using the Sliding Cut technique while respecting the perimeter.



5. Cut the left sideburn to the perimeter length combing the hair slightly backwards. Comb the right side in natural fall and cut square connecting to the back perimeter.



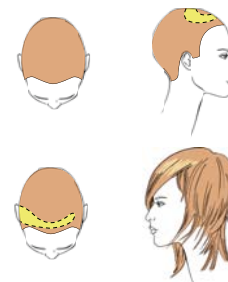
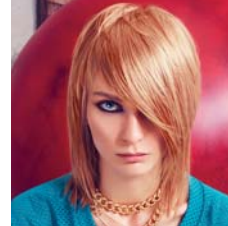
6. Connect the right side of the guide section to the square perimeter of the fringe using the Sliding Cut technique.



7. Just inside the crown area connect the length at the vertex to the length at the front hairline making vertical partings and using the Point Cut technique.
Take the connecting section onto the right sideburn and cut to the length of the last subsection of the previous step using the Chipping Cut technique.



8. Soften the entire volume using blending shears.



1. On the top of the head isolate a tennis racket-shaped section with the grip above the left ear. Decolorize with **Decolor B no dust** to level 9.
2. Color the remaining hair with **Framcolor Glamour 8.34 + 8.36** (30 g/cc + 30 g/cc).
3. Tone the racket shape with **Framcolor Glamour 9.36**.
4. Stabilize and create long lasting color with **FRAMESI COLOR METHOD Color Lock System**.

TO CREATE THIS COLOR
 YOU MAY ALSO USE:

FRAMCOLOR 2001	FRAMCOLOR ECLECTIC	FRAMCOLOR FUTURA
8ER + 8/SB (30 g/cc + 30 g/cc)	8RDE + 8DE (30 g/cc + 30 g/cc)	8R + 8D (30 g/cc + 30 g/cc)
contrasts Decolor B no dust 9/SB	contrasts Decolor B no dust 9HCE	contrasts Decolor B no dust 9XN

SUGGESTED PROFESSIONAL
 TREATMENT FOR SUPERIOR
 SHINE AND CONDITIONING:

Framcolor OPTICS Creamy White and Light Honey Blonde

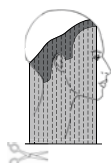
SUGGESTED HOME TREATMENT: **Morphosis SUBLIMIS OIL**

STYLING

Apply **I.Dentity Look@Me** to give the hair volume and blow dry with the diffuser.
 Spray **I.Dentity Beach Matte Spray** to define the sections with a natural look.



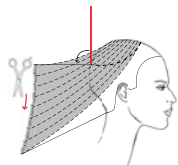
1. Isolate a section around the head tracing a line 2 cm ($\frac{3}{4}$ ") from the front hairline and 5 cm (2") from the back hairline. Isolate the rest of hair.



2. Comb the hairline section in natural fall and cut square to the length of 25 cm (10").



3. In the top section make an oval subsection passing 7 cm ($2\frac{3}{4}$ ") from the front hairline, 8 cm ($3\frac{1}{4}$ ") from the tip of the ears and 10 cm (4") from the back hairline. Lift the hair vertically and pinch cut to the length of 18 cm ($7\frac{1}{4}$ ").



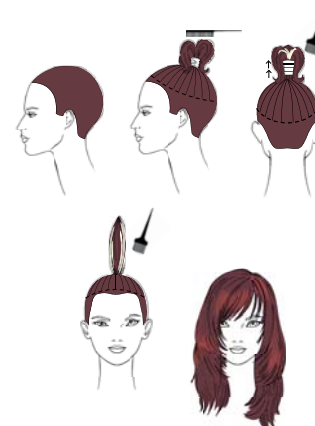
4. Comb the oval in natural fall and connect to the maximum length with the Sliding Cut technique while respecting the perimeter.



5. "Open" the fringe on the left eye twisting the hair and slide cutting at the corner of the mouth.



6. Soften the ends using blending shears.



1. Create a base with **Framcolor 2001 4W + 5HR** (30 g/cc + 30 g/cc).
2. Isolate a round section passing 1 cm from the front hairline, 3 cm ($1\frac{1}{4}$ ") above the ears and 2 cm ($\frac{3}{4}$ ") above the occipital bone. Create a ponytail at the vertex and back comb slightly.
3. Hold the base of the ponytail in your fist and allow it to open naturally. With the edge of your brush apply **Decolor B diamond** to the inside of the ponytail while gently moving your fist to the top of it.
4. Now delicately paint the outside of the ponytail lightly covering the surface.
5. Lift to level 7 and then toner with **Framcolor 2001 6HR + 610**.
6. Stabilize and create long lasting color with **FRAMESI COLOR METHOD Color Lock System**.

TO CREATE THIS COLOR
 YOU MAY ALSO USE:

FRAMCOLOR GLAMOUR	FRAMCOLOR ECLECTIC	FRAMCOLOR FUTURA
5.56 + 4.46 (30 g/cc + 30 g/cc)	4HCE + 6RFE (30 g/cc + 30 g/cc)	4XN + 6RS (30 g/cc + 30 g/cc)
contrasts Decolor B diamond 6.56 + 7.55	contrasts Decolor B diamond 6RFE + 7RE	contrasts Decolor B diamond 7RS

SUGGESTED PROFESSIONAL
 TREATMENT FOR SUPERIOR
 SHINE AND CONDITIONING:

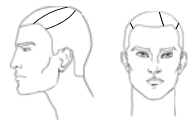
Framcolor OPTICS Strawberry Red

SUGGESTED HOME TREATMENT:

Morphosis COLOR PROTECT

STYLING

Apply **I.Dentity Curl.Booster** and blow dry the hair with the diffuser. When the hair is half dry, twist thin sections and clip them. Finish blow drying and give hold with **BY Hair Spray Color Protection**. For a vintage effect use **I.Dentity Beah matte Spray**.



1. Trace the crown line.
 Inside the crown area trace a diagonal line from the back central point to the left eyebrow arch. Isolate the two sections obtained.



2. Cut the bottom section to the length of 9 mm (1/2") leaving the length around the crown area.



3. Cut the top left section palm up - subsection over subsection - to the length found at the crown line.



4. Using the same technique, but turning your palm even more upwards, cut the right top section leaving the hair a little longer in the front.



5. Comb the hair toward the face and sculpt the two sections emphasizing the asymmetry.



1. Color the proposal with **Framcolor Glamour 4**.
2. Stabilize and create long lasting color with **FRAMESI COLOR METHOD Color Lock System**

TO CREATE THIS COLOR
 YOU MAY ALSO USE:

FRAMCOLOR 2001

4EXN

FRAMCOLOR ECLECTIC

5-IN

FRAMCOLOR FUTURA

4N

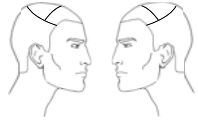
SUGGESTED PROFESSIONAL
 TREATMENT FOR SUPERIOR
 SHINE AND CONDITIONING:

Framcolor OPTICS Light Chocolate Brown

SUGGESTED HOME TREATMENT: **Morphosis DENSIFYING**

STYLING

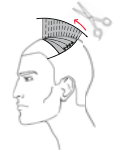
Apply **I.Dentity Multi-Shape Wax** and blow dry naturally respecting the shape of the cut.
 Mold the fringe using the flat iron and **I.Dentity Tuff.Hold**.



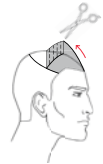
1. Trace the crown line.
Isolate a 6 cm (2¼") wide front section.



2. Cut the lower section from 1 to 3 cm (¼" to 1¼" below the crown line).



3. Cut the back top section from 3 to 6 cm (1¼" to 2¼") making radial subsections perpendicular to growth.



4. Take the front top section onto the parting line and cut to the found length of 6 cm (2¼").



5. Blow dry the hair. Comb the fringe toward the face and cut to mid forehead. Then cut free hand utilizing the Balza* technique.

* Keep the sections tense and touch the surface horizontally with the razor.
Create different Balzas in a checked pattern.



1. Decolorize the entire hair to a level 9 with **Decolor B cream plus**.
2. Tone with **Framcolor 2001 650** (½ ribbon inch) + **7P + 9P**.
3. Stabilize and create long lasting color with **FRAMESI COLOR METHOD Color Lock System**.

TO CREATE THIS COLOR
YOU MAY ALSO USE:

FRAMCOLOR ECLECTIC

**Decolor B cream plus
7SE + 9PE**

FRAMCOLOR FUTURA

**Decolor B cream plus
8A**

SUGGESTED PROFESSIONAL
TREATMENT FOR SUPERIOR
SHINE AND CONDITIONING:

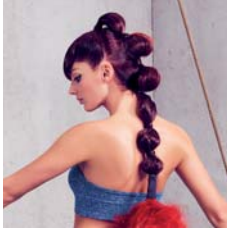
Framcolor OPTICS Creamy White

SUGGESTED HOME TREATMENT:

Morphosis DENSIFYING

STYLING

Blow dry in natural fall with a flat brush.
Apply **I.Dentity Power.Up Wax** to emphasize the Balze technique.



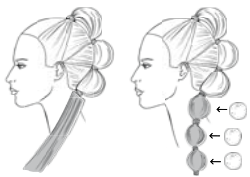
1. Apply **BY Sparkling Mousse Flexible Hold** to add volume and body. Isolate a front triangle joining the middle of the left eyebrow, the vertex and the end of the right eyebrow.



2. Spray **BY Black Lava Hair Spray Mega Hold** and make a ponytail with the hair in the front section 2 cm (3/4") behind the vertex and cover the rubber band with a weft of hair.



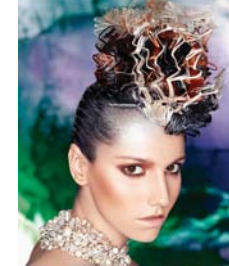
3. Now make another ponytail 6 cm (2 1/2") below and another one at the nape, always creating a round soft volume.



4. Apply a long extension on the nape and put a chignon ball each 6 cm (2 1/2").



5. At the end apply another extension in a contrasting color and secure it using a colorful ribbon or piece a fabric. Give hold to the proposal with **BY Mist Hair Spray strong** and add shine with **BY Pearl Shiner**.



1. Prepare extensions 7 – 10 cm (2 3/4 - 4") long using:

- Decolor B to level 9
- Framcolor 2001 7W + 7G + 7TRP
- Framcolor 2001 4W

Apply **I.Dentity Self.Control** to the extensions and press them in a zigzag shape using a foil and a flat iron.

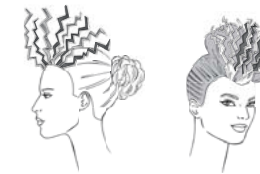
Spray **BY Mist Hair Spray strong + BY Pearl Shiner** on the hair and create a ponytail between the occipital bone and the crown area.



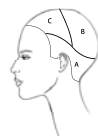
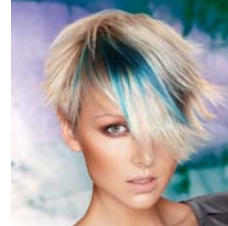
2. Subdivide the ponytail into three parts and apply **I.Dentity X.Factor**, twist each section and make a bun.



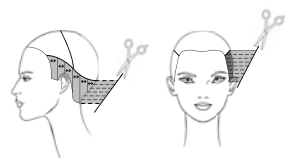
3. Apply **I.Dentity Self.Control** on the right side and, using the tail comb, define some horizontal lines.



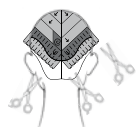
4. Clip the extensions in the front of the hair by alternating the colors and create a considerable volume.



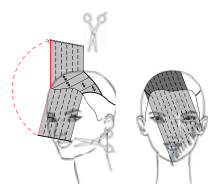
1. On both sides trace a horizontal line from temple to mastoid and then continuing diagonally to the occipital bone.
In the top section trace a line from mastoid to mastoid passing through the vertex.



2. Section A - On both sides, starting from the sideburn, take vertical partings perpendicular to growth and cut diagonally from 2 to 4 cm ($\frac{3}{4}$ " to $1\frac{1}{2}$ ").



3. Section B - Trace a central line. On the right side take diagonal partings and cut the first one 2 cm ($\frac{3}{4}$ ") longer than the length found at the separation line of section A. Proceed cutting section over section allowing the guide to travel.
On the left side isolate a square section 2-3 cm ($\frac{3}{4}$ " - $1\frac{1}{4}$ ") wide above the occipital. Take diagonal partings and cut the first one 2 cm ($\frac{3}{4}$ ") longer than the length found at the separation line of section A. Proceed cutting section over section allowing the guide to travel then texturize the isolated section.

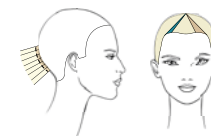


4. Section C - Comb the hair toward the face and create a square perimeter to the corners of the mouth.
Now take vertical partings perpendicular to growth and cut diagonally from the vertex to the perimeter.
Comb the hair again toward the face and slide cut from the left cheekbone to maximum length.



5. Refine and lighten the entire volume utilizing the Matita* technique.

*Creating moderate tension on small sections use the razor as if it were a pencil and take short, light strokes on the ends to create texture.



1. Color the roots with **Framcolor 2001 9/SB**.
2. Decolorize the mid shafts and ends with **Decolor B no dust** to level 10.
3. At the end of the process create two asymmetric triangles as shown in the diagram.
Tone the right triangle with **Framcolor 2001 640** (1 part) + **10PB** (3 parts) and the left one with **Framcolor 2001 7/SB**.
4. Tone the remaining hair with **Framcolor Glamour 10.62**.
5. Stabilize and create long lasting color with **FRAMESI COLOR METHOD Color Lock System**.

TO CREATE THIS COLOR
 YOU MAY ALSO USE:

FRAMCOLOR 2001	FRAMCOLOR GLAMOUR
9/SB	9.36
contrasts	contrasts
Decolor B no dust	Decolor B no dust
640 + 10PB	Use F2001
7/SB	7.36
11A + 9P	10.62

FRAMCOLOR ECLECTIC	FRAMCOLOR FUTURA
9HCE	9XN
contrasts	contrasts
Decolor B no dust	Decolor B no dust
Use F2001	Use F2001
7HCE + 7NE	7XN + 7C
9PE + 9CT	10A

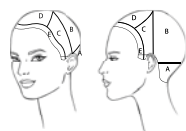
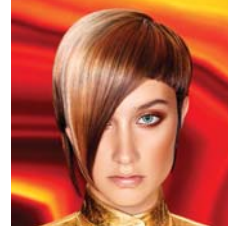
SUGGESTED PROFESSIONAL
 TREATMENT FOR SUPERIOR
 SHINE AND CONDITIONING:

Framcolor OPTICS Creamy White

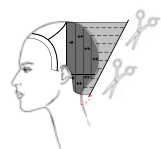
SUGGESTED HOME TREATMENT: **Morphosis REPAIR**

STYLING

Apply **Color Lover Primer 11** on wet hair. Blow dry with your hands counter directing the hair up. Use the flat iron and **I.Dentity Protect.it** to straighten and shape the ends. Finish with **BY Black Lava Hair Spray**.



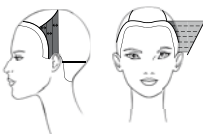
1. Along the front hairline isolate a section 2 cm ($\frac{3}{4}$ " wide (section E). Isolate a horseshoe shaped section joining the eyebrow arches and the vertex (section D). Trace a line from tip of the ear to tip of the ear passing through the vertex (section C). Trace a line from mid ear to mid ear passing through the occipital bone (sections A and B). Isolate the left sideburn.



2. Section A – Cut a guide section at mid neck. Take vertical partings perpendicular to growth and cut diagonally from 3 to 2 cm ($1\frac{1}{4}$ " to $\frac{3}{4}$ " keeping inside the mastoids. Section B – Using the length at the occipital as a reference, take vertical partings perpendicular to growth and cut diagonally keeping inside the mastoids.



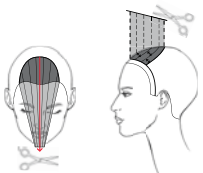
3. Comb the front section in natural fall. Create a very short fringe starting from the left end of the eyebrow, cut round to the right ear lobe at a length of 2 cm ($\frac{3}{4}$ "). Now start from the end of the left eyebrow and cut round to left ear lobe.



4. Section C left – Using the length of section E as a guide, cut diagonally making vertical partings perpendicular to growth. Refine the perimeter around the ear.



5. Section C right – Comb the hair toward the face and cut at the found length making diagonal partings.

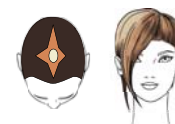


6. Section D – Pinch cut the hair to the chin. Then take vertical partings and connect the length at the vertex to the perimeter length cutting diagonally. Lighten the entire section using the Chipping Cut technique.



7. Lighten the entire proposal using the Free Hand* technique.

*A combination of Open&Close and Sliding Cut techniques.



1. Isolate a "star" on the top of the head as shown in the diagram and decolorize with **Decolor B diamond** to level 10.
2. Color the remaining hair with **Framcolor 2001 5W + 5NC** (30 g/cc + 30 g/cc).
3. Tone the center of the "star" with **Framcolor 2001 9P** and the rest with **Framcolor 2001 9E + 9TRP**.
4. Stabilize and create long lasting color with **FRAMESI COLOR METHOD Color Lock System**.

TO CREATE THIS COLOR
 YOU MAY ALSO USE:

FRAMCOLOR GLAMOUR	FRAMCOLOR ECLECTIC	FRAMCOLOR FUTURA
5.64 (60 g/cc)	5HCE (60 g/cc)	5XN (60 g/cc)
contrasts Decolor B diamond 9.62 9.46 + 9.4	contrasts Decolor B diamond 9PE 9DE + 8RDE	contrasts Decolor B diamond 10A + 8A 9D + 8R

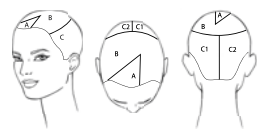
SUGGESTED PROFESSIONAL
 TREATMENT FOR SUPERIOR
 SHINE AND CONDITIONING:

Framcolor OPTICS Light Chocolate Brown (under) and **Melon Orange** (above)

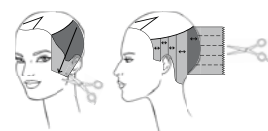
SUGGESTED HOME TREATMENT: **Morphosis COLOR PROTECT**

STYLING

Spray **Color Lover Hair Primer 11** on wet hair and apply **I.Dentity Hair.Force** for perfectly smooth results. Blow dry with little volume. Apply **I.Dentity Protect.it** and then flat iron. Finish with **BY Pearl Shiner** to add brightness and intensify the chromatic contrasts.



1. Isolate a front triangle joining the inside of the left eyebrow, the right temple and a point 1 cm (1/4") left of the vertex (section A). Trace a line from temple to temple passing 1 cm (1/4") below the crown area (sections B and C). Subdivide the section in half.



2. Section C – Take each half forwards and pinch cut from the mandible to the cheekbone. Utilizing the perimeter as a guide, comb vertical sections perpendicular to growth and point cut square.



3. Section B – Comb the entire section horizontally above the center juncture and pinch cut vertically to the length of section C.



4. Section A – Transport the hair to the left side of the face and pinch cut from the cheekbone to the chin.



5. Point cut a small fringe over the right eye to complement this proposal.



6. Refine the fringe and the entire volume with the Chipping Cut technique.



1. On both sides isolate a small rectangle (0,5 x 4 cm – 1/8" x 1 1/2") between the crown and the ear, decolorize with **Decolor B cream plus** to level 10.
2. Color the remaining hair with **Framcolor 2001 1NP** (60 g/cc).
3. Tone the isolated sections with **Framcolor 2001 11A**.
4. Stabilize and create long lasting color with **FRAMESI COLOR METHOD Color Lock System**.

TO CREATE THIS COLOR
 YOU MAY ALSO USE:

FRAMCOLOR GLAMOUR	FRAMCOLOR ECLECTIC	FRAMCOLOR FUTURA
1 (60 g/cc)	2NE (60 g/cc)	1N (60 g/cc)
contrasts Decolor B cream plus 10.62	contrasts Decolor B cream plus 9CT	contrasts Decolor B cream plus 10A

SUGGESTED PROFESSIONAL
 TREATMENT FOR SUPERIOR
 SHINE AND CONDITIONING:

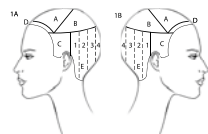
Framcolor OPTICS Creamy White

SUGGESTED HOME TREATMENT:

Morphosis SUBLIMIS OIL

STYLING

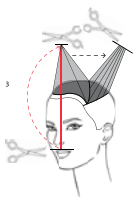
Apply **I.Dentity Look@Me** on wet hair and blow dry naturally.
 With just a hint of **I.Dentity Self.Control** wave the hair using the flat iron.
 Refine with **I.Dentity Beach Matte Spray**.



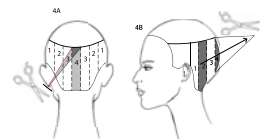
1. Isolate a 2 cm ($\frac{3}{4}$ " wide section along the front hairline (section D). Create a triangle tracing a line from end of eyebrow to end of eyebrow passing through the vertex. Isolate the remaining of the crown area (sections A and B). Isolate the side sections tracing a line from the parting to the tip of the ears (section C). Subdivide the bottom area into 7 vertical subsections (section E).



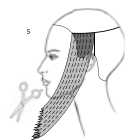
2. Section D – Comb the fringe in natural fall and point cut 2 cm ($\frac{3}{4}$ " above the eyebrows.



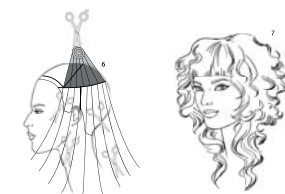
3. Section A – Create a guide at the center cutting the hair to the mouth. Comb the entire section perpendicular to the guide and pinch cut horizontally. Section B – Comb the hair perpendicular to the center juncture and pinch cut horizontally to the length at the vertex.



4. Section E – Create a guide at the center cutting the hair to the ear lobe. Now take the central subsection perpendicular to the crown line and pinch cut outwards horizontally. Transport subsections 2 to subsection 4 and pinch cut outwards horizontally. Leave subsections 3 and 1 longer to create disconnection.

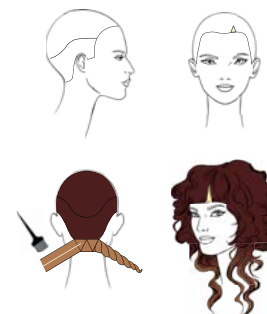
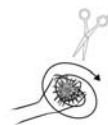


5. Sections C – Take the hair toward the face and slide cut 2 - 3 cm ($\frac{3}{4}$ " to $1\frac{1}{4}$ " beyond the chin and connecting with the back perimeter.



6. Blow dry the hair and texturize the volume at the vertex utilizing the Fiore* techniques. Lighten the remaining volume with the Open&Close technique.

*Hold a section in your fist and point cut the ends making a spiral from the outside to the inside.



1. Trace a line from the end of one eyebrow arch to the other passing 1 cm ($\frac{1}{4}$ " above the occipital bone. Above the inner part of the left eyebrow arch isolate a small triangle (0,5 cm – $\frac{1}{8}$ " wide, 1 cm – $\frac{1}{4}$ " high) and decolorize with **Decolor B diamond**.
2. In the bottom section apply **Framcolor 2001 5KR + 5MP** (40 g/cc + 20 g/cc) on the roots, then create triangular subsections.
3. Color each subsection with **Framcolor 2001 7KR** and trace a line in the center with **Decolor B diamond** using the edge of the brush. Twist each subsection delicately.
4. Color the top section with **Framcolor 2001 5KR + 5MP** (40 g/cc + 20 g/cc).
5. Stabilize and create long lasting color with **FRAMESI COLOR METHOD Color Lock System**.

TO CREATE THIS COLOR
 YOU MAY ALSO USE:

FRAMCOLOR GLAMOUR	FRAMCOLOR ECLECTIC	FRAMCOLOR FUTURA
5.46 + 5.56 (40 g/cc + 20 g/cc)	5HCE + 5ME (40 g/cc + 20 g/cc)	5XN + 5N (40 g/cc + 20 g/cc)
7.46 + 8.36 (40 g/cc + 20 g/cc)	7HCE + 7DE (40 g/cc + 20 g/cc)	7XN + 7DS (40 g/cc + 20 g/cc)
contrasts Decolor B diamond	contrasts Decolor B diamond	contrasts Decolor B diamond

SUGGESTED PROFESSIONAL
 TREATMENT FOR SUPERIOR
 SHINE AND CONDITIONING:

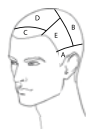
Framcolor OPTICS Creamy White and Light Honey Blonde

SUGGESTED HOME TREATMENT:

Morphosis COLOR PROTECT

STYLING

Spray **Color Lover Hair Primer 11** on wet hair and apply **BY Sparkling Mousse Flexible Hold** on the roots. Blow dry naturally. With the flat iron and **I.Dentity Protect.it** shape the lengths without making curls, but just twisting the sections alternating clockwise and counterclockwise movements. Smooth the fringe. Open the sections with your fingers and finish with **BY Black Lava Hair Spray Mega Hold**.



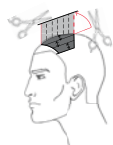
1. Trace a line from temple to temple passing 2 cm ($\frac{3}{4}$ ") below the occipital bone (section A).
 Trace a line from ear to ear passing through the center juncture (section B).
 Isolate a front section 3 cm ($1\frac{1}{4}$ ") wide between the ends of the eyebrows (section C).
 Isolate the remaining of the crown area (section D).
 Isolate the remaining side sections (section E).



2. Section A – Cut from 1 to 2 cm ($\frac{1}{4}$ " to $\frac{3}{4}$ ") using the clippers or scissor over Comb.
 Section B – Using the length in section A as a reference take radial partings perpendicular to growth and cut diagonally.
 Sections E – Proceed using the same technique but making vertical partings.



3. Section C – Create an irregular fringe above the eyebrows by slide cutting small sections.



4. Section D – Create a guide subsection at the center juncture.
 Lift the guide on its perpendicular and connect to the fringe.
 Cut the entire section perpendicularly to growth.



5. Comb the hair in natural fall, remove any excess and signature the proposal with the Chipping Cut technique.



1. Color the entire head with **Framcolor 2001 4EXN**.
2. Stabilize and create long lasting color with **FRAMESI COLOR METHOD Color Lock System**.

TO CREATE THIS COLOR
 YOU MAY ALSO USE:

FRAMCOLOR GLAMOUR

FRAMCOLOR ECLECTIC

FRAMCOLOR FUTURA

4

5-IN

4N

SUGGESTED PROFESSIONAL
 TREATMENT FOR SUPERIOR
 SHINE AND CONDITIONING:

Framcolor OPTICS Light Chocolate Brown

SUGGESTED HOME TREATMENT:

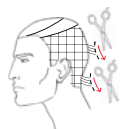
Morphosis DENSIFYING

STYLING

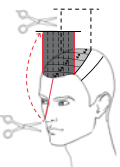
Apply **BY Frozen Glaze** on wet hair and blow dry shaping the volume as desired.
 For a trim styling finish with **I.Dentity Power-Up.Wax**.
 For an easier look use **I.Dentity Show.Wax**.



1.
At the top of the head isolate a rectangle joining the inside part of the eyebrows and the center juncture (section A).
Isolate the remainder of the crown area (sections B and C).



2.
Section C – Starting at the nape, take 2 cm ($\frac{3}{4}$ ") squares and cut each subsection from 4 to 6 cm (1½" to 2¼") using the Sliding Cut technique.



3.
Section A – Create a guide to the tip of the nose, then cut the entire section square taking horizontal partings perpendicular to growth.



4.
Section B – Cut diagonally connecting the perimeter of section C (6 cm - 2¼") to the length of section A.



5.
Texturize the proposal using the Chipping Cut and the Open&Close techniques.



1.
Color the entire head with **Framcolor Glamour 5.64**.
2.
Stabilize and create long lasting color with **FRAMESI COLOR METHOD Color Lock System**.

TO CREATE THIS COLOR
 YOU MAY ALSO USE:

FRAMCOLOR 2001

5W

FRAMCOLOR ECLECTIC

5HCE

FRAMCOLOR FUTURA

5XN

SUGGESTED PROFESSIONAL
 TREATMENT FOR SUPERIOR
 SHINE AND CONDITIONING:

Framcolor OPTICS Light Chocolate Brown and Creamy White

SUGGESTED HOME TREATMENT: **Morphosis DENSIFYING**

STYLING

Apply **I.Dentity Beach Matte Spray** and blow dry naturally. Spray the product also on dry hair to add volume and body.

spring summer collection 2014

General Management
Fabio Franchina, Patrizia Caldera

Social-Economical Analysis
C.I.M.F. Coordinamento
Informazioni di Mercato Framesi

Framesi Research Center
**Viviana Ciampitti, Francesca D'Ambrosio,
Rocco Settino, Daniele Carroli**

Medical-Scientific Aspects
Ivano Sironi

Copywriter
Patrizia Annovazzi

Trends Research
Ilaria Pizzoferrato, Paolo Lungo

Make-up
Silvia Dell'Orto

Hair Stylists Italian Style Energy
**Gianni Loda, Marcella Bifulco,
Sandra Bucalossi, Pino Di Tella,
Luigi Guerretta, Massimiliano Mattina,
Maura Mezzapelle, Davide Moro,
Monica Odorizzi, Luca Pudda,
Andrea Savegnago, Silvia Saudelli,
Giuseppe Spina, Nicola Valzania,
Gina Zambelli**

Hair Stylists Italian Style Framesi
**Tiziana Gualdi, Sabrina Arvizzigno,
Eleonora Bellani, Maria Benevieri,
Luigi Curci, Michele Curci,
Giovanni Damiani, Nicoletta Di Clemente,
Angelo Di Paola, Luca Gennari,
Carmen La Rosa, Stefano Lenzi,
Stefano Liggia, Silvio Marcandalli,
Simonetta Masiero, Mario Massaro,
Leonardo Minelli, Marina Monitillo,
Giuseppe Patti, Romano Peli,
Elena Petrini, Massimiliano Piazza,
Davide Rosatti, Massimo Sarasini,
Antonio Sciancalepore**

Special thanks to
Boyd Parris
Creative Director
Framesi North America

Margherita Chiarizia
Creative Consultant